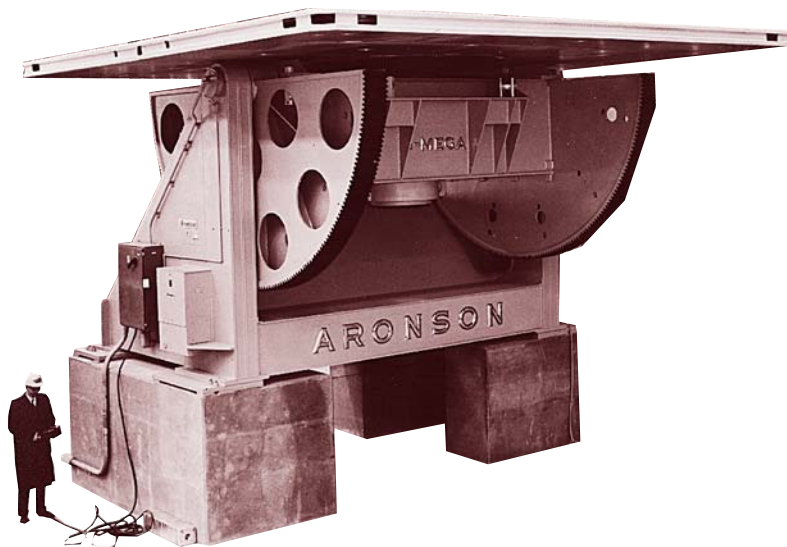
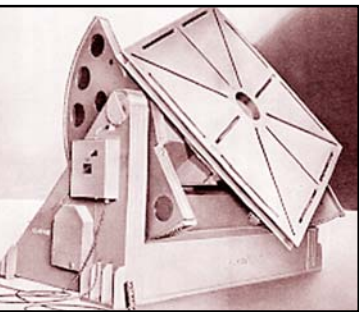


G Series

G3500 to G10,000 Type 45-90 Positioners



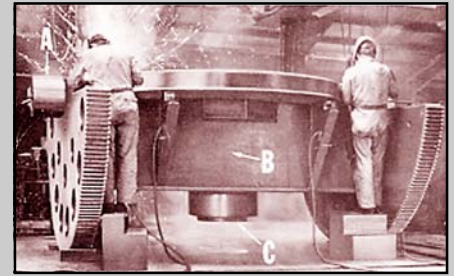
Gear Driven Positioning for Massive Structures



G3500-G10,000 are the largest standard, gear-driven positioners in the Koike Aronson lineup. These heavy-weight positioners make it both economical and practical to machine, weld and assemble massive structures. Their capacities range up to 1,000,000 pounds; however these

positioners are very compact and may be transported within the workplace. This series is capable of withstanding the stress of the heaviest industrial applications and providing many years of dependable service.

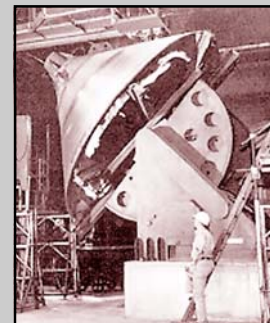
Special models with load bearing ability of greater than 1,000,000 pounds are available on request.



The trunnion subassembly. Journals (A) are in precision alignment, with an extra-rigid Trunnion Box (B), and extra large Spindles (C) carried on huge pre-loaded taper roller bearings.

Features

- Massive, precision trunnions sub-assemblies
- Heavy-duty spindles
- Preloaded taper roller bearings with lifetime lubrication
- Reinforced boxed chassis
- Adjustable limit switch triggers
- High performance SCR DC Dynamic Braking
- NEMA 12 Electricals
- Safety disconnect switch plus overload protection

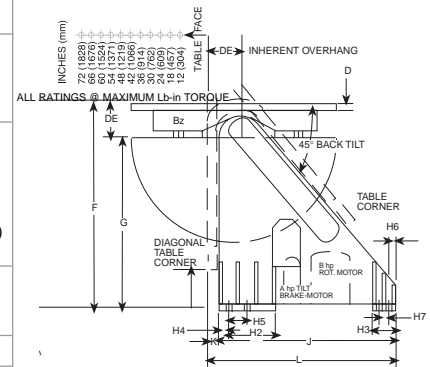
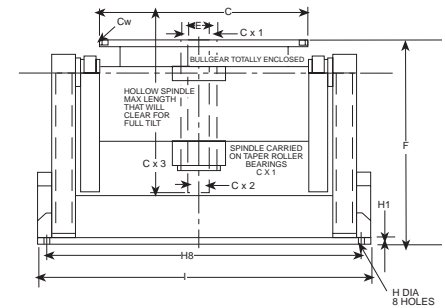


A weld cladding installation. Subjected to high temperature and weeks of continuous 24 hour operation, this positioner has given years of dependable service.

Specifications

SPECIFICATIONS	G3500	G7000	G10,000**
TILT: LOAD TORQUE, lb/in (kg/m)	9,300,000 (107,368.5)	18,600,000 (214,737)	32,000,000 (494,400)
RATING, Lbs (kg) @ 12" (304.8mm) CG Height	350,000 (158,757)	700,000 (317,515)	1,000,000 (453,592)
" " 18" (457.2mm) " " "	286,000 (129,727)	570,000 (258,548)	890,000 (403,697)
" " 24" (609.6mm) " " "	240,000 (108,862)	480,000 (217,724)	760,000 (344,730)
" " 30" (762mm) " " "	210,000 (95,254)	420,000 (190,509)	665,000 (301,639)
" " 36" (914.4mm) " " "	184,000 (83,461)	368,000 (166,922)	590,000 (267,619)
" " 42" (1066.8mm) " " "	160,000 (72,575)	320,000 (145,149)	540,000 (244,940)
" " 48" (1219.2mm) " " "	145,000 (65,771)	290,000 (131,542)	485,000 (219,992)
" " 54" (1371.6mm) " " "	135,000 (61,235)	270,000 (122,470)	440,000 (199,581)
" " 60" (1524mm) " " "	125,000 (56,699)	250,000 (113,398)	410,000 (185,973)
" " 66" (1676.4mm) " " "	115,000 (52,163)	230,000 (104,326)	380,000 (172,365)
" " 72" (1828.8mm) " " "	107,000 (48,534)	214,000 (97,069)	335,000 (151,953)
ROT: LOAD TORQUE, lb/in (kg/m)	2,640,000 (30,479.8)	5,000,000 (57,725)	5,000,000 (57,725)
RATING, lbs (kg) @ 12" (304.8mm) Eccentricity	220,000 (99,790)	416,600 (188,966)	416,600 (188,966)
TILT: 90° in How Many Seconds	300 Sec	300 Sec	500 Sec
A: Brake-Motor Horsepower	25 hp	60 hp	100 hp
ADJUSTABLE Limit Switch Triggers	Yes	Yes	Yes
ROT: Mod. A Range rpm 30:1 Variable*	None	None	None
Mod B Range rpm 60:1 Variable*	.35 - .006	.30 - .005	.30 - .005
B: HPSCR DC, Dyn Braking	40 hp	75 hp	75 hp
Mod CS Constant Speed	.35 rpm	.30 rpm	.30 rpm
B: HP CS Brake-Motor	40 hp	75 hp	75 hp
Dust-Tight NEMA 12 Electricals	Yes	Yes	Yes
Safety Disconnect Switch, Overload Protected	Yes	Yes	Yes
Magnetic Rev, Starter, Overload Protected	Yes	Yes	Yes
115v Remote Pendant with cable length of	50 ft (15.24 m)	50 ft (15.24 m)	60 ft (15.24 m)
C: TABLE Size, in (mm)	120x120 (3048x3048)	144x144 (3658x3658)	240x240 (6096x6096)
Cw: Max. Clamping Diameter, in (mm)	157 (3988)	190 (3988)	336 (3988)
Number of Slots and Width, in (mm)	(8) 2 1/8 (54)	(8) 2 1/8 (54)	(4) 3 1/8 (79.4)
Number of Slots Nuts & Thread Incl	(8) 2" - 8	(8) 2" - 8	(12) 3" - 4
D: Table Thickness, in (mm)	5 (127)	5 (127)	8 (203.2)
E: Pilot Hole Dia. & Depth, in (mm)	18.145x3 (460.9x76.2)	18.145x3 (406.9x76.2)	20.145x3 (511.7x76.2)
DE: INHERENT OVERHANG, in (mm)	14 1/2 (368.3)	13 (330.2)	18 (457.2)
Cx1: SPINDLE/Taper Roller Brg. Bore, in (mm)	20 (508)	118 (2997.2) OD	116 (2946.4) OD
Cx2: Hollow Spindle ID	14" (355.6)	Slew Ring	Slew Ring
Cx3: ID Clears This Length, in (mm)	75 (1905)	63 (1600.2)	114 (2895.6)
Guaranteed Weld Current Conduction	3000 amps	3000 amps	4000 amps
F: Height, Table Flat, in (mm)	102 1/2 (2603.5)	104 (2641.6)	156 (3962.4)
G: Height, Horiz Axis, in (mm)	88 (2235.2)	88 (2235.2)	138 (3505.2)
H: BASE, 8 Mounting Holes, in. (mm)	2 1/8 (54)	2 1/8 (54)	2 1/8 (54)
H1: Mounting Plate Thickness, in (mm)	2 (50.8)	2 (50.8)	2 (50.8)
H2: Mounting Plate, Front, in (mm)	24 (609.6)	18 (547.2)	48 (1219.2)
H3: Mounting Plate, Rear, in (mm)	12 (304.8)	18 (457.2)	24 (609.6)
H4: Mounting Hole Dimension, in (mm)	4 1/2 (114.3)	3 (76.2)	3 (76.2)
H5: Mounting Hole Dimension, in (mm)	8 (203.2)	12 (304.8)	5 (127)
H6: Mounting Hole Dimension, in (mm)	3 (76.2)	3 (76.2)	3 (76.2)
H7: Mounting Hole Dimension, in (mm)	6 (152.4)	6 (152.4)	5 (127)
H8: Mounting Hole Dimension, in (mm)	170 (4318)	222 (5638.8)	218 (5537.2)
I: BASE, Width Overall, in (mm)	176 (4470.4)	228 (5791.2)	223 (5664.2)
J: BASE, Length Overall, in (mm)	102 (2590.8)	97 (2463.8)	144 (3657.6)
K: Table Face Overhang, in (mm)	6 (152.4)	6 (152.4)	9 (228.6)
L: Length Overall, in (mm)	108 (2743.2)	103 (2616.2)	153 (3886.2)
Standard Primary Voltage	460/3/60	460/3/60	460/3/60
SHIPPING WEIGHT, lbs (kg)	47,500 (21,546)	81,000 (36,741)	170,000 (77,111)

* See Catalog Specification Sheets for optional speeds & accessories.
 ** For models of greater than 1 million pounds capacity, please consult factory.
 Models and Specifications subject to change without notice



Main Office:
 635 W. Main St., Arcade, New York 14009
 Phone (716) 492-2400
 Fax (716) 457-3517 (716) 492-5209

Southern Regional Office:
 1285 North Post Oak, Suite 150, Houston, TX 77055
 Phone (713) 682-9645
 Fax (713) 957-4852

Web Site Address:
www.koike.com

Sold By: