

G Series

G400 to G2200 Portable Type 45-90 Positioners



Largest Capacity with Powered Tilt

The G400-G2000 positioners are a versatile series with capacities ranging from 40,000 to 220,000 pounds. Design characteristics of these positioners include powered tilt from 90° forward to 45° backward, fixed height bases, and hollow spindles.



The portable G400-G2200 Positioners can be configured to meet your precise requirements for capacity and clearance.

Features

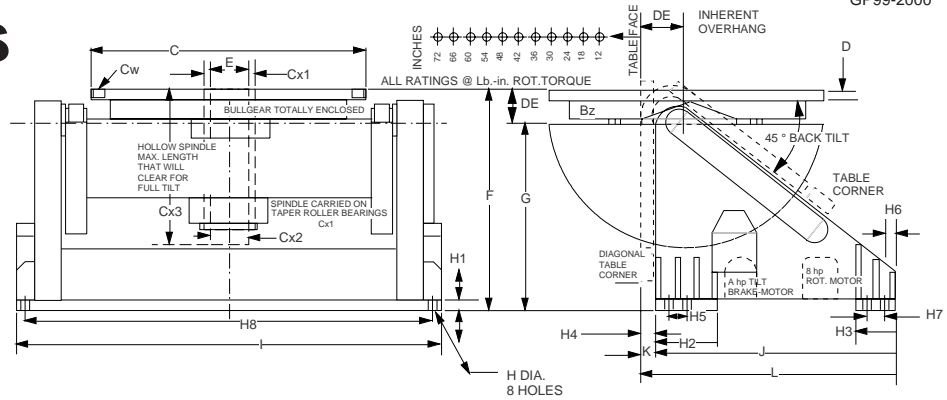
- Fully enclosed bullgear
- Reinforced box-beam trunnion
- Self-locking wormgear drive box is weld-mounted to trunnion
- Sturdy spindles with preloaded, taper roller bearings have lifetime lubrication
- Worm-driveshaft is protected by placement within trunnion journal
- Precision braking of table rotation
- Brake-motor mounted within chassis
- 90,000 PSI, aluminum-bronze heat-treated, self-locking wormgears
- Adjustable tilt stops with limit switches
- Tightly sealed NEMA 12 control cabinet with safety disconnect handle
- 11" (280mm) thick, double-wall, sideplate
- Double tilt-sector gears for even load distribution
- Trunnion bearings are mounted within sideplates; not merely bolted on



KOIKE ARONSON, INC.

P.O. Box 307, Arcade, New York 14009
Phone (585) 492-2400 FAX (585) 457-3517

Specifications



SPECIFICATIONS	G400	G500	G600	G700	G850	G1200	G2200
TILT: LOAD TORQUE, Lb/In (kg/m)	840,000 (9698)	1,050,000 (12,122)	1,260,000 (14,547)	1,470,000 (16,971)	1,800,000 (20,781)	2,880,000 (33,250)	5,400,000 (62,343)
RATING, Lbs (kg) @ 12" (304.8mm) CG Height	40,000 (18,144)	50,000 (22,680)	60,000 (27,215)	70,000 (31,751)	85,000 (38,555)	120,000 (54,431)	220,000 (99,790)
" " 18" (457.2mm) " "	31,000 (14,061)	39,000 (17,690)	46,500 (21,092)	54,500 (24,721)	66,600 (30,209)	96,000 (43,545)	177,000 (80,286)
" " 24" (609.6mm) " "	25,000 (11,340)	32,000 (14,515)	38,000 (17,236)	44,500 (20,185)	54,500 (24,721)	80,000 (36,287)	148,000 (67,132)
" " 30" (762mm) " "	21,500 (9752)	27,000 (12,247)	32,000 (14,515)	37,500 (17,010)	48,000 (21,772)	68,600 (31,116)	127,000 (57,606)
" " 36" (914.4mm) " "	18,500 (8391)	23,400 (10,614)	28,000 (12,700)	32,500 (14,742)	42,000 (19,051)	60,000 (27,215)	111,000 (50,349)
" " 42" (1066.8mm) " "	16,400 (7439)	20,600 (9344)	24,500 (11,113)	28,000 (12,927)	37,000 (16,783)	53,400 (24,222)	100,000 (45,359)
" " 48" (1219.2mm) " "	14,600 (6622)	18,500 (8391)	22,000 (9979)	25,500 (11,567)	32,000 (14,515)	48,000 (21,772)	89,000 (40,370)
" " 54" (1371.6mm) " "	13,200 (5987)	16,700 (7575)	20,000 (9079)	23,000 (10,433)	29,000 (13,154)	43,600 (19,777)	81,000 (36,741)
" " 60" (1524mm) " "	12,000 (5443)	15,200 (6895)	18,000 (8165)	21,000 (9525)	26,000 (11,793)	40,000 (18,144)	74,000 (33,566)
" " 66" (1676.4mm) " "	11,000 (4989)	14,000 (6350)	16,500 (7484)	19,500 (8845)	24,000 (10,886)	37,000 (16,783)	69,000 (31,298)
" " 72" (1828.8mm) " "	10,200 (4627)	13,000 (5897)	15,500 (7031)	18,000 (8165)	22,000 (9979)	34,200 (15,513)	64,000 (29,030)
ROT: LOAD TORQUE, Lb/In (kg/m)	480,000 (5542)	600,000 (6927)	720,000 (8312)	840,000 (9698)	1,020,000 (11,776)	1,440,000 (16,625)	2,640,000 (30,479)
RATING, Lbs (kg) @ 12" (304.8mm) Eccentricity	40,000 (99,790)	50,000 (22,680)	60,000 (27,215)	70,000 (31,751)	85,000 (38,555)	120,000 (54,431)	220,000 (99,790)
TILT: 90° in How Many Seconds	64 Sec	73 Sec	83 Sec	94 Sec	104 Sec	104 Sec	150 Sec
A: Brake-Motor Horsepower	10 hp	10 hp	10 hp	10 hp	15 hp	25 hp	25 hp
ADJUSTABLE Limit Switch Triggers	Yes	Yes	Yes	Yes	Yes	Yes	Yes
ROT: Mod. A Range rpm 30:1 Variable*	.50-.016	None	None	None	None	None	None
Mod. B Range rpm 60:1 Variable*	.50-.008	.50-.008	.40-.007	.53-.009	.40-.007	.40-.007	.35-.006
B: HP/SC DC, Dyn Braking	7 1/2 hp	10 hp	10 hp	15 hp	15 hp	20 hp	30 hp
Mod CS Constant Speed	.35 rpm	.30 rpm	.30 rpm	.53 rpm	.40 rpm	.40 rpm	.35 rpm
B: HP CS Brake-Motor	7 1/2 hp	10 hp	15 hp	15 hp	15 hp	20 hp	30 hp
Dust-Tight NEMA 12 Electricals	Yes	Yes	Yes	Yes	Yes	Yes	Yes
Safety Disconnect Switch, Overload Protected	Yes	Yes	Yes	Yes	Yes	Yes	Yes
Magnetic Rev. Starter, Overload Protected	Yes	Yes	Yes	Yes	Yes	Yes	Yes
115v Remote Pendant with cable length of	30 ft (9.14 m)	30 ft (9.14 m)	30 ft (9.14 m)	30 ft (9.14 m)	40 ft (12.2 m)	40 ft (12.2 m)	50 ft (15.24 m)
C: TABLE Size, In	84 x 84	84 x 84	96 x 96	96 x 96	96 x 96	120 x 120	120 x 120
Table Size, (mm)	(2134 x 2134)	(2134 x 2134)	(2438 x 2438)	(2438 x 2438)	(2438 x 2438)	(3048 x 3048)	(3048 x 3048)
Cw: Max. Clamping Diameter, In (mm)	113 (2870)	113 (2870)	126 (3200)	126 (3200)	126 (3200)	160 (4064)	157 (3988)
Number of Slots and Width, In (mm)	(4) 1 5/16 (33.3)	(4) 1 5/16 (33.3)	(8) 1 5/8 (41.3)	(8) 1 5/8 (41.3)	(8) 1 5/8 (41.3)	(8) 1 7/8 (47.6)	(8) 2 1/8 (56)
Number of Slots Nuts & Thread Incl	(4) 1 1/4"-7	(4) 1 1/4"-7	(8) 1 1/2"-12	(8) 1 1/2"-12	(8) 1 1/2"-12	(8) 1 1/2"-12	(8) 1 1/2"-12
D: Table Thickness, In (mm)	2 3/4 (69.8)	2 3/4 (69.8)	3 (76.2)	3 (76.2)	3 (76.2)	5 (127)	5 (127)
E: Pilot Hole Dia. & Depth, In	12.300 x 1 1/4	12.300 x 1 1/4	12.300 x 1 1/4	12.300 x 1 1/4	12.255 x 1	18.200 x 3	18.125 x 3
Pilot Hole Dia. & Depth, (mm)	(312.4 x 31.7)	(312.4 x 31.7)	(312.4 x 31.7)	(312.4 x 31.7)	(311.3 x 25.4)	(462.3 x 76.2)	(460.4 x 76.2)
DE: INHERENT OVERHANG, In (mm)	8 3/4 (222.2)	8 3/4 (222.2)	9 (228.6)	9 (228.6)	9 (228.6)	12 (304.8)	12 1/2 (317.5)
Cx1: SPINDLE/Taper Roller Brg. Bore, In (mm)	14 (355.6)	14 (355.6)	14 (355.6)	14 (355.6)	14 (355.6)	14 (355.6)	14 (355.6)
Cx2: Hollow Spindle ID	12 (304.8)	12 (304.8)	12 (304.8)	12 (304.8)	12 1/8 (308)	12 (304.8)	18 (457.2)
Cx3: ID Clears This Length, In (mm)	30 (762)	30 (762)	30 (762)	30 (762)	45 (1143)	45 (1143)	63 (1600.2)
Guaranteed Weld Current Conduction	3000 amps	3000 amps	3000 amps	3000 amps	3000 amps	3000 amps	3000 amps
F: Height, Table Flat, In (mm)	81 (2057.4)	81 (2057.4)	81 (2057.4)	81 (2057.4)	94 (2387.6)	100 (2540)	102 1/2 (2552.7)
G: Height, Horiz Axis, In (mm)	72 (1828.8)	72 (1828.8)	72 (1828.8)	72 (1828.8)	85 (2159)	88 (2235.2)	88 (2235.2)
H: BASE, 8 Mounting Holes, In (mm)	2 1/8 (54)	2 1/8 (54)	2 1/8 (54)	2 1/8 (54)	2 1/8 (54)	2 1/8 (54)	2 1/8 (54)
H1: Mounting Plate Thickness, In (mm)	1 (25.4)	1 (25.4)	1 (25.4)	1 (25.4)	1 (25.4)	1 (25.4)	1 1/2 (38.1)
H2: Mounting Plate, Front, In (mm)	12 (304.8)	12 (304.8)	12 (304.8)	12 (304.8)	12 (304.8)	12 (304.8)	12 (304.8)
H3: Mounting Plate, Rear, In (mm)	12 (304.8)	12 (304.8)	12 (304.8)	12 (304.8)	12 (304.8)	12 (304.8)	12 (304.8)
H4: Mounting Hole Dimension, In (mm)	3 (76.2)	3 (76.2)	3 (76.2)	3 (76.2)	3 (76.2)	3 (76.2)	3 (76.2)
H5: Mounting Hole Dimension, In (mm)	6 (152.4)	6 (152.4)	6 (152.4)	6 (152.4)	6 (152.4)	6 (152.4)	6 (152.4)
H6: Mounting Hole Dimension, In (mm)	3 (76.2)	3 (76.2)	3 (76.2)	3 (76.2)	3 (76.2)	3 (76.2)	3 (76.2)
H7: Mounting Hole Dimension, In (mm)	6 (152.4)	6 (152.4)	6 (152.4)	6 (152.4)	6 (152.4)	6 (152.4)	6 (152.4)
H8: Mounting Hole Dimension, In (mm)	108 3/4 (2762.2)	108 3/4 (2762.2)	111 3/4 (2838.4)	111 3/4 (2838.4)	140 1/2 (3568.7)	144 1/2 (3670.3)	166 1/2 (4229.1)
I: BASE, Width Overall, In (mm)	114 3/4 (2914.6)	114 3/4 (2914.6)	117 3/4 (2990.8)	117 3/4 (2990.8)	146 1/2 (3721.1)	150 1/2 (3822.7)	172 1/2 (4381.5)
J: BASE, Length Overall, In (mm)	72 (1828.8)	72 (1828.8)	72 (1828.8)	72 (1828.8)	92 (2336.8)	96 (2438.4)	96 (2438.4)
K: Table Face Overhang, In (mm)	4 (101.6)	4 (101.6)	4 (101.6)	4 (101.6)	4 (101.6)	6 (152.4)	6 (152.4)
L: Length Overall, In (mm)	76 (1930.4)	76 (1930.4)	76 (1930.4)	76 (1930.4)	96 (2438.4)	102 (2590.8)	102 (2590.8)
Standard Primary Voltage	460/3/60	460/3/60	460/3/60	460/3/60	460/3/60	460/3/60	460/3/60
SHIPPING WEIGHT, Lbs (kg)	15,500 (7030.7)	15,700 (7121)	17,000 (7711)	17,200 (7801.8)	24,000 (10,886.2)	30,000 (13,607.7)	38,000 (17,236.5)

* See Catalog Specification Sheets for optional speeds & accessories.
 ** For models of greater than 1 million pounds capacity, please consult factory.
 Models and Specifications subject to change without notice.



KOIKE ARONSON, INC.

Web Site Address: www.koike.com

Main Office:

635 W. Main St., Arcade, New York 14009
 Phone (585) 492-2400
 Fax (585) 457-3517 (585) 492-5209

Southern Regional Office:

1285 North Post Oak, Suite 150, Houston, TX 77055
 Phone (713) 682-9645
 Fax (713) 957-4852

Sold By: