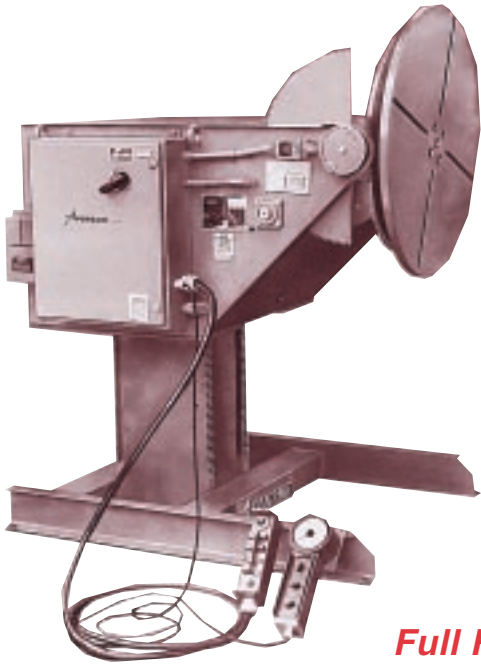


# GE Series

## Geared Elevation Positioners

GE25, GE30-6, GE30, GE45



**Full Featured Operation  
for Smaller Applications**



The Koike Aronson GE25 to GE45 series of Geared Elevation Positioners are designed for lighter weight applications and portability.

These Geared Elevation Positioners allow work to be performed at the lowest possible level which makes welding both faster and safer. Along with precision elevation control, these positioners enable simultaneous table tilt and rotation. Operators may easily access any section of weldment, eliminating the need for awkward ladders and platforms.

All Koike Aronson Geared Elevation positioners are engineered for safety, precision, performance, and unsurpassed durability.



*Model GE45 offers 4,500 pound capacity with 33" of powered elevation.*

### Features

- Capacities from 2,500 to 4,500 pounds
- 130,000 psi yield alloy steel lift pinion integral with axleshaft
- Aluminum-Bronze guide rollers
- Journals where self-aligning roller bearings are mounted
- Aluminum-bronze self-locking wormgear
- Lift pinions lock in unison with transfer gears in lighter models
- No obstructions to limit workpiece diameter
- Level, sturdy chassis with sturdy post construction



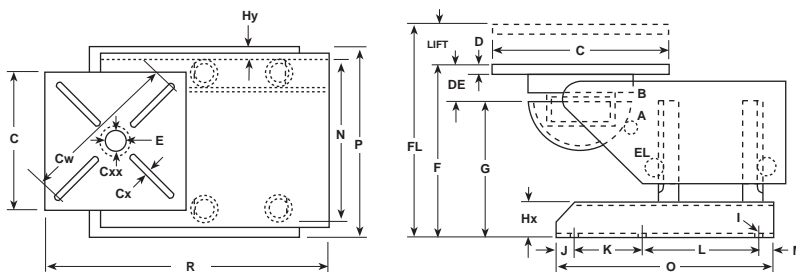
*The GE30 allows the operator to raise, lower, or tilt the workpiece at anytime for convenient floor level welding.*



## KOIKE ARONSON, INC.

P.O. Box 307, Arcade, New York 14009  
Phone (585) 492-2400 FAX (585) 457-3517

# Specifications



SPECIFICATIONS	GE25	GE30-6	GE30	GE45
<b>TILT:</b> LOAD TORQUE, Lb/In (kg/m)	27,500 (317)	38,250 (441)	60,750 (701)	91,125 (1052)
RATING, Lbs (kg) @ 4" (102mm) CG Height	2,500 (1134)	3,000 (1361)	4,300 (1950)	—
" " " 6" (152mm) CG Height	2,500 (1134)	3,000 (1361)	4,300 (1950)	—
" " " 12" (305mm) CG Height	1,600 (726)	2,000 (907)	3,000 (1361)	4,500 (2041)
" " " 18" (457mm) " "	1,200 (544)	1,500 (680)	2,500 (1043)	3,500 (1587)
" " " 24" (610mm) " "	950 (431)	1,200 (544)	1,880 (853)	2,800 (1270)
" " " 30" (762mm) " "	780 (354)	1,000 (453)	1,600 (726)	2,400 (1089)
" " " 36" (914mm) " "	670 (304)	900 (408)	1,375 (624)	2,050 (930)
" " " 42" (1067mm) " "	580 (263)	800 (363)	1,200 (544)	1,800 (816)
" " " 48" (1219mm) " "	520 (236)	700 (317)	1,075 (488)	1,600 (726)
" " " 54" (1372mm) " "	460 (209)	620 (281)	975 (442)	1,450 (658)
" " " 60" (1524mm) " "	420 (190)	570 (258)	890 (404)	1,300 (590)
" " " 66" (1676mm) " "	380 (172)	520 (236)	820 (372)	1,200 (544)
" " " 72" (1829mm) " "	350 (159)	480 (218)	750 (340)	1,100 (499)
<b>ROT:</b> LOAD TORQUE, Lb/In (kg/m)	15,000 (173)	18,000 (208)	36,000 (416)	54,000 (623)
RATING, Lbs (kg) @ 4" (102mm) Eccentricity	2,500 (1134)	3,000 (1361)	4,300 (1950)	—
RATING, Lbs (kg) @ 6" (152mm) Eccentricity	2,500 (1134)	3,000 (1361)	4,300 (1950)	—
RATING, Lbs (kg) @ 12" (305mm) Eccentricity	1,250 (567)	2,000 (907)	3,000 (1361)	4,500 (2041)
<b>TILT:</b> 135° in How Many Seconds	19	23	25	25
A: Brake-Motor Horsepower	1 hp	1 hp	1 1/2 hp	2 hp
ADJUSTABLE Limit Switch Triggers	Yes	Yes	Yes	Yes
<b>ROT:</b> Mod. A Range rpm 30:1 Variable*	2.0 - .07	2.0 - .07	1.2 - .04	1.2 - .04
Mod. B Range rpm 60:1 Variable*	2.0 - .03	2.0 - .03	1.2 - .02	1.2 - .02
B: HP SCR DC, Dyn Braking	3/4 hp	1 hp	1 hp	1 1/2 hp
Mod CS Constant Speed	2.2 rpm	2.2 rpm	2.2 rpm	2.0 rpm
B: HP CS Brake-Motor	3/4 hp	1 hp	2 hp	3 hp
ELEV: LIFT at Constant Speed	34 IPM	34 IPM	30 IPM	30 IPM
EL: Brake-Motor Horsepower	1 hp	1 hp	2 hp	3 hp
Dust-Tight NEMA 12 Electricals	Yes	Yes	Yes	Yes
Safety Disconnect Switch, Overload Protected	Yes	Yes	Yes	Yes
Magnetic Rev, Starter, Overload Protected	Yes	Yes	Yes	Yes
115v Remote Pendant with cable length of	12 ft (3.6m)	12 ft (3.6m)	12 ft (3.6m)	12 ft (3.6m)
C: TABLE Size, In (mm)	36" Dia (914mm)	36" Dia (914mm)	36 x 36 (914 x 914)	42 x 42 (1067 x 1067)
Cw: Max. Clamping Diameter, In (mm)	34 (864)	34 (864)	47 (1194)	56 (1422)
Cx: Number of Slots and Width, In (mm)	(4) 25/32" (20mm)	(4) 25/32" (20mm)	(4) 13/16" (21mm)	(4) 13/16" (21mm)
Number of Slots Nuts & Thread Incl	None	None	(4) 3/4"- 10	(4) 3/4"- 10
D: Table Thickness, In (mm)	1 (25)	1 (25)	1 3/4 (44)	1 3/4 (44)
E: Pilot Hole Dia. & Depth, In (mm)	1 1/2 (38)	1 1/2 (38)	9.126 x 1 1/4 (232x32)	9.126 x 1 1/4 (232x32)
DE: INHERENT OVERHANG, In (mm)	5 (127)	5 (127)	8 1/4 (209)	8 1/4 (209)
SPINDLE/Taper Roller Brg. Bore, In (mm)	2 3/8 (60)	2 3/8 (60)	10 (254)	10 (254)
Cxx: Hollow Spindle ID, In (mm)	1 1/2 (38)	1 1/2 (38)	9 (229)	9 (229)
Guaranteed Weld Current Conduction	500 amps	1500 amps	2000 amps	2000 amps
F: Table Flat Height Minimum, In (mm)	35 (889)	35 (889)	52 3/4 (1340)	52 3/4 (1340)
LIFT: Total Lift Amount, In (mm)	24 (610)	24 (610)	33 (838)	33 (838)
FL: Table Flat Height Maximum, In (mm)	59 (1499)	59 (1499)	85 3/4 (2178)	85 3/4 (2178)
G: Horiz. Axis Height Minimum, In (mm)	30 (762)	30 (762)	44 1/2 (1130)	44 1/2 (1130)
Horiz. Axis Height Maximum, In (mm)	54 (1372)	54 (1372)	77 1/2 (1968)	77 1/2 (1968)
Hx x Hy: Base Leg Depth and Width, In (mm)	6 x 2 (152 x 51)	6 x 2 (152 x 51)	6 x 4 (152 x 102)	6 x 4 (152 x 102)
I: BASE Mounting Holes, In (mm)	(2) 13/16 (21mm)	(2) 13/16 (21mm)	(4) 13/16 (21mm)	(4) 13/16 (21mm)
J: Front Mounting Hole Location, In (mm)	None	None	3 (76)	3 (76)
K: Center to Rear Mounting Hole, In (mm)	None	None	None	None
L: Center to Front Mounting Hole, In (mm)	None	None	73 (1854)	73 (1854)
M: Rear Mounting Hole Location, In (mm)	1 (25)	1 (25)	3 (76)	3 (76)
N: Traverse Center Distance, In (mm)	41 1/2 (1054)	41 1/2 (1054)	46 (1168)	46 (1168)
O: BASE Length Overall, In (mm)	55 (1397)	55 (1397)	79 (2007)	79 (2007)
P: BASE Width Overall, In (mm)	43 (1092)	43 (1092)	50 (1270)	50 (1270)
R: MODEL Length Overall, In (mm)	68 1/2 (1740)	68 1/2 (1740)	89 1/2 (2273)	92 1/2 (2349)
Standard Primary Voltage:	230/460v	230/460v	230/460v	230/460v
SHIPPING WEIGHT	2400 (1089)	2450 (1111)	5400 (2449)	5700 (2585)

\*See Catalog Specification Sheets for optional speeds and accessories. Models and Specifications subject to change without notice.



## KOIKE ARONSON, INC.

Web Site Address: [www.koike.com](http://www.koike.com)

**Main Office:**

635 W. Main St., Arcade, New York 14009  
 Phone (585) 492-2400  
 Fax (585) 457-3517 (585) 492-5209

**Southern Regional Office:**

1285 North Post Oak, Suite 150, Houston, TX 77055  
 Phone (713) 682-9645  
 Fax (713) 957-4852

**Sold By:**