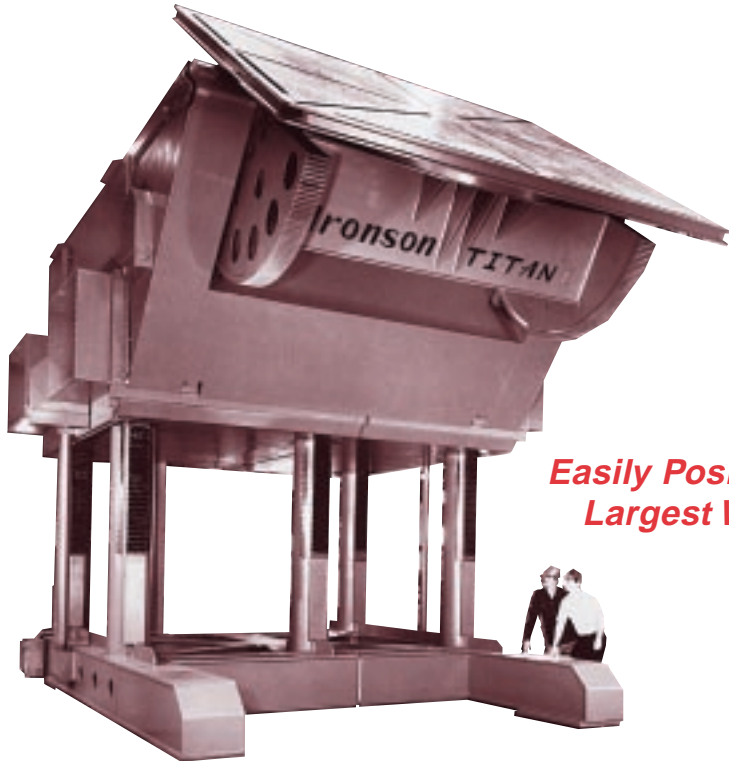


# GE Series

## Geared Elevation Positioners

GE500, GE850, GE1200, GE3500



*Easily Positions your  
Largest Weldments*

The GE500 to GE3500 offer the largest capacities and range of elevations in the line of Koike Aronson positioners.

These positioners allow work to be performed at the lowest possible level which makes welding both faster and safer. Along with precision elevation control, they enable simultaneous table tilt and rotation. Operators may easily access any section of weldment, eliminating the need for awkward ladders and platforms.

All Koike Aronson Geared Elevation positioners are engineered for safety, precision, performance, and unsurpassed durability.



*Model 1200 provides 120,000 pounds of powered elevation*

### Features

- Capacities from 50,000 to 350,000 pounds
- Multiple post geared elevation with rack teeth in posts and pinions are carried on bearings in chassis side plates assure rigidity and safety
- Size 850 and up have 8 radial slots and edge slots; 4 slots on sizes under 850
- Lift pinions run in unison, therefore any failure will halt entire assembly



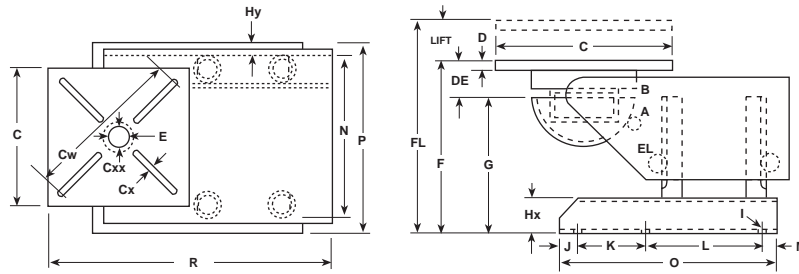
*Floor level welding at capacities up to 350,000 pounds is easily achieved with Koike Aronson's Geared Elevation*



## KOIKE ARONSON, INC.

P.O. Box 307, Arcade, New York 14009  
Phone (585) 492-2400 FAX (585) 457-3517

# Specifications



SPECIFICATIONS	GE500	GE850	GE1200	GE3500
<b>TILT: LOAD TORQUE, Lb/In (kg/m)</b>	1,050,000 (12,122)	1,800,000 (20,781)	2,880,000 (33,250)	9,300,000 (107,368)
<b>RATING, Lbs (kg) @ 12" (305mm) CG Height</b>	50,000 (22,680)	85,000 (38,555)	120,000 (54,431)	350,000 (158,757)
" " " 18" (457mm) " " "	39,000 (17,690)	66,600 (30,209)	96,000 (43,545)	286,000 (129,727)
" " " 24" (610mm) " " "	32,000 (14,515)	54,500 (24,721)	80,000 (36,287)	240,000 (108,862)
" " " 30" (762mm) " " "	27,000 (12,247)	48,000 (21,772)	68,600 (31,116)	210,000 (95,254)
" " " 36" (914mm) " " "	23,400 (10,614)	42,000 (19,051)	60,000 (27,215)	184,000 (83,461)
" " " 42" (1067mm) " " "	20,600 (9,344)	37,000 (16,783)	53,400 (24,222)	160,000 (72,575)
" " " 48" (1219mm) " " "	18,500 (8,391)	32,000 (14,515)	48,000 (21,772)	145,000 (65,771)
" " " 54" (1372mm) " " "	16,700 (7,575)	29,000 (13,154)	43,600 (19,777)	135,000 (61,235)
" " " 60" (1524mm) " " "	15,200 (6,895)	26,000 (11,793)	40,000 (18,144)	125,000 (56,699)
" " " 66" (1676mm) " " "	14,000 (6,350)	24,000 (10,886)	37,000 (16,783)	115,000 (52,163)
" " " 72" (1829mm) " " "	13,000 (5,896)	22,000 (9,979)	34,200 (15,513)	107,000 (48,534)
<b>ROT: LOAD TORQUE, Lb/In (kg/m)</b>	600,000 (6,927)	1,020,000 (11,776)	1,440,000 (16,625)	2,640,000 (30,479)
<b>RATING, Lbs @ 12" (305mm) Eccentricity</b>	50,000 (22,680)	85,000 (38,555)	120,000 (54,431)	220,000 (99,790)
<b>TILT: 135' in How Many Seconds</b>	67 Sec	117 Sec	156 Sec	300 Sec
<b>A: Brake - Motor Horsepower</b>	15 hp	15 hp	25 hp	25 hp
<b>ADJUSTABLE Limit Switch Triggers</b>	Yes	Yes	Yes	Yes
<b>ROT: Mod, A Range rpm 30:1 Variable*</b>	None	None	None	None
<b>Mod, B Range rpm 60:1 Variable*</b>	.50-.008	.40-.007	.40-.007	.35-.006
<b>B: HP SCR DC, Dyn Braking</b>	15 hp	15 hp	20 hp	40 hp
<b>Mod, CS Constant Speed</b>	.50 rpm	.40 rpm	.40 rpm	.35 rpm
<b>B: HP CS Brake-Motor</b>	15 hp	15 hp	20 hp	40 hp
<b>ELEV: LIFT at Constant Speed, IPM (mm/min)</b>	20 (508)	20 (508)	15 (381)	10 (254)
<b>EL: Brake-Motor Horsepower</b>	20 hp	25 hp	40 hp	150 hp
<b>Dust-Tight NEMA 12 Electricals</b>	Yes	Yes	Yes	Yes
<b>Safety Disconnect Switch, Overload Protected</b>	Yes	Yes	Yes	Yes
<b>Magnetic Rev. Starter, Overload Protected</b>	Yes	Yes	Yes	Yes
<b>115v Remote Pendant with cable length of</b>	30 ft (9.1m)	40 ft (12.2m)	40 ft (12.2m)	50 ft (15.2m)
<b>C: TABLE Size, In (mm)</b>	84 x 84 (2134x2134)	96 x 96 (2438x2438)	120 x 120 (3048x3048)	168 x 168 (4267x4267)
<b>Cw: Max. Clamping Diameter, In (mm)</b>	112 (2845)	128 (3251)	159 (4039)	224 (5690)
<b>Cx: Number of Slots and Width, In (mm)</b>	(4) 1 <sup>5</sup> / <sub>16</sub> (33)	(8) 1 <sup>5</sup> / <sub>8</sub> (41)	(8) 1 <sup>7</sup> / <sub>8</sub> (48)	(8) 2 <sup>1</sup> / <sub>8</sub> (54)
<b>Number of Slots Nuts &amp; Thread Incl</b>	(4) 1 <sup>1</sup> / <sub>4</sub> "-7	(8) 1 <sup>1</sup> / <sub>2</sub> "-12	(8) 1 <sup>3</sup> / <sub>4</sub> "-12	(16) 2"- 8
<b>D: Table Thickness, In (mm)</b>	2 3/4 (70)	3 (76)	5 (127)	5 1/2 (140)
<b>E: Pilot Hole Dia. and Depth, In (mm)</b>	12.253 x 1 <sup>13</sup> / <sub>16</sub> (311x46)	12.255 x 1 <sup>3</sup> / <sub>8</sub> (311x35)	18.200 x 3 <sup>3</sup> / <sub>4</sub> (462x95)	18.145 x 3 (461x76)
<b>DE: INHERENT OVERHANG, In (mm)</b>	8 <sup>3</sup> / <sub>4</sub> (222)	9 (229)	12 (305)	14 <sup>1</sup> / <sub>2</sub> (368)
<b>SPINDLE OD/Taper Roller Brg. Bore</b>	14 (356)	14 (356)	14 & 20 (356 & 508)	100 OD (2540)-
<b>Cxx: Hollow Spindle ID, In (mm)</b>	12 <sup>1</sup> / <sub>8</sub> (308)	12 1/8 (308)	12 1/8 (308)	Slew Ring
<b>Guaranteed Weld Current Conduction</b>	3000 amps	3000 amps	3000 amps	3000 amps
<b>F: Table Flat Height Minimum, In (mm)</b>	59 1/2 (1,511)	82 (2,083)	98 (2,489)	144 (3,658)
<b>LIFT: Total Lift Amount, In (mm)</b>	33 (838)	54 (1,372)	54 (1,372)	92 (2,337)
<b>FL: Table Flat Height Maximum, In (mm)</b>	92 <sup>1</sup> / <sub>2</sub> (2,349)	136 (3,454)	152 (3,861)	236 (5,994)
<b>G: Horiz. Axis Height Minimum, In (mm)</b>	50 <sup>3</sup> / <sub>4</sub> (1289)	73 (1854)	86 (2184)	129 <sup>1</sup> / <sub>2</sub> (3289)
<b>Horiz. Axis Height Maximum, In (mm)</b>	83 <sup>3</sup> / <sub>4</sub> (2127)	127 (3226)	140 (3556)	221 <sup>1</sup> / <sub>2</sub> (5626)
<b>Hx x Hy: Base Leg Depth and Width, In (mm)</b>	13 x 7 (330 x 178)	13 x 12 (330 x 305)	13 x 12 (330 x 305)	23 x 20 (584 x 508)
<b>I: BASE Mounting Holes, In (mm)</b>	(4) 1 <sup>1</sup> / <sub>16</sub> (1)	None	None	None
<b>J: Front Mounting Hole Location, In (mm)</b>	2 <sup>3</sup> / <sub>4</sub> (70)	None	None	None
<b>K: Center Mounting Hole Location, In (mm)</b>	None	None	None	None
<b>L: Center to Rear Mounting Hole, In (mm)</b>	None	None	None	None
<b>M: Rear Mounting Hole Location, In (mm)</b>	1 <sup>3</sup> / <sub>4</sub> (44)	None	None	None
<b>N: Traverse Center Distance, In (mm)</b>	98 <sup>1</sup> / <sub>2</sub> (2502)	None	None	None
<b>O: BASE Length Overall, In (mm)</b>	94 (2388)	148 <sup>3</sup> / <sub>4</sub> (3778)	148 <sup>3</sup> / <sub>4</sub> (3778)	297 (7544)
<b>P: BASE Width Overall, In (mm)</b>	106 <sup>1</sup> / <sub>2</sub> (2705)	137 <sup>1</sup> / <sub>2</sub> (3492)	141 <sup>1</sup> / <sub>2</sub> (3594)	184 (4674)
<b>R: MODEL Length Overall, In (mm)</b>	134 <sup>3</sup> / <sub>4</sub> (3423)	196 <sup>3</sup> / <sub>4</sub> (4997)	209 (5309)	363 (9220)
<b>Standard Primary Voltage:</b>	460v	460v	460v	460v
<b>SHIPPING WEIGHT, Lbs (kg)</b>	21,000 (9525)	41,000 (18,597)	53,000 (24,040)	234,000 (106,141)

\*See Catalog Specification Sheets for optional speeds and accessories Models and Specifications subject to change without notice



## KOIKE ARONSON, INC.

Web Site Address: [www.koike.com](http://www.koike.com)

**Main Office:**

635 W. Main St., Arcade, New York 14009  
 Phone (585) 492-2400  
 Fax (585) 457-3517 (585) 492-5209

**Southern Regional Office:**

1285 North Post Oak, Suite 150, Houston, TX 77055  
 Phone (713) 682-9645  
 Fax (713) 957-4852

**Sold By:**