

GE Series

Geared Elevation Positioners

GE60, GE90, GE120, GE180, GE250

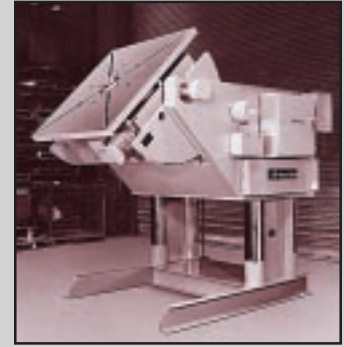
Large Capacity Positioning in a Compact Size



The GE60 to GE250 Models are Koike Aronson's midrange lineup and are the most popular series with their large capacities and compact sizes.

Geared Elevation Positioners allow work to be performed at the lowest possible level which makes welding both faster and safer. Along with precision elevation control, these positioners enable simultaneous table tilt and rotation. Operators may easily access any section of weldment, eliminating the need for awkward ladders and platforms.

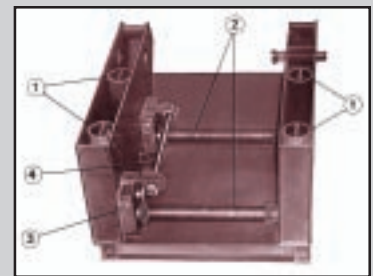
All Koike Aronson Geared Elevation positioners are engineered for safety, precision, performance, and unsurpassed durability.



Model GE120 with 12,000 lb. capacity. Shown equipped with optional mounts for compatibility with programmable controls.

Features

- Capacities from 6,000 to 25,000 pounds
- Double tilt sectors and hollow spindles
- 4 Rackposts between double wall sideplates
- 8" Torque tubes joining lift pinions at rackposts
- 2 Self-locking wormdrives
- Lift pinions run in unison, therefore any failure will halt entire assembly



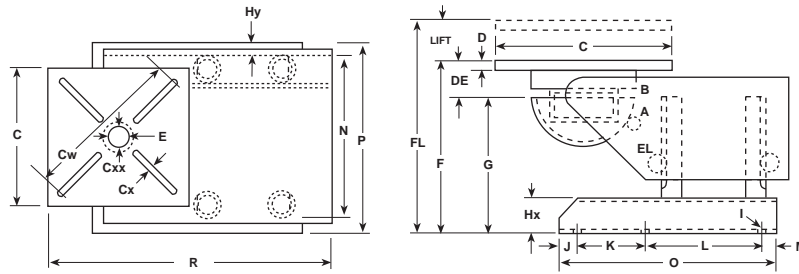
Geared Elevation Assembly:
 (1) 4 Rackposts, (2) Two 8" OD Torque Tubes, (3) Self-locking wormgear drives, (4) Transfer shaft connecting the wormshafts of the worm-gear drives, enabling all 4 lift pinions to run in unison.



KOIKE ARONSON, INC.

P.O. Box 307, Arcade, New York 14009
 Phone (585) 492-2400 FAX (585) 457-3517

Specifications



SPECIFICATIONS	GE60	GE90	GE120	GE180	GE250
TILT: LOAD TORQUE, Lb/In (kg/m)	123,000 (1420)	184,500 (2130)	252,000 (2909)	369,000 (4260)	512,500 (5917)
RATING, Lbs (kg) @ 4" (102mm) CG Height	—	—	—	—	—
6" (152mm) CG Height	—	—	—	—	—
12" (305mm) CG Height	6,000 (2721)	9,000 (4082)	12,000 (5443)	18,000 (8165)	25,000 (11340)
18" (457mm)	4,650 (2109)	7,000 (3175)	9,300 (4218)	13,900 (6905)	19,400 (8800)
24" (610mm)	3,790 (1719)	5,700 (2585)	7,600 (3447)	11,350 (5148)	15,800 (7167)
30" (762mm)	3,200 (1451)	4,800 (2177)	6,450 (2926)	9,600 (4354)	13,300 (6033)
36" (914mm)	2,750 (1247)	4,150 (1882)	5,600 (2540)	8,300 (3765)	11,500 (5216)
42" (1067mm)	2,400 (1089)	3,650 (1656)	4,950 (2245)	7,300 (3311)	10,200 (4627)
48" (1219mm)	2,200 (998)	3,250 (1474)	4,400 (1996)	6,500 (2948)	9,000 (4082)
54" (1372mm)	1,900 (862)	2,950 (1338)	4,000 (1814)	5,900 (2676)	8,200 (3719)
60" (1524mm)	1,700 (771)	2,700 (1225)	3,650 (1656)	5,400 (2449)	7,500 (3402)
66" (1676mm)	1,600 (726)	2,480 (1125)	3,350 (1519)	4,950 (2245)	6,900 (3130)
72" (1829mm)	1,500 (680)	2,300 (1043)	3,100 (1406)	4,600 (2086)	6,400 (2903)
ROT: LOAD TORQUE, Lb/In (kg/m)	72,000 (831)	108,000 (1247)	144,000 (1662)	216,000 (2494)	300,000 (3463)
RATING, Lbs (kg) @ 4" (102mm) Eccentricity	—	—	—	—	—
RATING, Lbs (kg) @ 6" (152mm) Eccentricity	—	—	—	—	—
RATING, Lbs (kg) @ 12" (305mm) Eccentricity	6,000 (2721)	9,000 (4082)	12,000 (5443)	18,000 (8165)	25,000 (11,340)
TILT: 135° in How Many Seconds	35	47	63	47	47
A: Brake-Motor Horsepower	2 hp	3 hp	3 hp	5 hp	10 hp
ADJUSTABLE Limit Switch Triggers	Yes	Yes	Yes	Yes	Yes
ROT: Mod. A Range rpm 30:1 Variable*	1.5 - .05	1.0 - .04	.80 - .026	.50 - .02	.60 - .02
Mod. B Range rpm 60:1 Variable*	1.5 - .025	1.0 - .02	.80 - .013	.50 - .01	.60 - .01
B: HP SCR DC, Dyn Braking	3 hp	3 hp	5 hp	3 hp	7 1/2 hp
Mod CS Constant Speed	1.5 rpm	1.0 rpm	.80 rpm	.67 rpm	.66 rpm
B: HP CS Brake-Motor	3 hp	3 hp	5 hp	3 hp	7 1/2 hp
ELEV: LIFT at Constant Speed, IPM (mm/min)	24 (610)	21 (533)	18 (457)	24 (610)	20 (508)
EL: Brake-Motor Horsepower	3 hp	3 hp	3 hp	5 hp	10 hp
Dust-Tight NEMA 12 Electricals	Yes	Yes	Yes	Yes	Yes
Safety Disconnect Switch, Overload Protected	Yes	Yes	Yes	Yes	Yes
Magnetic Rev. Starter, Overload Protected	Yes	Yes	Yes	Yes	Yes
115v Remote Pendant with cable length of	20 ft (6m)	20 ft (6m)	20 ft (6m)	20 ft (6m)	20 ft (6m)
C: TABLE Size, In (mm)	48x48 (1219x1219)	48x48 (1219x1219)	54x54 (1372x1372)	54x54 (1372x1372)	60x60 (1524x1524)
Cw: Max. Clamping Diameter, In (mm)	64 (1626)	64 (1626)	70 (1778)	70 (1778)	79 (2007)
Cx: Number of Slots and Width, In (mm)	(4) 13/16" (21mm)	(4) 13/16" (21mm)	(4) 11/16" (27mm)	(4) 11/16" (27mm)	(4) 11/16" (27mm)
Number of Slots Nuts & Thread Incl	(4) 3/4"- 10	(4) 3/4"- 10	(4) 1"- 8	(4) 1"- 8	(4) 1"- 8
D: Table Thickness, In (mm)	2 (51)	2 (51)	2 1/2 (63)	2 1/2 (63)	2 1/2 (63)
E: Pilot Hole Dia. & Depth, In (mm)	9.126 x 1 13/16 (232x46)	9.126 x 1 13/16 (232x46)	9.126 x 1 1/2 (232x38)	9.126 x 1 13/16 (232x46)	9.126 x 1 13/16 (232x46)
DE: INHERENT OVERHANG, In (mm)	8 1/2 (216)	8 1/2 (216)	9 (229)	8 1/2 (216)	8 1/2 (216)
SPINDLE/Taper Roller Brg. Bore, In (mm)	10 (254)	10 (254)	10 (254)	10 (254)	10 (254)
Cxx: Hollow Spindle ID, In (mm)	9 (229)	9 (229)	9 (229)	9 (229)	8 1/2 (216)
Guaranteed Weld Current Conduction	2000 amps	2000 amps	2000 amps	2000 amps	2000 amps
F: Table Flat Height Minimum, In (mm)	54 1/2 (1384)	54 1/2 (1384)	55 (1397)	55 (1397)	57 1/2 (1460)
LIFT: Total Lift Amount, In (mm)	33 (838)	33 (838)	33 (838)	33 (838)	33 (838)
FL: Table Flat Height Maximum, In (mm)	87 1/2 (2222)	87 1/2 (2222)	88 (2235)	88 (2235)	90 1/2 (2299)
G: Horiz. Axis Height Minimum, In (mm)	46 (1168)	46 (1168)	46 (1168)	46 1/2 (1181)	49 (1245)
Horiz. Axis Height Maximum, In (mm)	79 (2007)	79 (2007)	79 (2007)	79 1/2 (2019)	82 (2083)
Hx x Hy: Base Leg Depth and Width, In (mm)	8 x 3 1/2 (203 x 89)	8 x 3 1/2 (203 x 89)	8 x 3 1/2 (203 x 89)	8 x 7 (203 x 178)	11 x 7 (279 x 178)
I: BASE Mounting Holes, In (mm)	(4) 13/16 (21mm)	(4) 13/16 (21mm)	(4) 11/8 (28mm)	(6) 11/8 (28mm)	(6) 11/16 (27mm)
J: Front Mounting Hole Location, In (mm)	3 (76)	3 (76)	3 (76)	3 (76)	2 3/4 (70)
K: Center to Rear Mounting Hole, In (mm)	None	None	None	None	None
L: Center to Rear Mounting Hole, In (mm)	74 (1880)	74 (1880)	74 (1880)	74 (1880)	89 1/2 (2273)
M: Rear Mounting Hole Location, In (mm)	3 (76)	3 (76)	3 (76)	3 (76)	13/4 (44)
N: Traverse Center Distance, In (mm)	40 (1016)	40 (1016)	45 (1143)	47 (1194)	66 (1676)
O: BASE Length Overall, In (mm)	80 (2032)	80 (2032)	80 (2032)	80 (2032)	94 (2388)
P: BASE Width Overall, In (mm)	44 (1118)	44 (1118)	48 (1219)	54 (1372)	80 (2032)
R: MODEL Length Overall, In (mm)	96 5/8 (2454)	96 5/8 (2454)	99 5/8 (2530)	100 (2540)	133 (3378)
Standard Primary Voltage:	230/460v	230/460v	230/460v	230/460v	460v
SHIPPING WEIGHT	7300 (3311)	7400 (3356)	8350 (3787)	9500 (4309)	15,000 (6804)

*See Catalog Specification Sheets for optional speeds and accessories. Models and Specifications subject to change without notice.



KOIKE ARONSON, INC.

Web Site Address: www.koike.com

Main Office:

635 W. Main St., Arcade, New York 14009
 Phone (585) 492-2400
 Fax (585) 457-3517 (585) 492-5209

Southern Regional Office:

1285 North Post Oak, Suite 150, Houston, TX 77055
 Phone (713) 682-9645
 Fax (713) 957-4852

Sold By: