

HD Series

Gear Driven Positioners

HD160, HD240, HD400, HD500, HD600, HD700



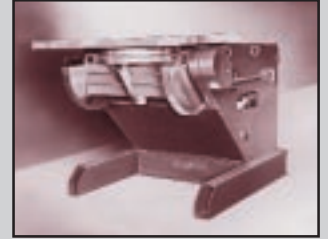
Load Capacities from 16,000 to 70,000 Pounds



The HD160-700 series positioners are built to compete in the larger capacities with their strong boxed chassis and high performance gearing.

Positioners larger than the HD240 are equipped with massive boxed beam-trunnions, spur-gear final drive of table rotation, and self-locking aluminum-bronze wormgear drive of the spur pinion.

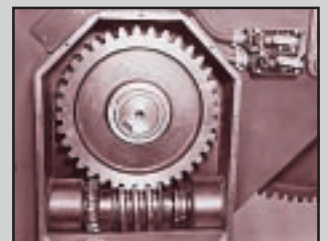
The only thing that contradicts the large capacities of this series is their portability. They can be moved anywhere to tackle the really big jobs.



HD240 Model shows the rugged box chassis and welded steel gearcases that assure accuracy and long-life.

Features

- 135° powered forward tilt
- NEMA 12 electricals
- Pin-through post manual height adjustment
- 90,000 psi aluminum-bronze wormgear drive is self locking to prevent accidental load start-up
- Precision gear cases minimize backlash under heavy loads
- Long-life gearing lubricant which doesn't require maintenance
- Motor mounted within chassis to prevent contamination and accidental contact
- Spur-gear final drive on larger positioners
- HD600 and HD700 offer 8 radial slot tables
- HD700 offers double sideplate chassis and box sections



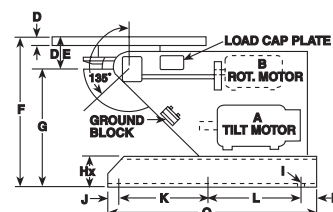
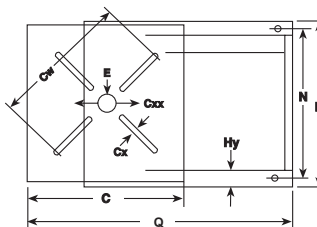
Wormgear Drives are self-locking and minimize total backlash regardless of motor location.



KOIKE ARONSON, INC.

P.O. Box 307, Arcade, New York 14009
Phone (585) 492-2400 FAX (585) 457-3517

Specifications



SPECIFICATIONS	HD160	HD240	HD400	HD500	HD600	HD700
Tilt: Load Torque, lb/in (kg/mm)	336,000 (3879)	504,000 (5819)	840,000 (9698)	1,050,000 (12122)	1,260,000 (14547)	1,470,000 (16971)
Rating lbs (kg) @ 4" (101.6mm) CG Height	-	-	-	-	-	-
Rating lbs (kg) @ 6" (152.4mm) CG Height	-	-	-	-	-	-
Rating lbs (kg) @ 12" (304.8mm) CG Height	16,000 (7257)	24,000 (10886)	40,000 (18144)	50,000 (22680)	60,000 (27215)	70,000 (31751)
Rating lbs (kg) @ 18" (457.2mm) CG Height	12,400 (5624)	18,500 (8391)	31,000 (14061)	39,000 (17690)	46,500 (21092)	54,500 (24721)
Rating lbs (kg) @ 24" (609.6mm) CG Height	10,000 (4536)	15,000 (6804)	25,000 (11340)	32,000 (14515)	38,000 (17236)	44,500 (20185)
Rating lbs (kg) @ 30" (762mm) CG Height	8,600 (3901)	13,000 (5897)	21,500 (9752)	27,000 (12247)	32,000 (14515)	37,500 (17010)
Rating lbs (kg) @ 36" (914.4mm) CG Height	7,400 (3356)	11,000 (4989)	18,500 (8391)	23,450 (10614)	28,000 (12700)	32,500 (14742)
Rating lbs (kg) @ 42" (1066.8mm) CG Height	6,600 (2994)	9,800 (4445)	16,400 (7439)	20,600 (9344)	24,500 (11113)	28,500 (12927)
Rating lbs (kg) @ 48" (1219.2mm) CG Height	5,900 (2676)	8,800 (3992)	14,600 (6622)	18,500 (8391)	22,000 (9979)	25,500 (11567)
Rating lbs (kg) @ 54" (1371.6mm) CG Height	5,300 (2404)	8,000 (3629)	13,200 (5987)	16,700 (7575)	20,000 (9072)	23,000 (10433)
Rating lbs (kg) @ 60" (1524mm) CG Height	4,800 (2177)	7,300 (3311)	12,000 (5443)	15,200 (6895)	18,000 (8165)	21,000 (9525)
Rating lbs (kg) @ 66" (1676.4mm) CG Height	4,400 (1996)	6,700 (3039)	11,000 (4989)	14,000 (6350)	16,500 (7484)	19,500 (8845)
Rating lbs (kg) @ 72" (1828.8mm) CG Height	4,000 (1814)	6,200 (2812)	10,200 (4627)	13,000 (5897)	15,500 (7031)	18,000 (8165)
Rotation: Load Torque, lb/in (kg/m)	192,000 (2217)	288,000 (3325)	480,000 (5542)	600,000 (6927)	720,000 (8312)	840,000 (9698)
Rating lbs (kg) @ 4" (101.6mm) Eccentricity	-	-	-	-	-	-
Rating lbs (kg) @ 6" (152.4mm) Eccentricity	-	-	-	-	-	-
Rating lbs (kg) @ 12" (304.8mm) Eccentricity	16,000 (7257)	24,000 (10886)	40,000 (18144)	50,000 (22680)	60,000 (27215)	70,000 (31751)
Tilt: 135° in how many seconds	46 sec.	46 sec.	96 sec.	110 sec.	125 sec.	140 sec.
A: Brake-motor horsepower	5 HP	7 1/2 HP	7 1/2 HP	10 HP	10 HP	10 HP
Adjustable limit switch triggers	yes	yes	yes	yes	yes	yes
Rotation: Mod A Range rpm 30:1 variable*	.60 - .02	.60 - .02	.50 - .016	none	none	none
Mod B Range rpm 60:1 variable*	.60 - .01	.60 - .01	.50 - .008	.50 - .008	.40 - .007	.53 - .009
B: HP SCR DC, Dyn braking	3 HP	5 HP	7 1/2 HP	10 HP	10 HP	15 HP
Mod CS Constant speed	.60 rpm	.60 rpm	.50 rpm	.50 rpm	.60 rpm	.53 rpm
B: HP CS Brake-motor	3 HP	5 HP	7 1/2 HP	10 HP	15 HP	15 HP
Dust-tight NEMA 12 electricals	yes	yes	yes	yes	yes	yes
Safety disconnect switch, overload protected	yes	yes	yes	yes	yes	yes
Magnetic rev. starter, overload protected	yes	yes	yes	yes	yes	yes
115v remote pendant with cable length of:	20 ft (6m)	20 ft (6m)	30 ft (9m)	30 ft (9m)	30 ft (9m)	30 ft (9m)
C: Table size:	54" x 54" (1372 x 1372mm)	54" x 54" (1372 x 1372mm)	84" x 84" (2134 x 2134mm)	84" x 84" (2134 x 2134mm)	96" x 96" (2438 x 2438mm)	96" x 96" (2438 x 2438mm)
Cw: Max. clamping diameter	70" (1778mm)	70" (1778mm)	113" (2870.2mm)	113" (2870.2mm)	127" (3225.8mm)	127" (3225.8mm)
Cx: Number of slots and width	(4) 1 1/16" (27mm)	(4) 1 1/16" (27mm)	(4) 1 5/16" (33.3mm)	(4) 1 5/16" (33.3mm)	(8) 1 5/16" (41.3mm)	(8) 1 5/16" (41.3mm)
Number of slots nuts & thread incl.	(4) 1" - 8	(4) 1" - 8	(4) 1 1/4" - 7	(4) 1 1/4" - 7	(8) 1 1/2" - 12	(8) 1 1/2" - 12
D: Table thickness	2 1/2" (63.5mm)	2 1/2" (63.5mm)	2 3/4" (69.8mm)	2 3/4" (69.8mm)	3" (76.2mm)	3" (76.2mm)
E: Pilot hole diameter and depth	5.01" x 1/2" (127 x 13mm)	5.010" x 1/2" (127 x 13mm)	12.3" x 1 1/4" (312 x 32mm)	12.3" x 1 1/4" (312 x 32mm)	12.3" x 1 1/4" (312 x 32mm)	12.3" x 1 1/4" (312 x 32mm)
DE: Inherent overhang	9" (228.6mm)	9" (228.6mm)	8 3/4" (222.2mm)	8 3/4" (222.2mm)	9" (228.6mm)	9" (228.6mm)
Spindle OD/Taper roller brg. bore	5" (127mm)	5" (127mm)	14" (355.6mm)	14" (355.6mm)	14" (355.6mm)	14" (355.6mm)
Cxx: Hollow spindle ID	Solid	Solid	12" (304.8mm)	12" (304.8mm)	12" (304.8mm)	12" (304.8mm)
Guaranteed weld current conduction	2000 amps	2000 amps	3000 amps	3000 amps	3000 amps	3000 amps
F: Table flat, Minimum height	59" (1498.6mm)	59" (1498.6mm)	71" (1803.4mm)	71" (1803.4mm)	74" (1879.6mm)	74" (1879.6mm)
Table flat, Maximum height	95" (2413mm)	95" (2413mm)	119" (3022.6mm)	119" (3022.6mm)	122" (3098.8mm)	122" (3098.8mm)
Adjustable height increments	6" (152.4mm)	6" (152.4mm)	12" (304.8mm)	12" (304.8mm)	12" (304.8mm)	12" (304.8mm)
G: Horiz. Axis, Minimum height	50" (1270mm)	50" (1270mm)	62" (1574.8mm)	62" (1574.8mm)	65" (1651mm)	65" (1651mm)
Horiz. Axis, Maximum height	86" (2184.4mm)	86" (2184.4mm)	110" (2794mm)	110" (2794mm)	113" (2870.2mm)	113" (2870.2mm)
Matches Tailstock model (min. hgt.)	TS16	TS25	-	-	-	-
Hx x Hy: Base leg depth and width	10" x 5 1/2" (254 x 140mm)	10" x 5 1/2" (254 x 140mm)	10" x 8" (254 x 203mm)	10" x 8" (254 x 203mm)	13" x 8" (330 x 203mm)	13" x 8" (330 x 203mm)
I: Base mounting holes	(6) 1 1/16" (27mm)	(6) 1 1/16" (27mm)	(2) 1 5/8" (41.3mm)	(2) 1 5/8" (41.3mm)	(2) 1 5/8" (41.3mm)	(2) 1 5/8" (41.3mm)
J: Front mounting hole location	2" (50.8mm)	2" (50.8mm)	none	none	none	none
K: Center mounting hole location	40 1/2" (1028.7mm)	40 1/2" (1028.7mm)	none	none	none	none
L: Center to rear mounting hole	24" (609.6mm)	24" (609.6mm)	none	none	none	none
M: Rear mounting hole location	4 3/4" (120.6mm)	3 1/4" (120.6mm)	4" (101.6mm)	4" (101.6mm)	4" (101.6mm)	4" (101.6mm)
N: Traverse center distance	57 1/2" (1460.5mm)	357 1/2" (1460.5mm)	91 3/4" (2330.4mm)	91 3/4" (2330.4mm)	94 3/4" (2330.4mm)	94 3/4" (2330.4mm)
O: Base length overall	71 1/4" (1809.7mm)	71 1/4" (1809.7mm)	90" (2286mm)	90" (2286mm)	90" (2286mm)	90" (2286mm)
P: Base width overall	63" (1600.2mm)	63" (1600.2mm)	100 3/4" (2559mm)	100 3/4" (2559mm)	103 3/4" (2559mm)	103 3/4" (2559mm)
Q: Model length overall	90 1/4" (2292.3mm)	90 1/4" (2292.3mm)	124" (3149.6mm)	124" (3149.6mm)	130" (3302mm)	130" (3302mm)
Standard primary voltage	230/460v	230/460v	460v	460v	460v	460v
Shipping weight	7650 lbs (3470kg)	7800 lbs (3538kg)	15000 lbs (6804kg)	15,200 lbs (6895kg)	18,800 lbs (8527kg)	19,000 lbs (8618kg)

*See catalog specification sheets for optional speeds and accessories. Models and specifications subject to change without notice.



KOIKE ARONSON, INC.

Web Site Address: www.koike.com

Main Office:

635 W. Main St., Arcade, New York 14009
 Phone (585) 492-2400
 Fax (585) 457-3517 (585) 492-5209

Southern Regional Office:

1285 North Post Oak, Suite 150, Houston, TX 77055
 Phone (713) 682-9645
 Fax (713) 957-4852

Sold By: