

LOCUST-II

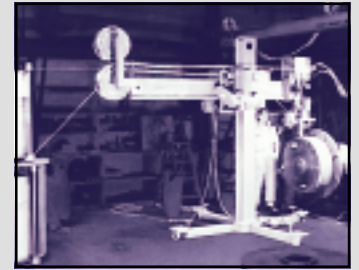
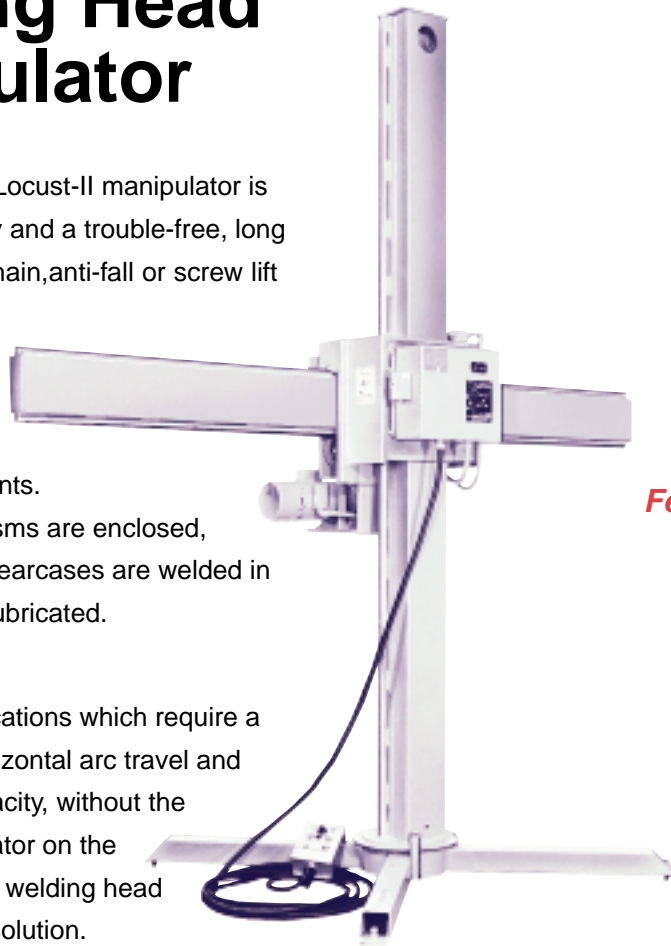
Welding Head Manipulator

The gear elevated Locust-II manipulator is designed for safety and a trouble-free, long life. There are no chain, anti-fall or screw lift devices to fail.

Motion is not lost as booms will not bounce or whip during arc movements.

All critical mechanisms are enclosed, and load carrying gearcases are welded in place and lifetime lubricated.

For industrial applications which require a large degree of horizontal arc travel and greater weight capacity, without the location of an operator on the boom, the Locust-II welding head manipulator is the solution.



Locust-II manipulator and twin-wire, sub-arc process shown on this hardfacing operation.

Features

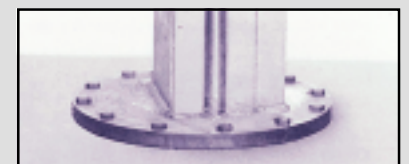
- Load capacities up to 600 pounds
- Four sizes to 12' x 12'
- Manual sub-arc and forced flux feeder maximizes utilization
- NEMA 12 electricals
- Dust-tight enclosures and push-button pendants resist contamination
- Floor-base or car-track configurations available
- A variety of accessories allow application versatility

Power and Speed Options

Reach:	VRA: 100-3.3 ipm (2540-83.8mm/pm) Variable Reach, 30:1 SCR DC 1/3 hp
	VRB: 100-1.7 ipm (2540-43.2 mm/pm) Variable Reach, 60:1 SRC DC 1/3 hp
	CR: 100 ipm (2540 mm/pm) Constant Reach, 1/4 hp Brakemotor
	MR: Manual Handcrank Reach, no power
Lift:	VL: 34-1.1 ipm (863.6-27.9 mm/pm) Variable Lift, 1 1/2 hp DC Motor
	CL: 34 ipm (863.6 mm/pm) Constant Lift, 3/4 hp Brakemotor
	ML: Manual Handcrank Lift, no power
Kingpin: (with car only)	VK: .2-.007 RPM Variable Rotation, 1 hp DC Motor
	CK: .2 RPM Constant Rotation, 1 hp Brakemotor
	MK: Manual Rotation, Wrench-locked
Car:	VT: 100-3.3 ipm (2540-84 mm/pm) Variable Traverse, 1/2 hp DC Motor
	CT: 100 ipm (2540 mm/pm) Constant Traverse, 1/2 hp Brakemotor
	MT: Manual Traverse, Wrench-locked
Note: Variable Speed Options have Rapid Traverse and Inching features.	



Kingpin-Car and Track.



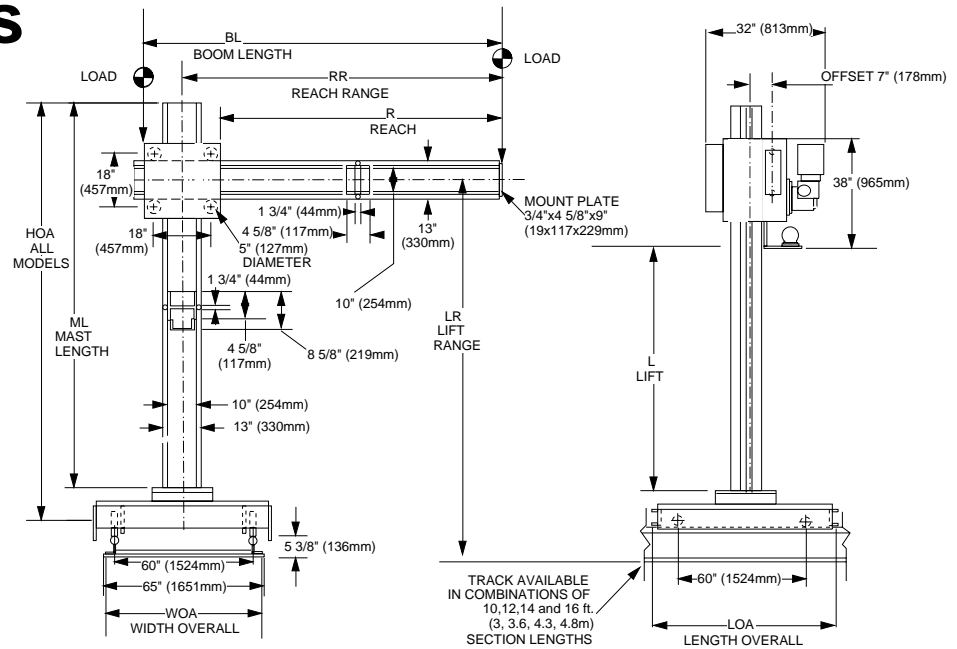
Stationary bolted Base.



KOIKE ARONSON, INC.

P.O. Box 307, Arcade, New York 14009
Phone (585) 492-2400 FAX (585) 457-3517

Specifications



LOCUST-II

SPECIFICATIONS	6 x 6	8 x 8	10 x 10	12 x 12
Load Capacity:	600 lbs. (272 kg)	500 lbs. (227 kg)	400 lbs. (181 kg)	300 lbs. (136 kg)
R: Reach, Travel:	6' (1.8 m)	8' (2.4 m)	10' (3 m)	12' (3.6 m)
BL: Boom Length	103" (2616 mm)	127" (3226 mm)	151" (3835 mm)	175" (4445 mm)
RR: Reach, Range	15 1/2"-87 1/2" (394-2222 mm)	15 1/2"-111 1/2" (394-2832 mm)	15 1/2" - 135 1/2" (394 - 3442 mm)	15 1/2"-159 1/2" (394 - 4051 mm)
L: Lift, Travel	6' (1.8 m)	8' (2.4 m)	10' (3 m)	12' (3.6 m)
ML: Mast Length	114 1/2" (2909 mm)	138 1/2" (3518 mm)	162 1/2" (4127 mm)	186 1/2" (4737 mm)
LR: Lift, Range (below)				
LR: Stationary Base	28 1/4"-100 1/4" (717-2546 mm)	28 1/4"-124 1/4" (717-3156 mm)	28 1/4" - 148 1/4" (717 - 3765 mm)	28 1/4" - 172 1/4" (717 - 4375 mm)
HOA: Height Overall	114 1/2" (2908 mm)	138 1/2" (3518 mm)	162 1/2" (4127 mm)	186 1/2" (4737 mm)
DIA: Baseplate Diameter	24" (610 mm)	24" (610 mm)	24" (610 mm)	24" (610 mm)
LR: Stationary Kingpin	37 1/4"-109 1/4" (946-2775 mm)	37 1/4" - 133 1/4" (946-3384 mm)	37 1/4" - 157 1/4" (946 - 3994 mm)	37 1/4" - 181 1/4" (946 - 4604 mm)
HOA: Height Overall	123 1/2" (3137 mm)	147 1/2" (3746 mm)	171 1/2" (4356 mm)	195 1/2" (4966 mm)
DIA: Baseplate Diameter	30" (762 mm)	30" (762 mm)	30" (762 mm)	30" (762 mm)
LR: Portable Fixed Base	36 1/4"-108 1/4" (921-2749 mm)	36 1/4"-132 1/4" (921-3359 mm)	36 1/4"-156 1/4" (921-3969 mm)	36 1/4"-180 1/4" (921-4578 mm)
HOA: Height Overall	122 1/2" (3111 mm)	146 1/2" (3721 mm)	170 1/2" (4331 mm)	194 1/2" (4940 mm)
DIA: X-Base Diameter	111" (2819 mm)	111" (2819 mm)	123" (3124 mm)	147" (3734 mm)
LR: Portable Kingpin	37"-109" (940-2769 mm)	37"-133" (940-3378 mm)	37"-157" (940-3988 mm)	37"-181" (940-4597 mm)
HOA: Height Overall	123 1/4" (3130 mm)	147 1/4" (3740 mm)	171 1/4" (4350 mm)	195 1/4" (4959 mm)
DIA: X-Base Diameter	111" (2819 mm)	111" (2819 mm)	123" (3124 mm)	147" (3734 mm)
LR: Car	45 5/8"-117 5/8" (1159-2988 mm)	45 5/8"-141 5/8" (1159-3597 mm)	45 5/8"-165 5/8" (1159-4207 mm)	45 5/8"-189 5/8" (1159-4816 mm)
HOA: Height Overall	131 7/8" (3349 mm)	155 7/8" (3959 mm)	179 7/8" (4569 mm)	203 7/8" (5178 mm)
WOA: Width Overall	66 1/4" (1683 mm)	66 1/4" (1683 mm)	66 1/4" (1683 mm)	66 1/4" (1683 mm)
LOA: Length Overall	75 1/2" (1918 mm)	75 1/2" (1918 mm)	75 1/2" (1918 mm)	75 1/2" (1918 mm)
LR: Car-Kingpin	48 1/2"-120 1/2" (1232-3061 mm)	48 1/2"-144 1/2" (1051-3184 mm)	48 1/2"-168 1/2" (1232-4280 mm)	48 1/2"-192 1/2" (1232-3670 mm)
HOA: Height Overall	134 3/4" (3423 mm)	158 3/4" (4032 mm)	182 3/4" (4642 mm)	206 3/4" (5251 mm)
WOA: Width Overall	66 1/4" (1683 mm)	66 1/4" (1683 mm)	60" (1524 mm)	60" (1524 mm)
LOA: Length Overall	75 1/2" (1918 mm)	75 1/2" (1918 mm)	72" (1829 mm)	72" (1829 mm)



KOIKE ARONSON, INC.

Web Site Address: www.koike.com

Main Office:

635 W. Main St., Arcade, New York 14009
Phone (585) 492-2400
Fax (585) 457-3517 (585) 492-5209

Southern Regional Office:

1285 North Post Oak, Suite 150, Houston, TX 77055
Phone (713) 682-9645
Fax (713) 957-4852

Sold By: