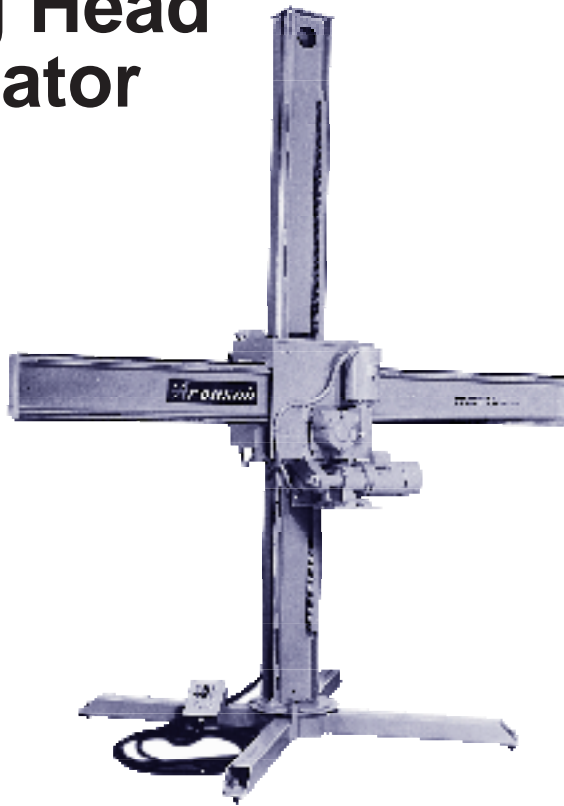


LOCUST-1

Welding Head Manipulator



Locust-1 series offers three different size models with load capacities of up to 400 pounds.

Features

- Load capacities up to 400 pounds
- Three sizes to 8' x 8'
- Manual sub-arc and forced flux feeder maximizes utilization
- NEMA 12 electricals
- Dust-tight enclosures and push-button pendants resist contamination
- Floor-base or car-track configurations available
- A variety of accessories allow application versatility



The Locust-1 Manipulator was specifically designed to facilitate smaller welding jobs at the ground level. A steady arc can be maintained which results in highly accurate welds and the absence of lost motion and deflection.

Power and Speed Options

Reach: VRA: 100-3.3 ipm (2540-83.8mm/pm) Variable Reach, 30:1 SCR DC 1/3 hp
 VRB: 100-1.7 ipm (2540-43.2 mm/pm) Variable Reach, 60:1 SRC DC 1/3 hp
 CR: 100 ipm (2540 mm/pm) Constant Reach, 1/4 hp Brakemotor
 SR: Manual Handcrank Reach, no power
 MR: Manual Reach, push-pull, no handcrank

Lift: VL: 34-1.1 ipm (863.6-27.9 mm/pm) Variable Lift, 1/2 hp DC Motor
 CL: 34 ipm (863.6 mm/pm) Constant Lift, 1/2 hp Brakemotor

Kingpin: PK: Manual Rotation, Wrench-locked

Car: VT: 150-5 ipm (3810-127 mm/pm) Variable Traverse, 1/2 hp DC Motor
 CT: 150 ipm (3810 mm/pm) Constant Traverse, 1/2 hp Brakemotor
 MT: Manual Traverse, Wrench-locked

Note: Variable Speed Options have Rapid Traverse and Inching features.



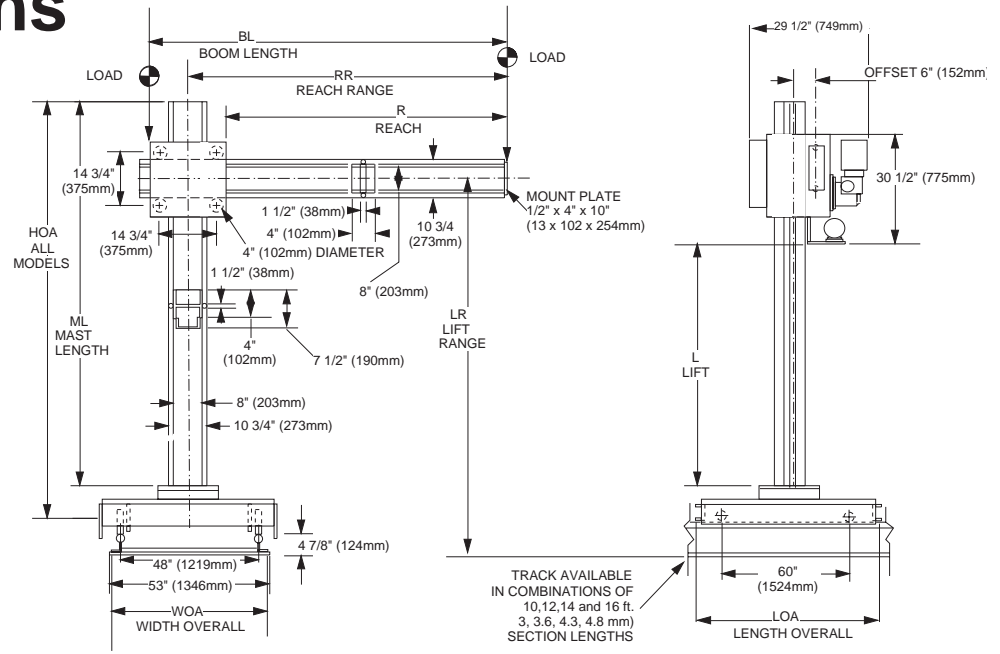
NEMA 12 Electricals include dust tight enclosures and push button pendants.



KOIKE ARONSON, INC.

P.O. Box 307, Arcade, New York 14009
 Phone (585) 492-2400 FAX (585) 457-3517

Specifications



SPECIFICATIONS	6 x 6	7 x 7	8 x 8
Load Capacity:	400 lbs. (181 kg)	350 lbs. (159 kg)	300 lbs. (136 kg)
R: Reach, Travel:	6' (1829 mm)	7' (2134 mm)	8' (2438 mm)
BL: Boom Length	97" (2464 mm)	109" (2769 mm)	121" (3073 mm)
RR: Reach, Range	13" - 85" (330 - 2159 mm)	13" - 97" (330 - 2464 mm)	13" - 109" (330 - 2769 mm)
L: Lift, Travel	6' (1829 mm)	7' (2134 mm)	8' (2438 mm)
ML: Mast Length	107" (2718 mm)	119" (3023 mm)	131" (3327 mm)
LR: Lift, Range (below)			
LR: Stationary Base	24" - 96" (610 - 2438 mm)	24" - 108" (610 - 2743 mm)	24" - 120" (610 - 3048 mm)
HOA: Height Overall	107" (2718 mm)	119" (3023 mm)	131" (3327 mm)
DIA: Baseplate Diameter	15 1/4" (387 mm)	15 1/4" (387 mm)	15 1/4" (387 mm)
LR: Stationary Kingpin	30" - 102" (762 - 2591 mm)	30" - 114" (762 - 2896 mm)	30" - 126" (762 - 3200 mm)
HOA: Height Overall	113" (2870 mm)	125" (3175 mm)	137" (3480 mm)
DIA: Baseplate Diameter	24" (610 mm)	24" (610 mm)	24" (610 mm)
LR: Portable Fixed Base	29" - 101" (737 - 2565 mm)	29" - 113" (737 - 2870 mm)	29" - 125" (737 - 3175 mm)
HOA: Height Overall	112" (2845 mm)	124" (3150 mm)	136" (3454 mm)
DIA: X-Base Diameter	87" (2210 mm)	99" (2515 mm)	99" (2515 mm)
LR: Portable Kingpin	29 1/2" - 101 1/2" (749 - 2578 mm)	29 1/2" - 113 1/2" (749 - 2883 mm)	29 1/2" - 125 1/2" (749 - 3188 mm)
HOA: Height Overall	112 1/2" (2857 mm)	124 1/2" (3162 mm)	136 1/2" (3467 mm)
DIA: X-Base Diameter	87" (2210 mm)	99" (2515 mm)	99" (2515 mm)
LR: Car	39 3/8" - 111 3/8" (1000 - 2829 mm)	39 3/8" - 123 3/8" (1000 - 3134 mm)	39 3/8" - 135 3/8" (1000 - 3438 mm)
HOA: Height Overall	122 3/8" (3108 mm)	134 3/8" (3413 mm)	146 3/8" (3718 mm)
WOA: Width Overall	60" (1524 mm)	60" (1524 mm)	60" (1524 mm)
LOA: Length Overall	72" (1829 mm)	72" (1829 mm)	72" (1829 mm)
LR: Car-Kingpin	41 3/8" - 113 3/8" (1051 - 2880 mm)	41 3/8" - 125 3/8" (1051 - 3184 mm)	41 3/8" - 137 3/8" (1051 - 3489 mm)
HOA: Height Overall	124 3/8" (3159 mm)	136 3/8" (3464 mm)	148 3/8" (3769 mm)
WOA: Width Overall	60" (1524 mm)	60" (1524 mm)	60" (1524 mm)
LOA: Length Overall	72" (1829 mm)	72" (1829 mm)	72" (1829 mm)



KOIKE ARONSON, INC.

Main Office:

635 W. Main St., Arcade, New York 14009
 Phone (585) 492-2400
 Fax (585) 457-3517 (585) 492-5209

Southern Regional Office:

1285 North Post Oak, Suite 150, Houston, TX 77055
 Phone (713) 682-9645 Fax (713) 957-4852

Sold By: