

TR Series

A-AAA Turning Rolls (Ransome Design)



Koike Aronson / Ransome Turning Rolls are engineered and built for the most effective positioning of long cylindrical work pieces. Tanks, pressure vessels and pipe are all well suited for industrial applications utilizing Turning Rolls. Long awkward objects may be adapted to these Positioners with the use of false rings.

Offering the widest range of styles and capacities in the world, with many options available to customize your application, Koike Aronson / Ransome Turning Rolls ensure continuous production with dependable performance. Given Koike Aronson / Ransome's commitment to engineering excellence you can be assured of the highest quality features designed to meet your needs for high performance Turning Rolls.

Constant Centerline, Steel wheels, Tachometers, foot controls and special engineered designs available.

Capacities from 7-1/2 to 30 Ton



KOIKE ARONSON, INC. / RANSOME

P.O. Box 307, Arcade, New York 14009
Phone (585) 492-2400 Fax (585) 457-3517
www.koike.com

Features

- ◆ Rubber or steel wheels
- ◆ Variable Frequency drives and motors
- ◆ Adjustable for a wide diameter range
- ◆ Hand pendant control
- ◆ Individual Drivers and Idlers can be placed anywhere under workpiece and can be used in various combinations



Specifications

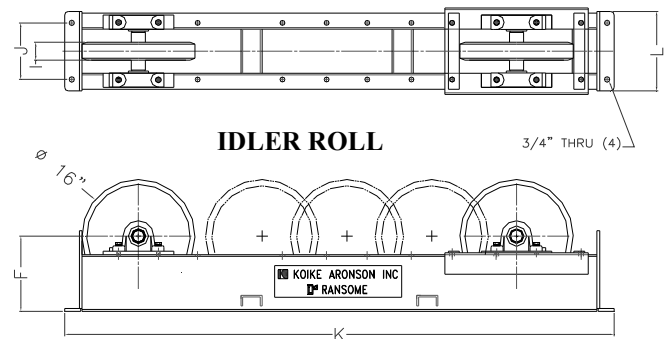
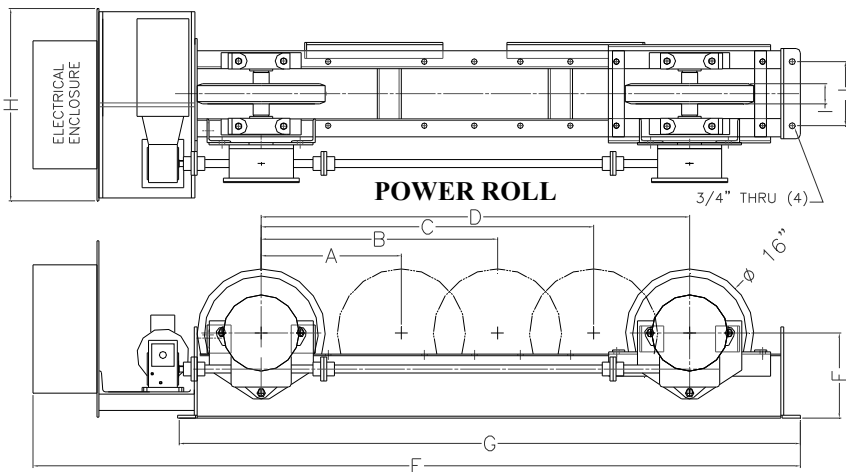


A-AAA Turning Rolls (Ransome Design)

	MODEL A	MODEL AA	MODEL AAA
Capacity Per Unit	5,000 Lbs. (2.5 Ton)	10,000 Lbs. (5 Ton)	20,000 Lbs. (10 Ton)
Capacity Driver / 1 Idler	10,000 Lbs. (5 Ton)	20,000 Lbs. (10 Ton)	40,000 Lbs. (20 Ton)
Capacity Driver / 2 Idlers	15,000 Lbs. (7.55 Ton)	30,000 Lbs. (15 Ton)	60,000 Lbs. (30 Ton)
Std. Dia. Range	5" - 12'	5" - 12'	5" - 12'
Speed Range (IPM)	58 - 1.16	58 - 1.16	60 - 1.2
Wheel Diameter	16"	16"	16"
Dim 'A' Center Distance	17-1/2"	17-1/2"	17-1/2"
Diameter Range	5" - 28" Dia Range	5" - 28" Dia Range	5" - 28" Dia Range
Dim 'B' Center Distance	29-1/2"	29-1/2"	29-1/2"
Diameter Range	28" - 60" Dia Range	28" - 60" Dia Range	28" - 60" Dia Range
Dim 'C' Center Distance	41-1/2"	41-1/2"	41-1/2"
Diameter Range	60" - 92" Dia Range	60" - 92" Dia Range	60" - 92" Dia Range
Dim 'D' Center Distance	53-1/2"	53-1/2"	53-1/2"
Diameter Range	92" - 144" Dia Range	92" - 144" Dia Range	92" - 144" Dia Range
Dim E	95-7/8"	98-3/4"	100-5/16"
Dim F	10-5/8"	10-5/8"	11-3/4"
Dim G	77-9/16"	77-3/4"	74-1/2"
Dim H	24"	24"	29"
Dim I (Wheel Width)	2-1/2"	5"	10"
Dim J	8"	8"	15-1/8"
Dim K	77-3/4"	77-3/4"	78"
Dim L	12-1/4"	12-1/4"	18-5/8"
Approx. weight Driver	700 Lbs.	730 Lbs.	1250 Lbs.
Approx. weight Idler	416 Lbs.	375 Lbs.	751 Lbs.



SPECIFICATIONS SUBJECT TO CHANGE



KOIKE ARONSON, INC. / RANSOME

Main Office:
P.O. Box 307, Arcade, New York 14009
Phone (585) 492-2400 Fax (585) 457-3517

Visit us at www.koike.com