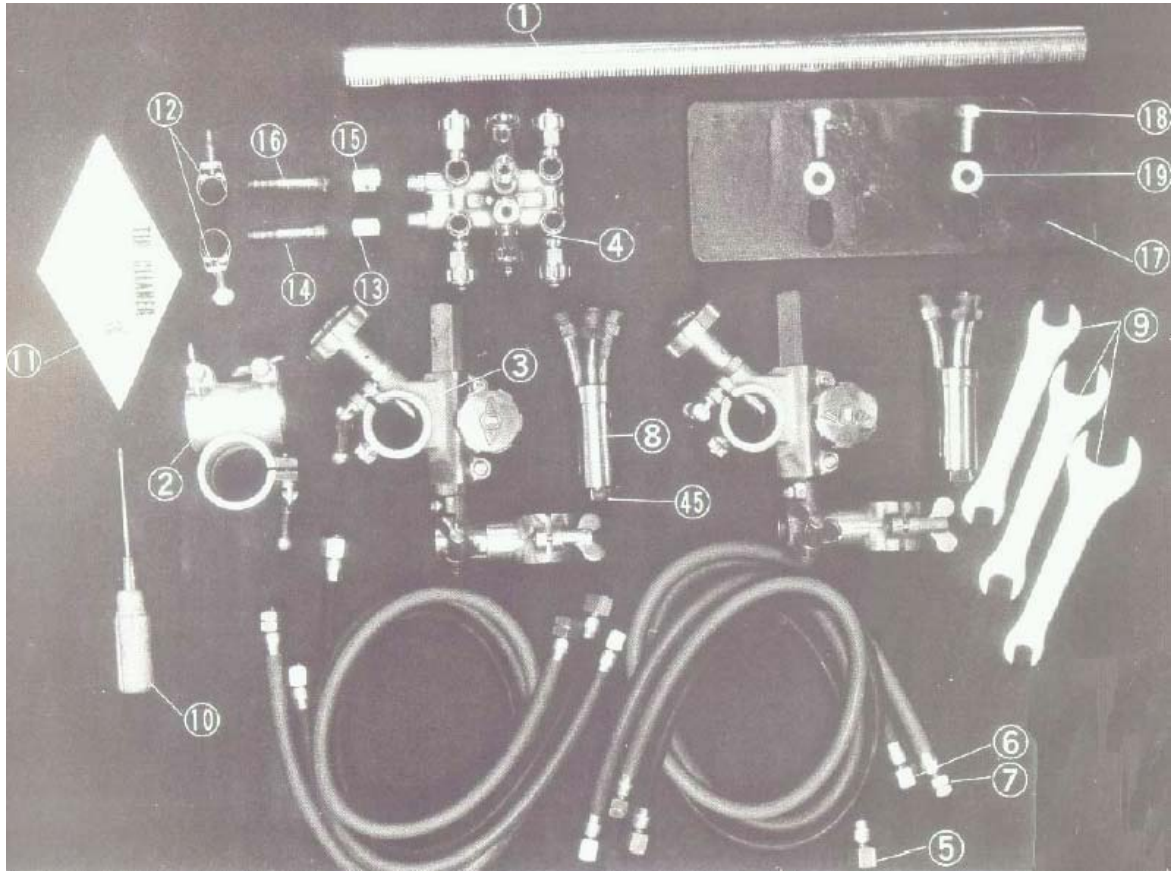
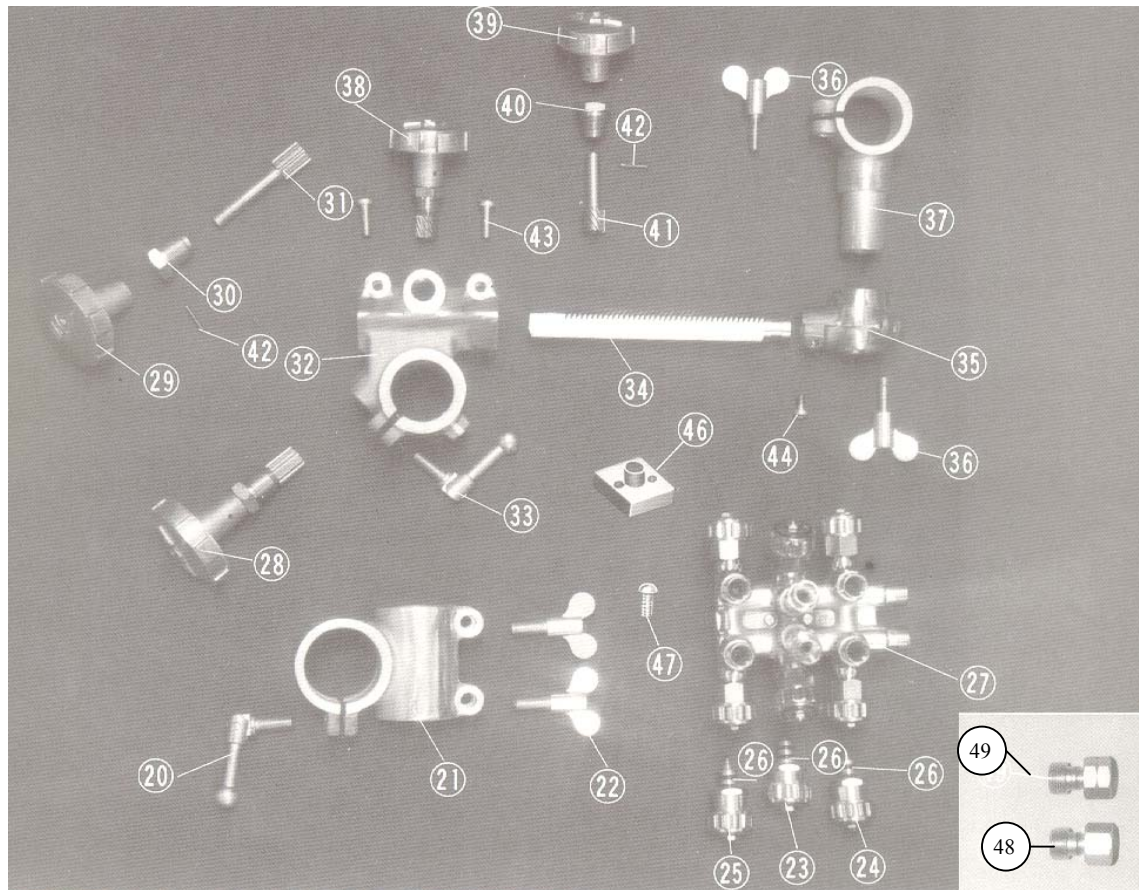


Diagrams and Parts List
IK-12MAX
Torch S-200



Item No	Part Name	Qty	Stock No	Remarks
1	Pipe arm	1	30321	Standard 500mm
2	Arm holder	1	30301	
3	Torch holder (B type)	2	30302	
4	Distributor	1	13251	Except USA
			13252	USA Only
			13256	KE Only
5	Hose for jet oxygen	2	30322	Except USA 900L
			30323	USA Only 900L
			30324	KE Only
6	Hose for preheat oxygen	2	30324	Except USA 900L
			30325	USA Only
7	Hose for gas	2	30326	Except USA
			30327	USA Only
8	Torch	2	10601	Except USA
			10602	USA Only
			10606	KE Only
9	Spanner	1	30309	
10	Screw driver	1	30310	
11	Tip Cleaner	1	30311	
12	Hose band	2	30312	Except USA
13	Nut for oxygen	1	15001	Except USA M16xP1.5
			15056	KE Only
14	Hose connector for oxygen	1	15003	Except USA 5/16
			15040	KE Only

15	Nut for gas	1	15002	Except USA M16xP1.5 Left
			15054	KE Only
16	Hose connector for gas	1	15004	Except USA 3/8
			15062	KE Only
17	Weight	1	30346	
18	Hex bolt	2	BH-10X35	M10x35L
19	Washer	2	WF-10	φ10



Item No	Part Name	Qty	Stock No	Remarks
20	Crank handle	1	30313	
21	Bar holder	1	30314	
22	Wing bolt	2	30315	
23	Valve for jet oxygen	2	15251	Old No. 15114
24	Valve for preheat oxygen	2	15255	Old No. 15112
25	Valve for gas	2	15256	Old No. 15113
26	O-Ring		05026	
28	Cross feed assembly	1	30316	
29	Handle	1	30317	
30	Pinion metal	1	30318	
31	Pinion	1	30319	
32	Cross feed unit	1	30320	With key
33	Crank handle	1	30313	
34	Slide bar	1	30390	
35	Torch holder bracket	1	30391	
36	Wing bolt	2	30392	
37	Torch holder	1	30393	
38	Up/down handle assembly	1	30394	
39	Handle	1	30223	
40	Pinion metal	1	30395	
41	Pinion	1	30396	
42	Spring pin	2	PR-2.5X16	φ2.5x16L
43	Screw	2	SP-6X18	M6x18L
44	Screw	1	SP-5X10	M5x10L
45	Tip fixing nut		05020	
46	Distributor bracket	1	32347	
47	Screw	2	SP-4X20	M4x20L
48	Hose joint		12917	KE Only
49	Hose joint		12904	KE Only