

# SCARAB-I

## Welding Head Manipulator

The Scarab-I has proven to be our most popular welding head manipulator with a wide range of configurations and capacities up to 1700 lbs. This manipulator moves the arc in a steady, precise manner which assures weld integrity and consistent deposition at desired rates. A broad selection of accessories can be added to facilitate most industrial applications.



### Power and Speed Options

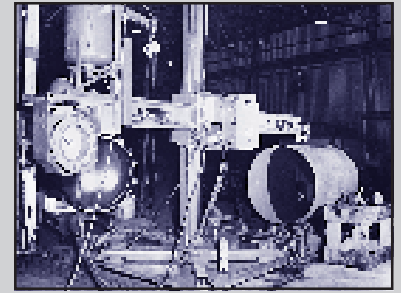
**Reach:** VRA: 100-3.3 ipm (2540-84mm/pm) Variable Reach, 30:1 SCR DC 1/2 hp  
 VRB: 100-1.7 ipm (2540-43 mm/pm) Variable Reach, 60:1 SRC DC 1/2 hp  
 CR: 100 ipm (2540 mm/pm) Constant Reach, 1/2 hp Brakemotor  
 MR: Manual Handcrank Reach, no power

**Lift:** VL: 32-1.1 ipm (813-28 mm/pm) Variable Lift, 1 hp DC Motor  
 CL: 32 ipm (813 mm/pm) Constant Lift, 1 hp Brakemotor  
 ML: Manual Handcrank Lift, no power

**Kingpin:** VK: .2-.007 RPM Variable Rotation, 1 hp DC Motor  
 CK: .2 RPM Constant Rotation, 1 hp DC Motor  
 MK: Manual Rotation, Wrench-locked

**Car:** VT: 100-3.3 ipm (2540-84 mm/pm) Variable Traverse, 1/2 hp DC Motor  
 CT: 100 ipm (2540 mm/pm) Constant Traverse, 2 hp Brakemotor  
 MT: Manual Traverse, Wrench-locked

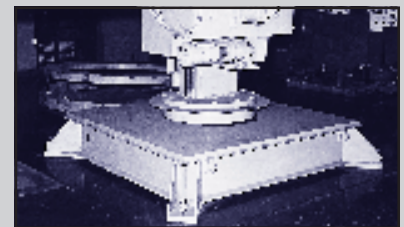
**Note:** Variable Speed Options have Rapid Traverse and Inching features.



*Scarab-I precision weld positioning done on this fabricated cylinder application.*

### Features

- Gear elevated welding for load capacities up to 1700 pounds
- Five sizes up to 14' x 14'
- Application versatility with a variety of accessories including Kingpin-Base and Outrigger, Kingpin-Car and Track, Portable Kingpin-Base, etc.



*Kingpin Base and Outrigger options.*



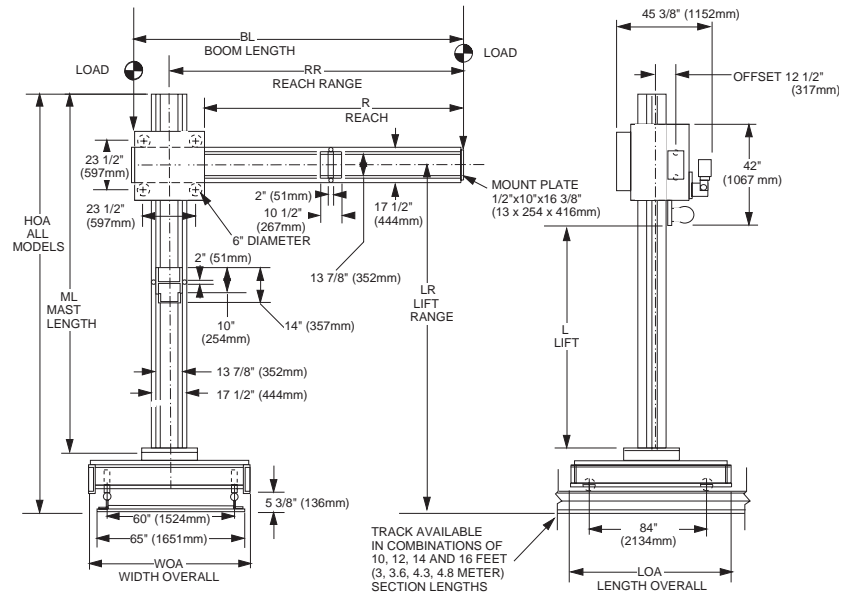
*Kingpin Car and Track.*



## KOIKE ARONSON, INC.

P.O. Box 307, Arcade, New York 14009  
 Phone (585) 492-2400 FAX (585) 457-3517

# Specifications



## SCARAB-I

SPECIFICATIONS		6 x 6	8 x 8	10 x 10	12 x 12	14 x 14
<b>Load Capacity:</b>	lb (kg)	1700 (771)	1500 (680)	1300 (590)	1100 (499)	900 (408)
<b>R: Reach, Travel:</b>	ft (m)	6 (1.8)	8 (2.4)	10 (3)	12 (3.6)	14 (4.3)
<b>BL: Boom Length</b>	in (mm)	108 (2743)	132 (3353)	156 (3962)	180 (4572)	204 (5182)
<b>RR: Reach, Range</b>	in (mm)	18-90 (457-2286)	18-114 (457-2896)	18-138 (457-3505)	18-162 (457-4115)	18-186 (457-4724)
<b>L: Lift, Travel</b>	ft (m)	6 (1.8)	8 (2.4)	10 (3)	12 (3.6)	14 (4.3)
<b>ML: Mast Length</b>	in (mm)	120 (3048)	144 (3658)	168 (4267)	162 (4877)	216 (5486)
<b>LR: Lift, Range (below)</b>						
<b>LR: Stationary Base</b>	in (mm)	28-100 (711-2540)	28-124 (711-2540)	28-148 (711-3759)	28-172 (711-4369)	28-196 (711-4978)
<b>HOA: Height Overall</b>	in (mm)	120 (3048)	144 (3658)	168 (4267)	192 (4877)	216 (5486)
<b>DIA: Baseplate Dia.</b>	in (mm)	24 (610)	24 (610)	24 (610)	24 (610)	24 (610)
<b>LR: Stationary Kingpin</b>	in (mm)	38 <sup>3</sup> / <sub>4</sub> -110 <sup>3</sup> / <sub>4</sub> (984-2813)	38 <sup>3</sup> / <sub>4</sub> -134 <sup>3</sup> / <sub>4</sub> (984-3423)	38 <sup>3</sup> / <sub>4</sub> -158 <sup>3</sup> / <sub>4</sub> (984-4032)	38 <sup>3</sup> / <sub>4</sub> -182 <sup>3</sup> / <sub>4</sub> (984-4642)	38 <sup>3</sup> / <sub>4</sub> -206 <sup>3</sup> / <sub>4</sub> (984-5251)
<b>HOA: Height Overall</b>	in (mm)	130 <sup>3</sup> / <sub>4</sub> (3321)	154 <sup>3</sup> / <sub>4</sub> (3931)	178 <sup>3</sup> / <sub>4</sub> (4540)	202 <sup>3</sup> / <sub>4</sub> (5150)	226 <sup>3</sup> / <sub>4</sub> (5759)
<b>DIA: Baseplate Dia.</b>	in (mm)	36 (914)	36 (914)	36 (914)	36 (914)	36 (914)
<b>LR: Portable Fixed-Base</b>	in (mm)	38-110 (965-2794)	38-134 (965-3404)	38-158 (965-4013)	38-182 (965-4623)	38-206 (965-5232)
<b>HOA: Height Overall</b>	in (mm)	130 (3302)	154 (3912)	178 (4521)	202 (5131)	226 (5740)
<b>DIA: X-Base Dia.</b>	in (mm)	110 (2794)	134 (3404)	134 (3404)	158 (4013)	158 (4013)
<b>LR: Portable Kingpin</b>	in (mm)	38 <sup>3</sup> / <sub>4</sub> -110 <sup>3</sup> / <sub>4</sub> (984-2813)	38 <sup>3</sup> / <sub>4</sub> -134 <sup>3</sup> / <sub>4</sub> (984-3423)	38 <sup>3</sup> / <sub>4</sub> -158 <sup>3</sup> / <sub>4</sub> (984-4032)	38 <sup>3</sup> / <sub>4</sub> -188 <sup>3</sup> / <sub>4</sub> (984-4775)	38 <sup>3</sup> / <sub>4</sub> -206 <sup>3</sup> / <sub>4</sub> (984-5251)
<b>HOA: Height Overall</b>	in (mm)	130 <sup>3</sup> / <sub>4</sub> (3321)	154 <sup>3</sup> / <sub>4</sub> (3931)	178 <sup>3</sup> / <sub>4</sub> (4540)	208 <sup>3</sup> / <sub>4</sub> (5283)	226 <sup>3</sup> / <sub>4</sub> (5759)
<b>DIA: Baseplate Dia.</b>	in (mm)	110 (2794)	134 (3404)	134 (3404)	158 (4013)	158 (4013)
<b>LR: Powered Kingpin</b>	in (mm)	44-116 (1118-2946)	44-140 (1118-3556)	44-164 (1118-4166)	44-188 (1118-4775)	44-212 (1118-5385)
<b>HOA: Height Overall</b>	in (mm)	136 (3454)	160 (3454)	184 (4674)	208 (5283)	232 (5893)
<b>WOA: Width Overall</b>	in (mm)	72 (1829)	72 (1829)	72 (1829)	72 (1829)	72 (1829)
<b>LOA: Length Overall</b>	in (mm)	72 (1829)	72 (1829)	72 (1829)	72 (1829)	72 (1829)
<b>LR: Car</b>	in (mm)	46 <sup>1</sup> / <sub>8</sub> -118 <sup>1</sup> / <sub>8</sub> (1171-3000)	46 <sup>1</sup> / <sub>8</sub> -142 <sup>1</sup> / <sub>8</sub> (1171-3610)	46 <sup>1</sup> / <sub>8</sub> -166 <sup>1</sup> / <sub>8</sub> (1171-4219)	46 <sup>1</sup> / <sub>8</sub> -190 <sup>1</sup> / <sub>8</sub> (1171-4829)	46 <sup>1</sup> / <sub>8</sub> -214 <sup>1</sup> / <sub>8</sub> (1171-5439)
<b>HOA: Height Overall</b>	in (mm)	138 <sup>1</sup> / <sub>8</sub> (3508)	162 <sup>1</sup> / <sub>8</sub> (4118)	186 <sup>1</sup> / <sub>8</sub> (4727)	210 <sup>1</sup> / <sub>8</sub> (5337)	234 <sup>1</sup> / <sub>8</sub> (5947)
<b>WOA: Width Overall</b>	in (mm)	74 <sup>1</sup> / <sub>8</sub> (1883)	74 <sup>1</sup> / <sub>8</sub> (1883)	74 <sup>1</sup> / <sub>8</sub> (1883)	74 <sup>1</sup> / <sub>8</sub> (1883)	74 <sup>1</sup> / <sub>8</sub> (1883)
<b>LOA: Length Overall</b>	in (mm)	102 (2591)	102 (2591)	102 (2591)	102 (2591)	102 (2591)
<b>LR: Car-Kingpin</b>	in (mm)	48 <sup>1</sup> / <sub>4</sub> -120 <sup>1</sup> / <sub>4</sub> (1225-3054)	48 <sup>1</sup> / <sub>4</sub> -144 <sup>1</sup> / <sub>4</sub> (1225-3664)	48 <sup>1</sup> / <sub>4</sub> -168 <sup>1</sup> / <sub>4</sub> (1225-4273)	48 <sup>1</sup> / <sub>4</sub> -192 <sup>1</sup> / <sub>4</sub> (1225-4883)	48 <sup>1</sup> / <sub>4</sub> -216 <sup>1</sup> / <sub>4</sub> (1225-5493)
<b>HOA: Height Overall</b>	in (mm)	140 <sup>1</sup> / <sub>4</sub> (3562)	140 <sup>1</sup> / <sub>4</sub> (4172)	188 <sup>1</sup> / <sub>4</sub> (4781)	212 <sup>1</sup> / <sub>4</sub> (5391)	236 <sup>1</sup> / <sub>4</sub> (6001)
<b>WOA: Width Overall</b>	in (mm)	74 <sup>1</sup> / <sub>8</sub> (1883)	74 <sup>1</sup> / <sub>8</sub> (1883)	74 <sup>1</sup> / <sub>8</sub> (1883)	74 <sup>1</sup> / <sub>8</sub> (1883)	74 <sup>1</sup> / <sub>8</sub> (1883)
<b>LOA: Length Overall</b>	in (mm)	102 (2591)	102 (2591)	102 (2591)	102 (2591)	102 (2591)



## KOIKE ARONSON, INC.

Web Site Address: [www.koike.com](http://www.koike.com)

### Main Office:

635 W. Main St., Arcade, New York 14009  
Phone (585) 492-2400  
Fax (585) 457-3517 (585) 492-5209

### Southern Regional Office:

1285 North Post Oak, Suite 150, Houston, TX 77055  
Phone (713) 682-9645  
Fax (713) 957-4852

Sold By: