

SCARAB-II

Welding Head Manipulator

The Scarab-II series manipulators are designed with a heavy construction to assure stability when welding larger objects. There are five sizes up to 20 foot by 20 foot, and load ratings can be accommodated up to 2200 pounds.

The wide variety of available accessories and durable design of these welding head manipulators make these machines both extremely safe and versatile.



Scarab-II heavily equipped for overlaying power generation components.

Features

- Gear elevated welding for load capacities up to 2200 pounds
- Five sizes up to 20' x 20'
- Application versatility with a variety of accessories including Kingpin-Base and Outrigger, Kingpin-Car and Track, Portable Kingpin-Base, etc.

Power and Speed Options

Reach: VRA: 100-3.3 ipm (2540-84mm/pm) Variable Reach, 30:1 SRC DC 1/2 hp
 VRB: 100-1.7 ipm (2540-43 mm/pm) Variable Reach, 60:1 SRC DC 1/2 hp
 CR: 100 ipm (2540 mm/pm) Constant Reach, 1/2 hp Brakemotor
 MR: Manual Handcrank Reach, no power

Lift: VL: 30-1 ipm (813-25 mm/pm) Variable Lift, 1 hp DC Motor
 CL: 30 ipm (762 mm/pm) Constant Lift, 1 hp Brakemotor
 ML: Manual Handcrank Lift, no power

Kingpin: VK: .2-.007 RPM Variable Rotation, 1 hp DC Motor
 CK: .2 RPM Constant Rotation, 1 hp DC Motor
 MK: Manual Rotation, Wrench-locked

Car: VT: 100-3.3 ipm (2540-84 mm/pm) Variable Traverse, 1 hp DC Motor
 CT: 100 ipm (2540 mm/pm) Constant Traverse, 1 hp Brakemotor
 MT: Manual Traverse, Wrench-locked

Note: Variable Speed Options have Rapid Traverse and Inching features.



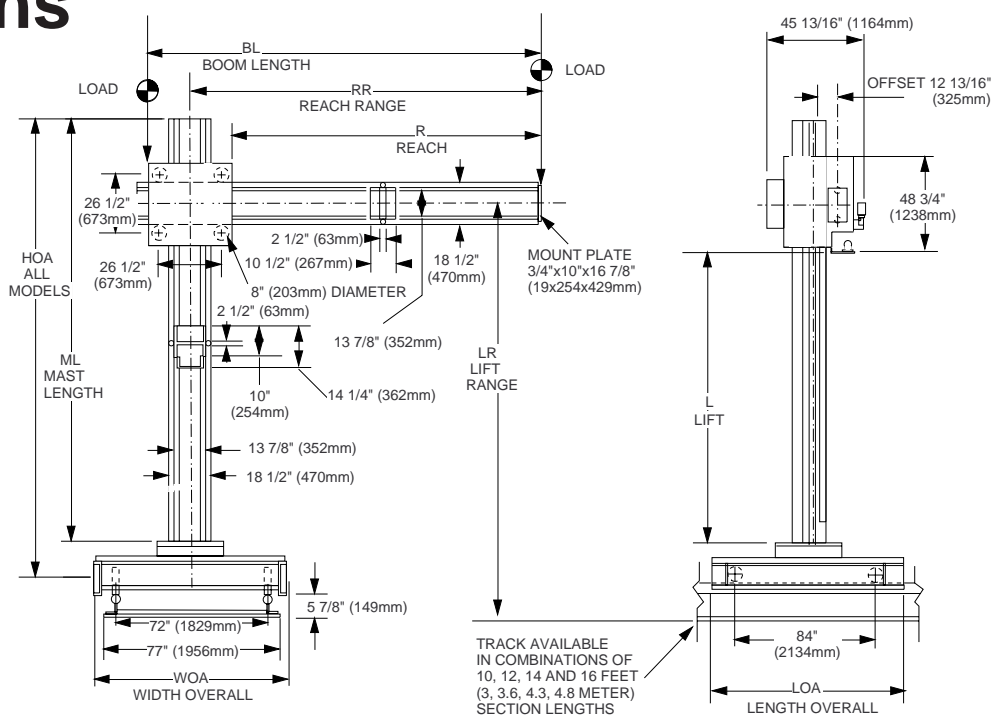
Kingpin Car and Track with cable carrier options.



KOIKE ARONSON, INC.

P.O. Box 307, Arcade, New York 14009
 Phone (585) 492-2400 FAX (585) 457-3517

Specifications



SCARAB-II

SPECIFICATIONS		12 x 12	14 x 14	16 x 16	18 x 18	20 x 20
Load Capacity:	lb (kg)	2200 (998)	1900 (861)	1600 (726)	1300 (590)	1000 (453)
R: Reach, Travel:	ft (m)	12 (3.6)	14 (4.3)	16 (4.9)	18 (5.5)	20 (6)
BL: Boom Length	in (mm)	186 1/2 (4737)	210 1/2 (5347)	234 1/2 (5956)	258 1/2 (6566)	282 1/2 (7175)
RR: Reach, Range	in (mm)	21 1/4-165 1/4 (540-4197)	21 1/4-189 1/4 (540-4807)	21 1/4-213 1/4 (540-5416)	21 1/4-237 1/4 (540-6026)	21 1/4-261 1/4 (540-6636)
L: Lift, Travel	ft (m)	12 (3.6)	14 (4.3)	16 (4.9)	18 (5.5)	20 (6)
ML: Mast Length	in (mm)	199 (5055)	223 (5664)	247 (6274)	271 (6883)	295 (7493)
LR: Lift, Range (below)						
LR: Stationary Base	in (mm)	32-176 (813-4470)	32-200 (813-5080)	32-224 (813-5690)	32-248 (813-6299)	32-272 (813-6909)
HOA: Height Overall	in (mm)	199 (5055)	223 (5664)	247 (6274)	271 (6883)	295 (7493)
DIA: Baseplate Dia.	in (mm)	32 (813)	32 (813)	32 (813)	32 (813)	32 (813)
LR: Kingpin	in (mm)	50 5/16-194 5/16 (1278-4935)	50 5/16-218 5/16 (1278-5545)	50 5/16-242 5/16 (1278-6155)	50 5/16-266 5/16 (1278-6764)	50 5/16-290 5/16 (1278-7374)
HOA: Height Overall	in (mm)	217 5/16 (5520)	241 5/16 (6129)	265 5/16 (6739)	289 5/16 (7348)	313 5/16 (7958)
WOA: Width Overall	in (mm)	72 (1829)	72 (1829)	72 (1829)	72 (1829)	72 (1829)
LOA: Length Overall	in (mm)	72 (1829)	72 (1829)	72 (1829)	72 (1829)	72 (1829)
LR: Car	in (mm)	50 5/16-194 5/16 (1278-4943)	50 5/16-218 5/16 (1278-5553)	50 5/16-242 5/16 (1278-6163)	50 5/16-266 5/16 (1278-6772)	50 5/16-290 5/16 (1278-7382)
HOA: Height Overall	in (mm)	217 5/16 (5528)	241 5/16 (6137)	265 5/16 (6747)	289 5/16 (7356)	313 5/16 (7966)
WOA: Width Overall	in (mm)	87 3/4 (2229)	87 3/4 (2229)	87 3/4 (2229)	87 3/4 (2229)	87 3/4 (2229)
LOA: Length Overall	in (mm)	101 (2565)	101 (2565)	101 (2565)	101 (2565)	101 (2565)
LR: Car-Kingpin	in (mm)	57 1/2-201 1/2 (1460-5118)	57 1/2-225 1/2 (1460-5728)	57 1/2-249 1/2 (1460-6337)	57 1/2-273 1/2 (1460-6947)	57 1/2-297 1/2 (1460-7556)
HOA: Height Overall	in (mm)	224 1/2 (5702)	248 1/2 (6312)	272 1/2 (6921)	296 1/2 (7571)	320 1/2 (8141)
WOA: Width Overall	in (mm)	87 3/4 (2229)	87 3/4 (2229)	87 3/4 (2229)	87 3/4 (2229)	87 3/4 (2229)
LOA: Length Overall	in (mm)	101 (2565)	101 (2565)	101 (2565)	101 (2565)	101 (2565)



KOIKE ARONSON, INC.

Web Site Address: www.koike.com

Main Office:

635 W. Main St., Arcade, New York 14009
 Phone (585) 492-2400
 Fax (585) 457-3517 (585) 492-5209

Southern Regional Office:

1285 North Post Oak, Suite 150, Houston, TX 77055
 Phone (713) 682-9645
 Fax (713) 957-4852

Sold By: