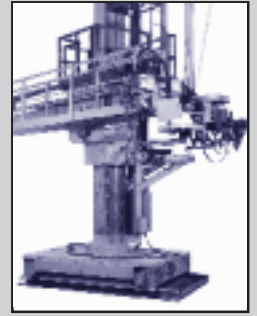
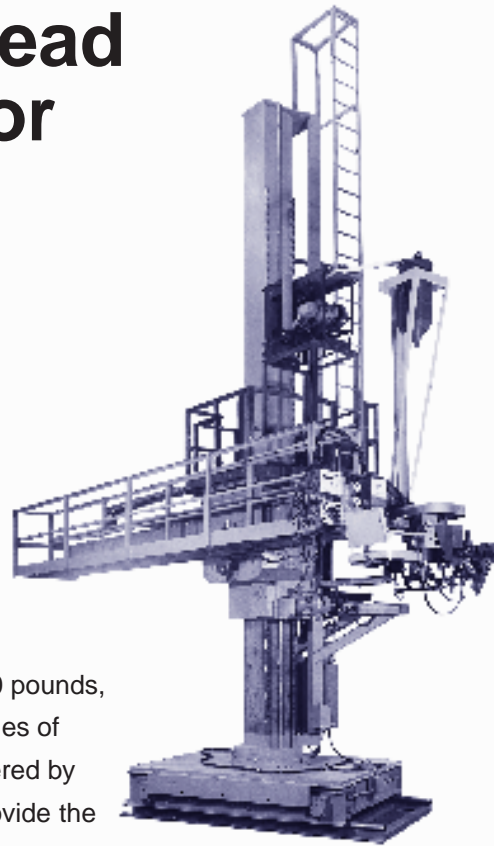


SCARAB-III

Welding Head Manipulator



Scarab-III fully equipped to carry operator and Sub-Arc system for welding girth and longitudinal seams on extremely long, large diameter vessels.

With load capacities up to 3000 pounds, the Scarab-III is the largest series of welding head manipulators offered by Koike Aronson. These units provide the most horizontal and vertical arc traverse for welding the largest of workpieces. The Scarab-III series is fully equipped to safely carry and accommodate operators.

Features

- Automatic welding for your largest workpieces up to 30 x 30 size. Additional traverse available.
- Application versatility with a variety of accessories including Kingpin-Base and Outrigger, Kingpin-Car and Track, Ladders, Walkways, Equipment Towers, Seats, etc.

Power and Speed Options

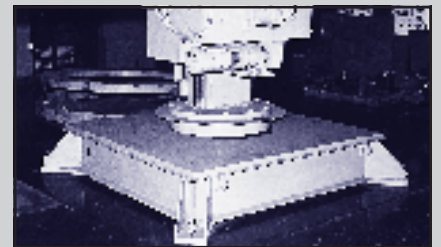
Reach: VRA: 100-3.3 ipm (2540-84mm/pm) Variable Reach, 30:1 SCR DC 1/3 hp
 VRB: 100-1.7 ipm (2540-43 mm/pm) Variable Reach, 60:1 SRC DC 1/3 hp
 CR: 100 ipm (2540 mm/pm) Constant Reach, 1/4 hp Brakemotor
 MR: Manual Handcrank Reach, no power

Lift: VL: 27-.9 ipm (686-23 mm/pm) Variable Lift, 7 1/2 hp DC Motor
 CL: 27 ipm (686 mm/pm) Constant Lift, 7 1/2 hp Brakemotor
 ML: Manual Handcrank Lift, no power

Kingpin: VK: .2-.007 RPM Variable Rotation, 1 hp DC Motor
 CK: .2 RPM Constant Rotation, 1 hp DC Motor
 MK: Manual Rotation, Wrench-locked

Car: VT: 100-3.3 ipm (2540-84 mm/pm) Variable Traverse, 2 hp DC Motor
 CT: 100 ipm (2540 mm/pm) Constant Traverse, 2 hp Brakemotor
 MT: Manual Traverse, Wrench-locked

Note: Variable Speed Options have Rapid Traverse and Inching features.



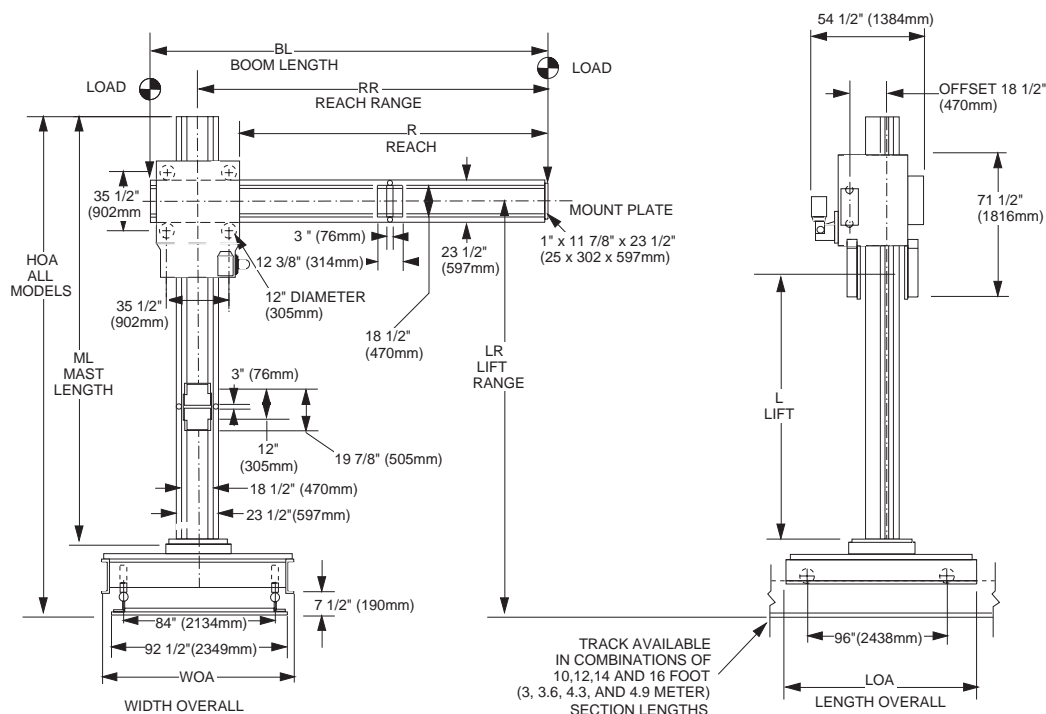
Kingpin Base and Outrigger options.



KOIKE ARONSON, INC.

P.O. Box 307, Arcade, New York 14009
 Phone (585) 492-2400 FAX (585) 457-3517

Specifications



SCARAB-III

Inches (millimeters), unless noted otherwise.

SPECIFICATIONS	20 x 20	22 x 22	24 x 24	26 x 26	28 x 28	30 x 30
Load Capacity: lbs (kg)	3000 (1361)	2600 (1179)	2200 (998)	1800 (816)	1400 (635)	1000 (453)
R: Reach, Travel: ft (m)	20 (6)	22 (6.7)	24 (7.3)	26 (7.9)	28 (8.5)	30' (9.1)
BL: Boom Length: in (mm)	297 (7544)	321 (8153)	345 (8763)	369 (9373)	393 (9982)	417 (10592)
RR: Reach, Range: (mm)	28.5-268.5 (724-6820)	28.5-292.5 (724-7429)	28.5-316.5 (724-8039)	28.5-340.5 (724-8649)	28.5-364.5 (724-9258)	28.5-388.5 (724-9868)
L: Lift, Travel: ft (m)	20 (6)	22 (6.7)	24 (7.3)	26 (7.9)	28 (8.5)	30 (9.1)
ML: Mast Length: (mm)	317 ³ / ₈ (8061)	341 ³ / ₈ (8671)	365 ³ / ₈ (9280)	389 ³ / ₈ (9890)	413 ³ / ₈ (10500)	437 ³ / ₈ (11109)
LR: Lift, Range: (below)						
LR: Stationary Base: (mm)	50-290 (1270-7366)	50-314 (1270-7976)	50-338 (1270-8585)	50-362 (1270-9195)	50-386 (1270-9804)	50-410 (1270-10414)
HOA: Height Overall: (mm)	317 ³ / ₈ (8061)	341 ³ / ₈ (8671)	365 ³ / ₈ (9280)	389 ³ / ₈ (9890)	413 ³ / ₈ (10500)	437 ³ / ₈ (11109)
DIA: Baseplate Dia.: (mm)	38 (965)	38 (965)	38 (965)	38 (965)	38 (965)	38 (965)
LR: Kingpin: (mm)	70 ³ / ₄ -310 ³ / ₄ (1797-7893)	70 ³ / ₄ -334 ³ / ₄ (1797-8503)	70 ³ / ₄ -358 ³ / ₄ (1797-9112)	70 ³ / ₄ -382 ³ / ₄ (1797-9722)	70 ³ / ₄ -406 ³ / ₄ (1797-10331)	70 ³ / ₄ -430 ³ / ₄ (1797-10941)
HOA: Height Overall: (mm)	337 ¹¹ / ₁₆ (8577)	361 ¹¹ / ₁₆ (9187)	385 ¹¹ / ₁₆ (9796)	409 ¹¹ / ₁₆ (10406)	433 ¹¹ / ₁₆ (11016)	457 ¹¹ / ₁₆ (11625)
WOA: Width Overall: (mm)	84 (2134)	84 (2134)	84 (2134)	84 (2134)	84 (2134)	84 (2134)
LOA: Length Overall: (mm)	84 (2134)	84 (2134)	84 (2134)	84 (2134)	84 (2134)	84 (2134)
LR: Car: (mm)	76 ¹ / ₂ -316 ¹ / ₂ (1943-8039)	76 ¹ / ₂ -340 ¹ / ₂ (1943-8649)	76 ¹ / ₂ -364 ¹ / ₂ (1943-9258)	76 ¹ / ₂ -388 ¹ / ₂ (1943-9868)	76 ¹ / ₂ -412 ¹ / ₂ (1943-10477)	76 ¹ / ₂ -436 ¹ / ₂ (1943-11087)
HOA: Height Overall: (mm)	343 ⁷ / ₈ (8734)	367 ⁷ / ₈ (9344)	391 ⁷ / ₈ (9954)	415 ⁷ / ₈ (10563)	439 ⁷ / ₈ (11173)	463 ⁷ / ₈ (11783)
WOA: Width Overall: (mm)	100 (2540)	100 (2540)	100 (2540)	100 (2540)	100 (2540)	100 (2540)
LOA: Length Overall: (mm)	120 (3048)	120 (3048)	120 (3048)	120 (3048)	120 (3048)	120 (3048)
LR: Car-Kingpin: (mm)	82 ³ / ₄ -322 ³ / ₄ (2102-8148)	82 ³ / ₄ -346 ³ / ₄ (2102-8807)	82 ³ / ₄ -370 ³ / ₄ (2102-9417)	82 ³ / ₄ -394 ³ / ₄ (2102-10027)	82 ³ / ₄ -418 ³ / ₄ (2102-10636)	82 ³ / ₄ -442 ³ / ₄ (2102-11246)
HOA: Height Overall: (mm)	350 ¹ / ₄ (8896)	374 ¹ / ₄ (9506)	398 ¹ / ₄ (10115)	422 ¹ / ₄ (10725)	446 ¹ / ₄ (11335)	470 ¹ / ₄ (11944)
WOA: Width Overall: (mm)	100 (2540)	100 (2540)	100 (2540)	100 (2540)	100 (2540)	100 (2540)
LOA: Length Overall: (mm)	120 (3048)	120 (3048)	120 (3048)	120 (3048)	120 (3048)	120 (3048)



KOIKE ARONSON, INC.

Web Site Address: www.koike.com

Main Office:

635 W. Main St., Arcade, New York 14009
 Phone (585) 492-2400
 Fax (585) 457-3517 (585) 492-5209

Southern Regional Office:

1285 North Post Oak, Suite 150, Houston, TX 77055
 Phone (713) 682-9645
 Fax (713) 957-4852

Sold By: