

# TR Series

## Tilting Turning Rolls

### Power Tilting for Operations from Horizontal to 45°

#### Tilting Turning Rolls

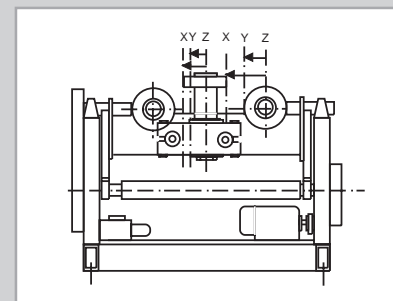
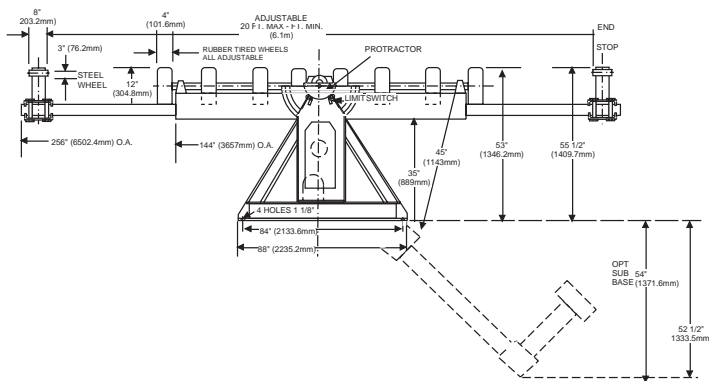
can be used to rotate cylindrical vessels in the horizontal position or tilted up to 45° to either side. When operating these positioners at an angle, end stops should be attached to the frame ends to prevent slippage of vessel. Precise elevation can be determined from the side mounted Koike Aronson protractor. At any given angle, the adjustable trigger can be set to stop movement at a precise elevation.



The versatile Tilting Turning Rolls can be used in a variety of positions from horizontal to full tilt in either direction at 45 degrees.

### Adjustments

- For Tanks 33" to 72" Diameter: Idler Axle and End Stops at Z
- For Tanks 24" to 65" Diameter: Idler Axle and End Stops at Y
- For Tanks 15" to 42" Diameter: Idler Axle and End Stops at X
- WRU30PT has double set of positions for range to 13' dia.



| SPECIFICATIONS           | WRU3PT                         | WRU5PT                        | WRU10PT                         | WRU20PT                         | WRU30PT                        |
|--------------------------|--------------------------------|-------------------------------|---------------------------------|---------------------------------|--------------------------------|
| Load Cap @ Max. Dia.     | 3000 lbs (1361 kg)             | 5000 lbs (2268 kg)            | 10,000 lbs (4536 kg)            | 20,000 lbs (9072 kg)            | 30,000 lbs (13,608 kg)         |
| Diameter Range           | 6" to 54"<br>(152mm to 1372mm) | 3" to 72"<br>(76mm to 1829mm) | 15" to 72"<br>(381mm to 1829mm) | 15" to 72"<br>(381mm to 1829mm) | 4" to 13'<br>(102mm to 3962mm) |
| Length Range (Max.)      | 8' (2.4mm)                     | 20' (6.1mm)                   | 20' (6.1mm)                     | 20' (6.1mm)                     | 25' (7.6mm)                    |
| Tire Size, In. (No.)     | 12 x 4 (4)                     | 12 x 4 (6)                    | 12 x 4 (8)                      | 12 x 4 (16)                     | 16 x 4 (12)                    |
| Tire Size, (mm)          | (305 x 102)                    | (305 x 102)                   | (305 x 102)                     | (305 x 102)                     | (406 x 102)                    |
| Adjustable Taper-Lock    | Yes                            | Yes                           | Yes                             | Yes                             | Yes                            |
| Speed, IPM (mm/min)      | 48 - 1.6 (1219 - 41)           | 50 - 2 (1270 - 51)            | 50 - 2 (1270 - 51)              | 50 - 2 (1270 - 51)              | 50 - 2 (1270 - 51)             |
| Tractive Pull            | 1200 lbs (544mm)               | 1800 lbs (816mm)              | 1800 lbs (816mm)                | 1800 lbs (816mm)                | 3000 lbs (816mm)               |
| HP, 30:1 SCR DC          | 1/2                            | 3/4                           | 3/4                             | 3/4                             | 1-1/2                          |
| Tilt Each Way            | 45°                            | 45°                           | 45°                             | 45°                             | 45°                            |
| Tilt Time for 45°        | 16 sec.                        | 21 sec.                       | 21 sec.                         | 21 sec.                         | 50 sec.                        |
| Tilt HP (Magnetic Brake) | 3/4                            | 3                             | 5                               | 7-1/2                           | 7-1/2                          |



## KOIKE ARONSON, INC.

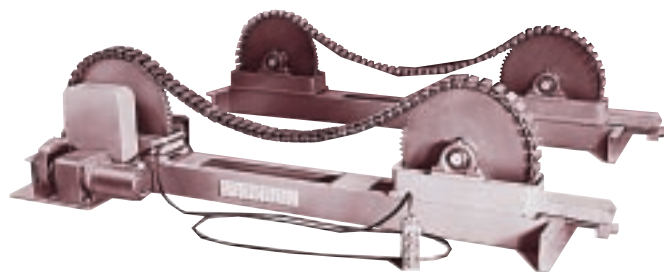
P.O. Box 307, Arcade, New York 14009  
Phone (585) 492-2400 FAX (585) 457-3517

# TR Series

## Trac-Tred<sup>®</sup> Turning Rolls



Trac-Tred turning rolls insure the most delicate care for thin walled vessels.

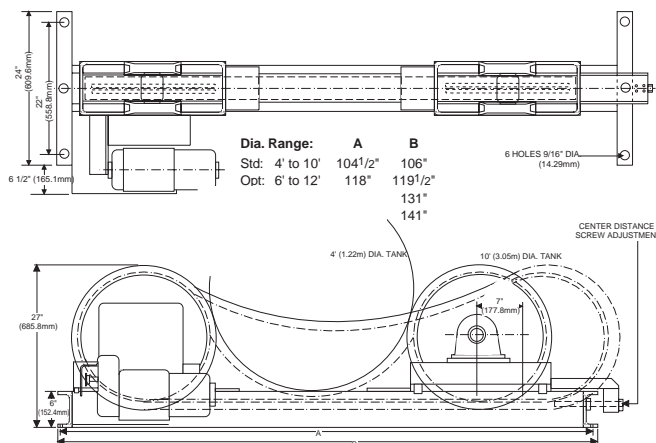
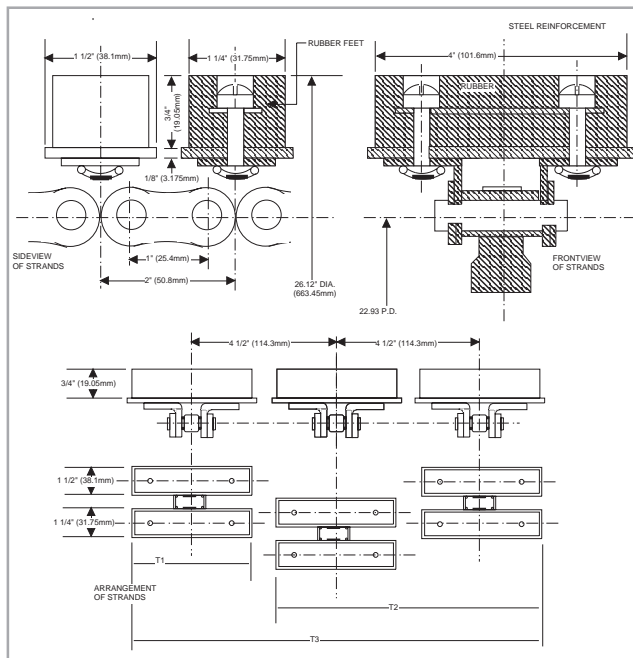


### Precision Rotation of Thin Walled Vessels



Koike Aronson's Trac-Tred<sup>®</sup> Turning Rolls provide the solution for safely turning thin walled or precious surfaced cylindrical pieces without

marring, wrinkling, or indenting. The patented Trac-Tred<sup>®</sup> system allows for steady, precise rotation of vessels from 4' to 10' standard, and up to 16' optional. Capacities range up to 18,000 pounds.



## KOIKE ARONSON, INC.

### Main Office:

635 W. Main St., Arcade, New York 14009  
 Phone (585) 492-2400  
 Fax (585) 457-3517 (585) 492-5209

### Southern Regional Office:

1285 North Post Oak, Suite 150, Houston, TX 77055  
 Phone (713) 682-9645 Fax (713) 957-4852

### Web Site Address:

www.koike.com

**Sold By:**