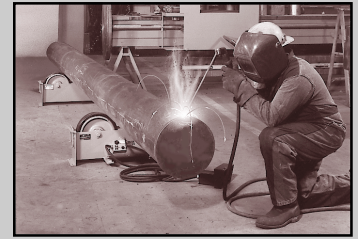
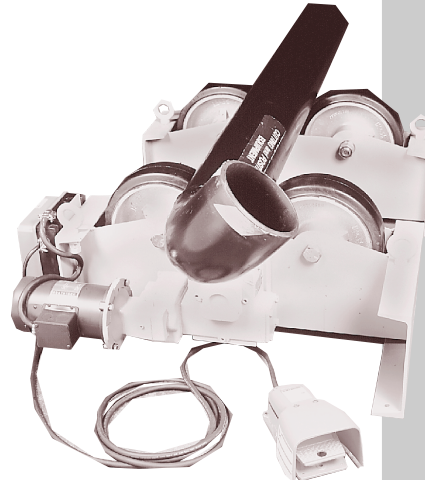


TR Series

Portable Pipe Rolls

Easily carried to the work site . . .

PRD and PRI rubber tired Driver and Idler Pipe Rolls are lightweight, portable rolls that can easily be carried and set up at the work site. Despite their compact size, 1 driver and 2 idlers have a capacity of up to 4 1/2 tons.



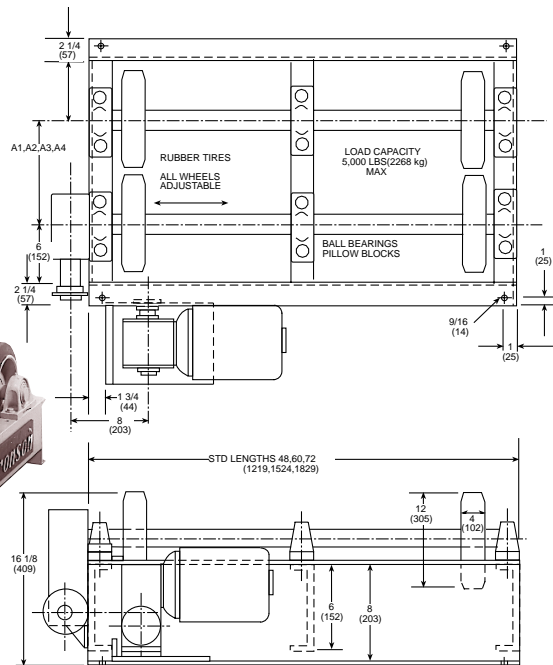
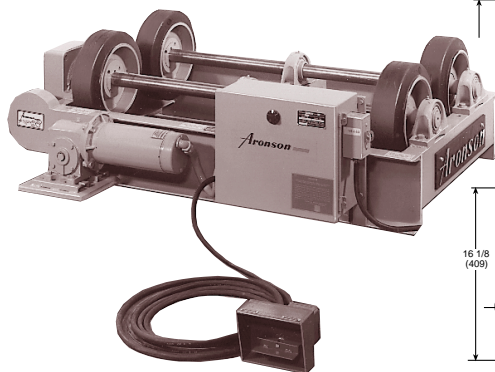
Koike Aronson's versatile portable pipe rolls can easily be set up just about anywhere in the factory.



SDAW - Small diameter auxiliary wheel for diameters from 1 1/2" to 3 1/2".

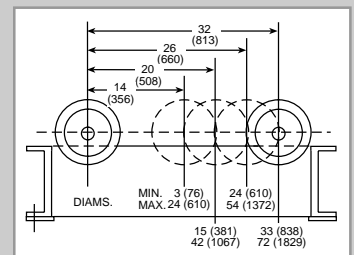
MODEL	CAPACITY WEIGHT	DESCRIPTION	SHIPPING WEIGHT
PRD 3 Rubber Tired Driver Turning Roll	3,000 lbs (1361 kg)	3 1/2" (90mm) to 40" (1016mm) diameter range with fixed C-D setting. 40-1.4 IPM, 1/3 hp 30:1 SCR DC Drive; 1-Turn pot in cabinet, On-Off foot switch on 12' (3.6m) cable, 9' (2.7m) extension cord. 115/1/60 operation. 1 tire 12" (305mm) x 3 1/2 (90mm), anti-friction bearings each axle.	250 lbs (113 kg)
PRI 3 Rubber Tired Idler Turning Roll	3,000 lbs (1361 kg)	Same as PRD 3, but not powered. Capacity: 1 Driver, 1 Idler - 3 tons (2721kg); 1 Driver, 2 Idlers - 4 1/2 tons (4082kg).	120 lbs (54 kg)

WPR Pipe Rolls



Model 51-48

- Load capacity: 5000 lbs (2268 kg)
- Diameter Range: 3" to 24" (76 to 610mm)
- 1 Center-distance setting, 48" (1219 mm) Frame
- 50-2 IPM @ 1200 lbs (544kg) Tractive Pull
- 1/2 hp 30:1 SCR DC with Dynamic Brake
- 4 Tires, 2/Axle, 12" x 4" (305 x 102mm), Taper Lock Hubs
- Single-phase 115/1/60 20' (M) Remote Foot Switch



- Other C-D and Frame Lengths available



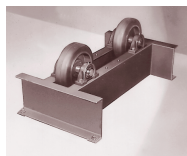
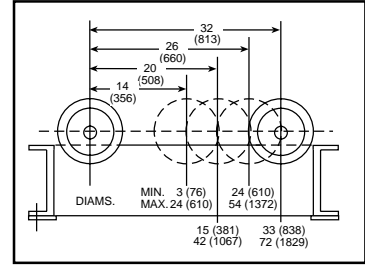
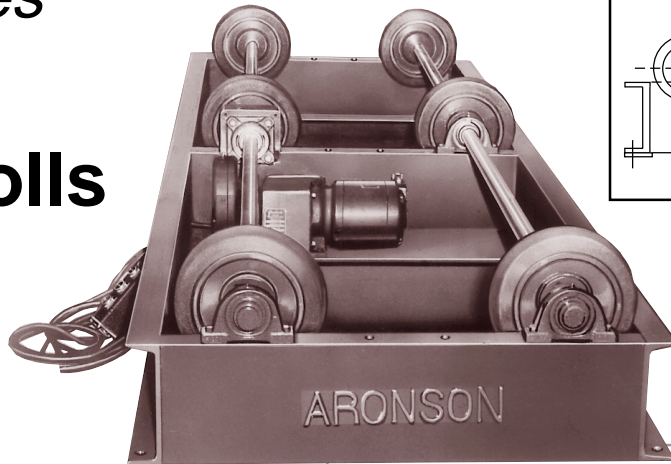
KOIKE ARONSON, INC.

P.O. Box 307, Arcade, New York 14009
Phone (585) 492-2400 FAX (585) 457-3517

TR Series

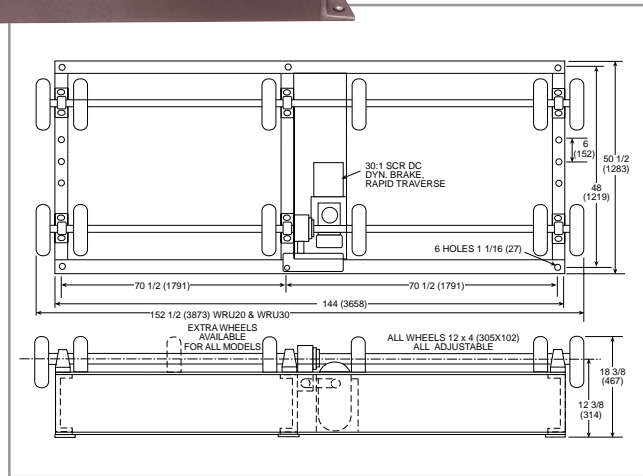
WRU Unit Turning Rolls

Wheels with Taper Lock Hubs can be Located Anywhere



Koike Aronson's WRU Unit Frame Turning Rolls provide the solution for safely turning heavy cylindrical

pieces without marring, wrinkling, or indenting. The WRU system has a capacity range from 5,000 to 30,000 pounds. W12 x 4R wheels have Taper-lock hubs which require no keyways in the axles.



SPECIFICATIONS	Model WRU 5	Model WRU 10	Model WRU 20	Model WRU 30
Load Capacity	5,000 lbs (2268 kg)	10,000 lbs (4536 kg)	20,000 (9072)	30,000 (13,608)
Diameter, Maximum	6 feet (1.8 meters)	6 feet (1.8 meters)	6 feet (1.8 meters)	13 feet (3.9 meters)
Diameter, Minimum	3 inches (76 mm)	3 inches (76 mm)	3 inches (76 mm)	4 inches (102 mm)
Maximum Work Length	20 feet (6.1 meters)	20 feet (6.1 meters)	20 feet (6.1 meters)	25 feet (7.6 meters)
Minimum Work Length	no limit	no limit	no limit	no limit
Speed Range, IPM	50 - 2 (1270 - 51 mm)	50 - 2 (1270 - 51 mm)	50 - 2 (1270 - 51 mm)	50 - 2 (1270 - 51 mm)
Tractive Pull, lbs (kg)	1,800 lbs (816 kg)	1,800 lbs (816 kg)	1,800 lbs (816 kg)	3,000 lbs (1361 kg)
HP, 30:1 SCR DC	3/4	3/4	3/4	1 1/2
Tire Size in (mm) & [No.]	12 x 4 (305 x 102) [6]	12 x 4 (305 x 102) [8]	12 x 4 (305 x 102) [12]	16 x 4 (406 x 102) [12]
All Adjustable	yes	yes	yes	yes
Width Over All	50 1/2 in (1282 mm)	50 1/2 in (1282 mm)	50 1/2 in (1282 mm)	82 in (2082 mm)
Length Overall	144 in (3658 mm)	144 in (3658 mm)	152 1/2 in (3873 mm)	152 1/2 in (3873 mm)
Shipping Weight	1,550 lbs (703 kg)	1,800 lbs (816 kg)	1,950 lbs (884 kg)	6,000 lbs (2721 kg)
Matching Idler	WRUI 3	WRUI 6	WRUI 9	WRUI 12



Visit us at www.koike.com

Main Office:
 635 W. Main St.
 P.O. Box 307
 Arcade, NY 14009
 Phone (585) 492-2400
 Fax (585) 457-3517

Houston Sales Office:
 1285 North Post Oak
 Suite 150
 Houston, TX 77055
 Phone (713) 682-9645
 Fax (713) 957-4852

Sold By: