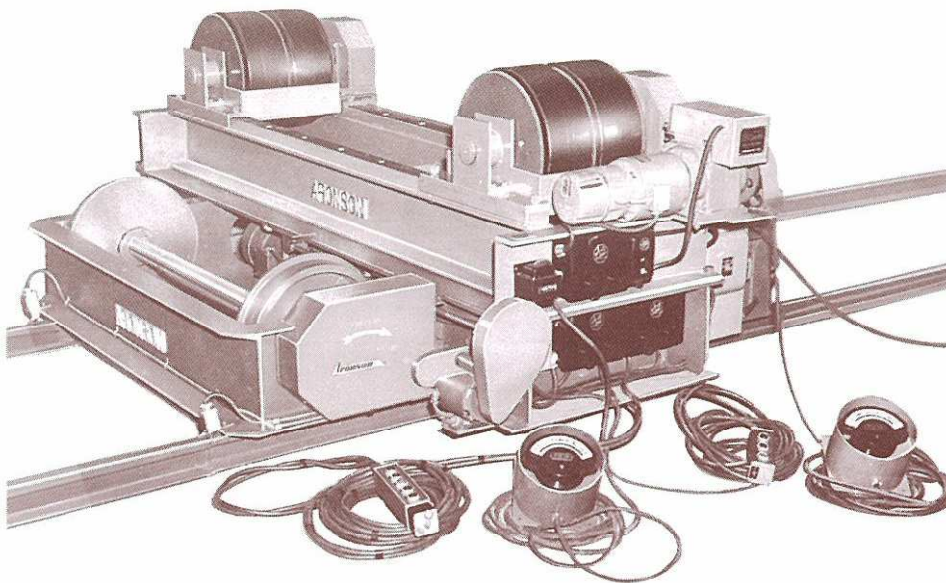
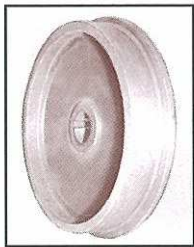


TR Series

Driver and Idler Rail Cars

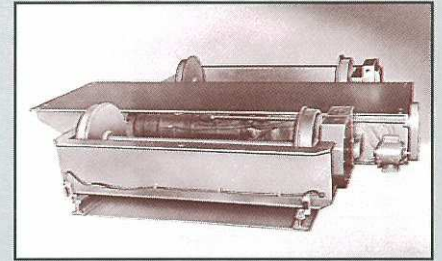


Single setup positioning for both longitudinal and circumferential welds



Koike Aronson rail cars combined with turning rolls make a versatile positioning combination. Long cylindrical weldments can easily be maneuvered both in longitudinal and circumferential directions.

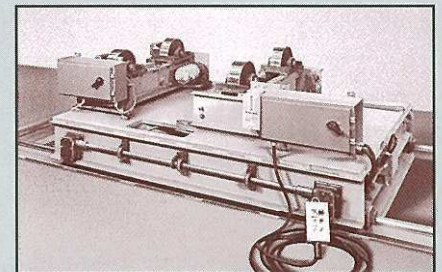
Both rail cars and turning rolls can be used independently for other applications, when required.



Koike Aronson Driver Cars, with their own speed controls are designed to run independently of the turning rolls.

Features

- SCR electronic DC drives which maintain speeds to within 0.5%
- Dynamic braking for quick, smooth, precision stopping
- Customized models available



This Rail Car configuration allows precision travel on specially designed rail track.

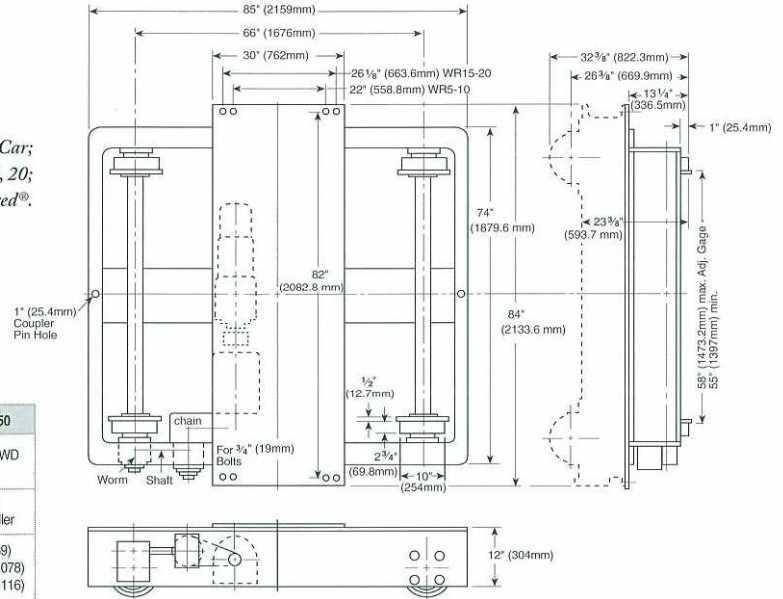


KOIKE ARONSON, INC.

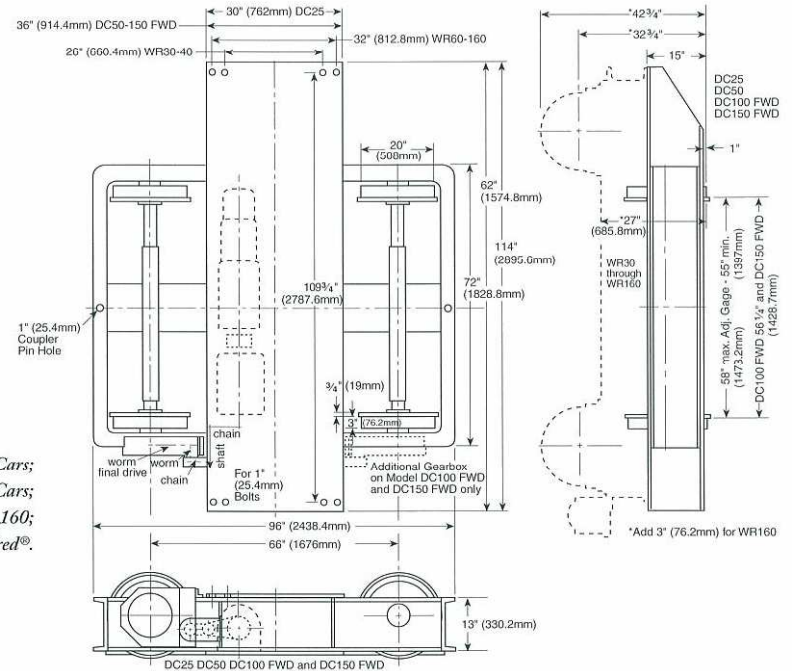
P.O. Box 307, Arcade, New York 14009
Phone (585) 492-2400 FAX (585) 457-3517

Specifications

*DC 10 Driver Car; IC 10 Idler Car;
For Turning Roll Sizes 5, 10, 15, 20;
and all models Trac-Tred®.*



SPECIFICATIONS	Size 10	Size 25	Size 50	Size 100	Size 150
Driver Car Model	DC 10	DC 25	DC50	DC 100FWD	DC 150FWD
Idler Car Model	IC 10	IC 25	IC50	IC 100	IC 150
Cars take these Turning Roll Sizes	5, 10, 15, 20	30, 40	30, 40, 60	Size 120 and Smaller	Size 160 and Smaller
Load Cap. per Car: Tons (kg)	10 (9072)	20 (18,144)	30 (27,215)	60 (54,431)	75 (68,039)
Load - 1 DC, 1 IC: Tons (kg)	20 (18,144)	40 (36,287)	60 (54,431)	120 (108,862)	150 (136,078)
Load - 1 DC, 2 IC: Tons (kg)	30 (27,215)	60 (54,431)	90 (81,647)	180 (163,293)	225 (204,116)
Speed Range: IPM (mm/min)	100 to 3.3 (2540-84)	100 to 3.3 (2540-84)	100 to 2.5 (2540 - 63)	64 to 2.1 (1626 - 53)	64 to 2.1 (1626 - 53)
Drawbar Pull, Lbs (kg)	2,500 (1134)	4,800 (2177)	7,200 (3266)	10,000 (4536)	12,000 (5443)
HP of 30:1 SCR DC	1	2	3	3	5
Flanged Wheel Dia., In (mm)	10 (254)	20 (508)	20 (508)	20 (508)	20 (508)
Standard "T" Rail Gauge: In (mm)	4'- 8 1/2" (1219-216)	4'- 8 1/2" (1219 - 216)	4'- 8 1/2" (1219 - 216)	4'- 8 1/2" (1219 - 216)	4'- 8 1/2" (1219 - 216)



*DC 25, DC 50, DC 100 WRD, DC 150 FWD Driver Cars;
IC 25, IC 50, IC 100, IC 150 Idler Cars;
For Turning Roll Sizes 30, 40, 60, 80, 90, 120, 160;
and all models Trac-Tred®.*



KOIKE ARONSON, INC.

Web Site Address: www.koike.com

Sold By:

Main Office:

635 W. Main St., P.O. Box 307
Arcade, NY 14009
Phone (585) 492-2400 Fax (585) 457-3517

Houston Sales Office:

1285 North Post Oak, Suite 150
Houston, TX 77055
Phone (713) 682-9645 Fax (713) 957-4852