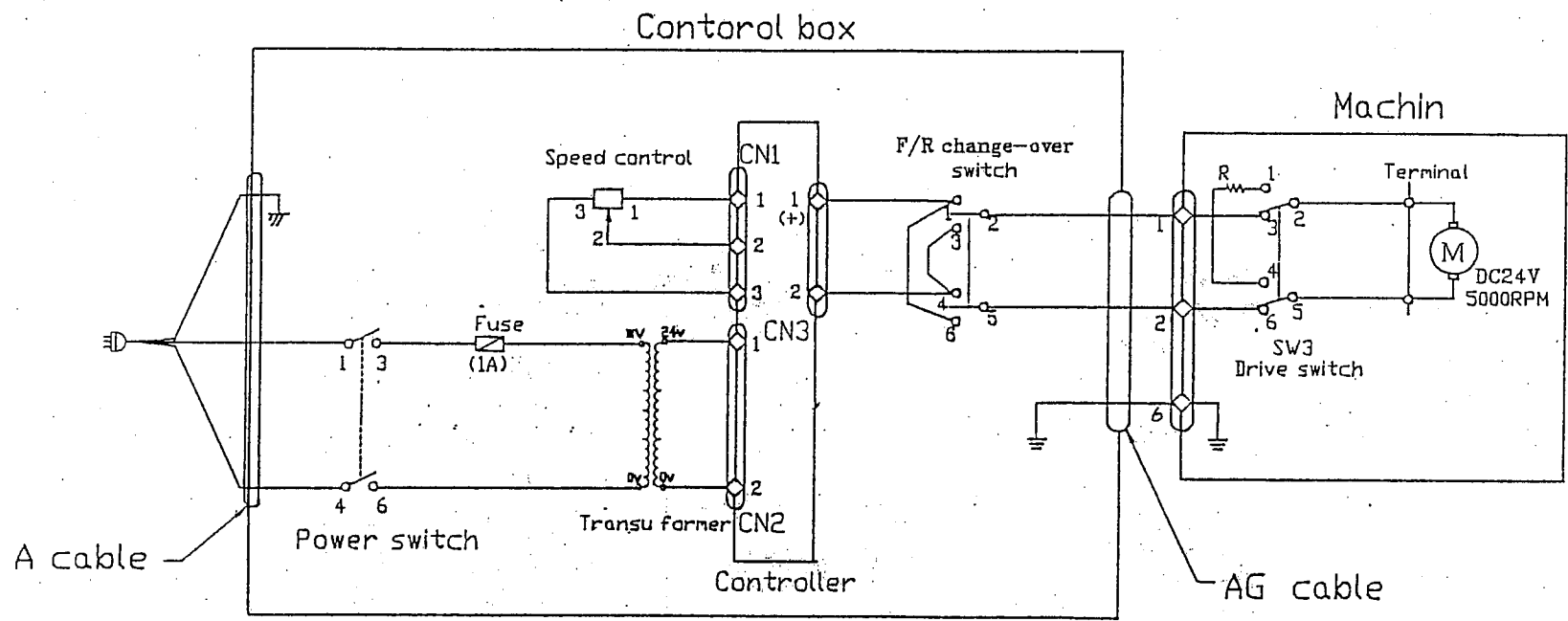
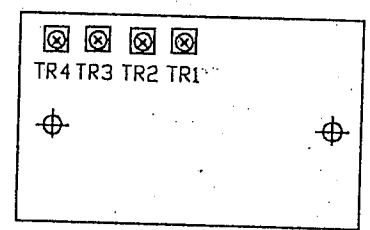


Wiring diagram

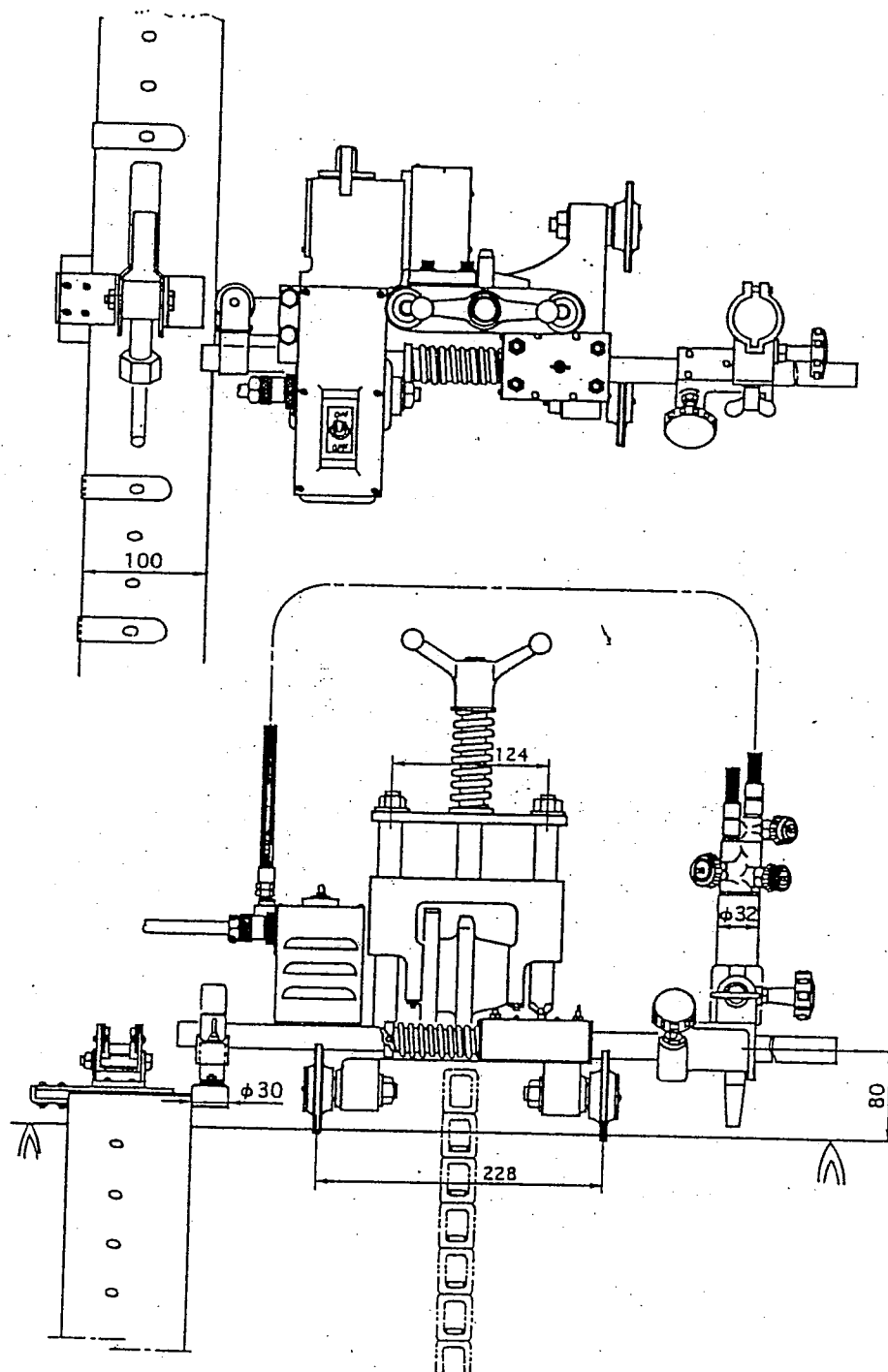


SUPPLY VOLTAGE	TRANSFORMER Connection	
	PRIMARY X Y	SECONDARY
100V	100V	24V
110V	120V	
120V	120V	
200V	220V	
220V	220V	
230V	230V	
240V	240V	
42V	42V	

Controller adjust  
 TR1 : SPEED MAX.  
 TR3 : SPEED MINI.

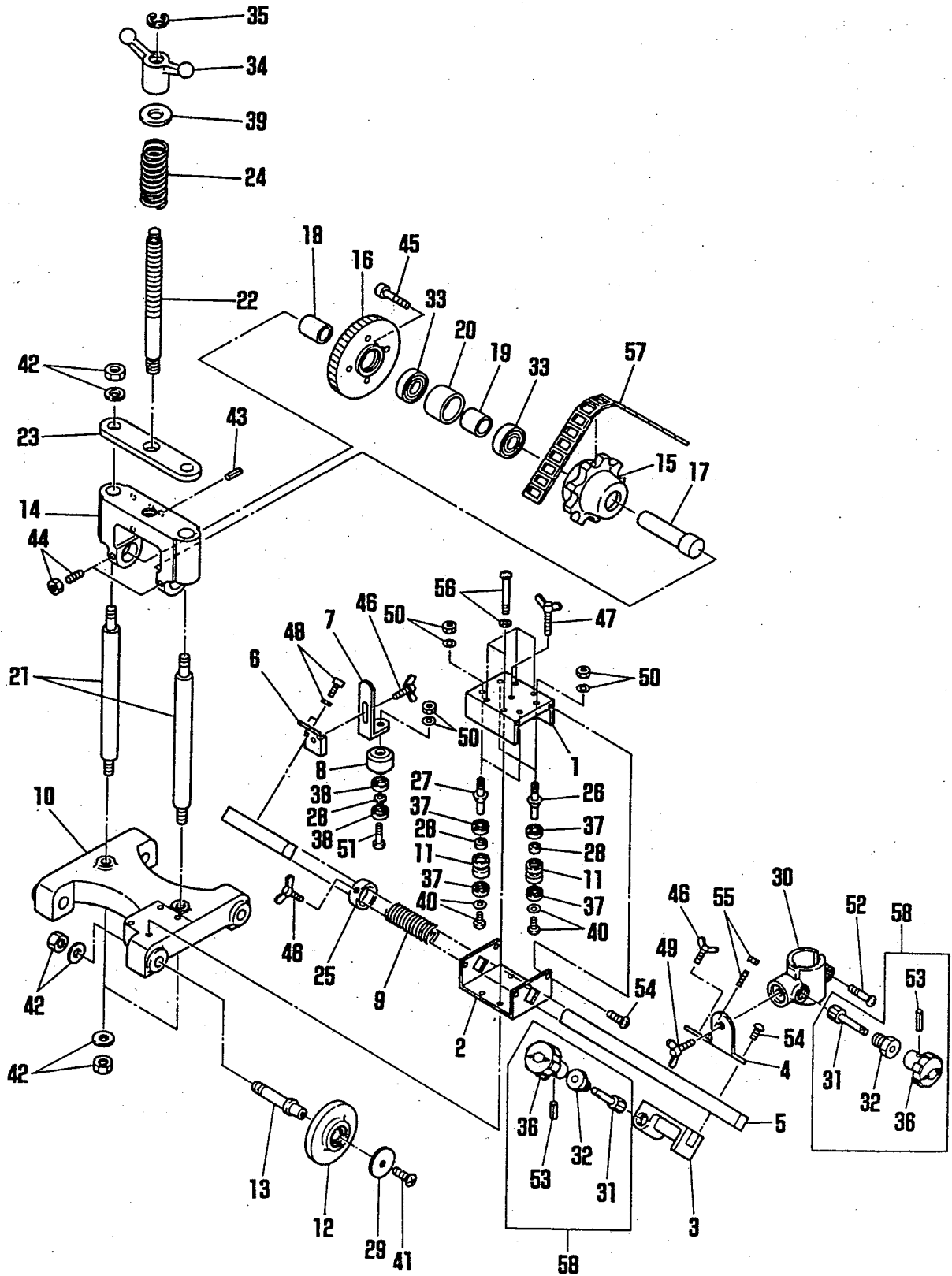


Assembly drawing of AUTO PICLE- II



**Parts list**

**10.1 Body unit**

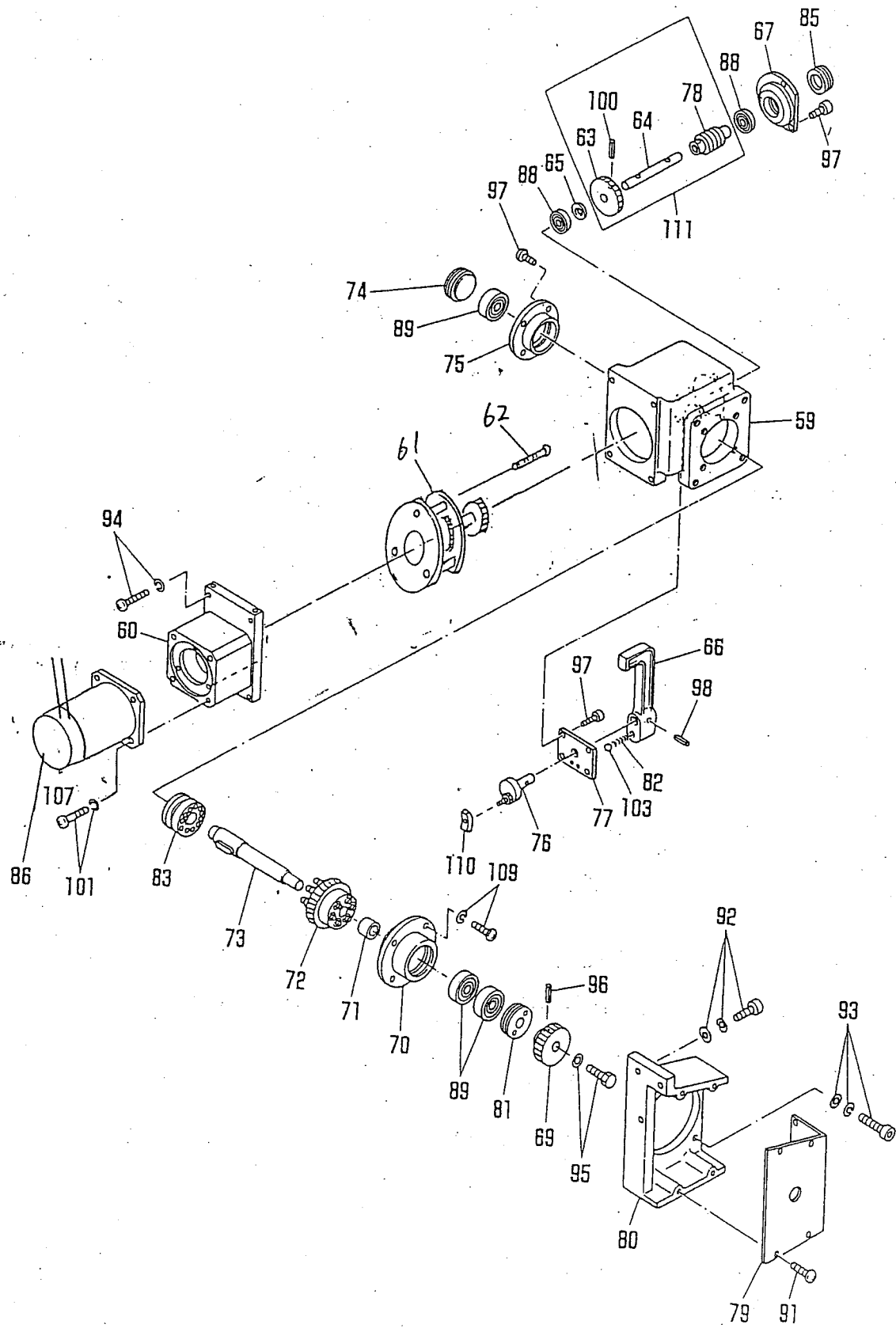


Body unit

ITEM NO.	PART NAME	QTY	STOCK NO.	REMARKS
1	Slide body	1	60032412	
2	Slide body cover	1	60032413	
3	Cross feed body	1	60032414	
4	Torch holder bracket	1	60032415	
5	Slide bar	1	60032416	
6	Guide roller base	1	60032417	
7	Guide roller bracket	1	60032418	
8	Guide roller	1	60032419	
9	Slide spring	1	60032420	
10	Body	1	60032421	
11	Roller	4	60032452	
12	Wheel	4	60031345	
13	Wheel shaft	4	60031346	
14	Slide bracket	1	60031339	
15	Sprocket	1	60031335	
16	Drive gear	1	60031333	
17	Sprocket shaft	1	60031334	
18	Collar(A)	1	60031338	
19	Collar(B)	1	60031336	
20	Collar(C)	1	60031337	
21	Slide shaft	2	60031340	
22	Lift shaft	1	60031341	
23	Upper plate	1	60031342	
24	Spring	1	60031343	
25	Stopper	1	60030912	
26	Side roller shaft(A)	2	60031612	
27	Side roller shaft(B)	2	60031613	
28	Collar	5	60032467	
29	Washer	4	60030667	
30	Torch holder	1	60031842	
31	Pinion(A)	2	60030910	
32	Pinion metal(A)	2	60030909	

ITEM NO.	PART NAME	QTY	STOCK NO.	REMARKS
33	Bearing	2	60030830	6004ZZ
34	Wing handle	1	60031344	
35	Stop ring(E-10)	1	6B540100	E-10
36	Handle	2	60030223	φ 40
37	Bearing	8	60032470	R1560ZZ
38	Bearing	2	60031266	626ZZ
39	Washer(WF-18)	1	6D500180	M18
40	Screw(SP-3×6)	4	6C520306	M3×6, With WF
41	Screw(SF-5×12)	4	6C500512	M5×12
42	Nut(NH-12)	8	6D010120	M12, With WF
43	Spring pin(PR-3×20)	1	6B023020	φ 3×20
44	Screw(SS-6×15)	2	6C540615	M6 With Nut
45	Screw(BC-5×18)	4	6C030518	M5×18
46	Wing bolt(BS-4×10)	5	6C110410	M4×10
47	Wing bolt(BS-4×15)	1	6C110415	M4×15
48	Screw(BC-4×10)	2	6C030410	M4×10, With SW
49	Wing bolt(BS-8×15)	1	6C110815	M8×15
50	Nut(NH-6)	5	6D010060	M6, With WF
51	Screw(SP-6×30)	1	6C520630	M6×30
52	Screw(SP-6×25)	1	6C520625	M6×25
53	Spring pin(PR-2.5×16)	2	6B022516	φ 2.5×16
54	Screw(SP-4×10)	8	6C520410	M4×10
55	Screw(SS-4×12)	1	6C540412	M4×12
56	Screw(SP-4×45)	4	6C520445	M4×45
57	Chain	1	60031101	2.4M
58	Pinion assembly	2	60030908	

## 10.2 Driving unit

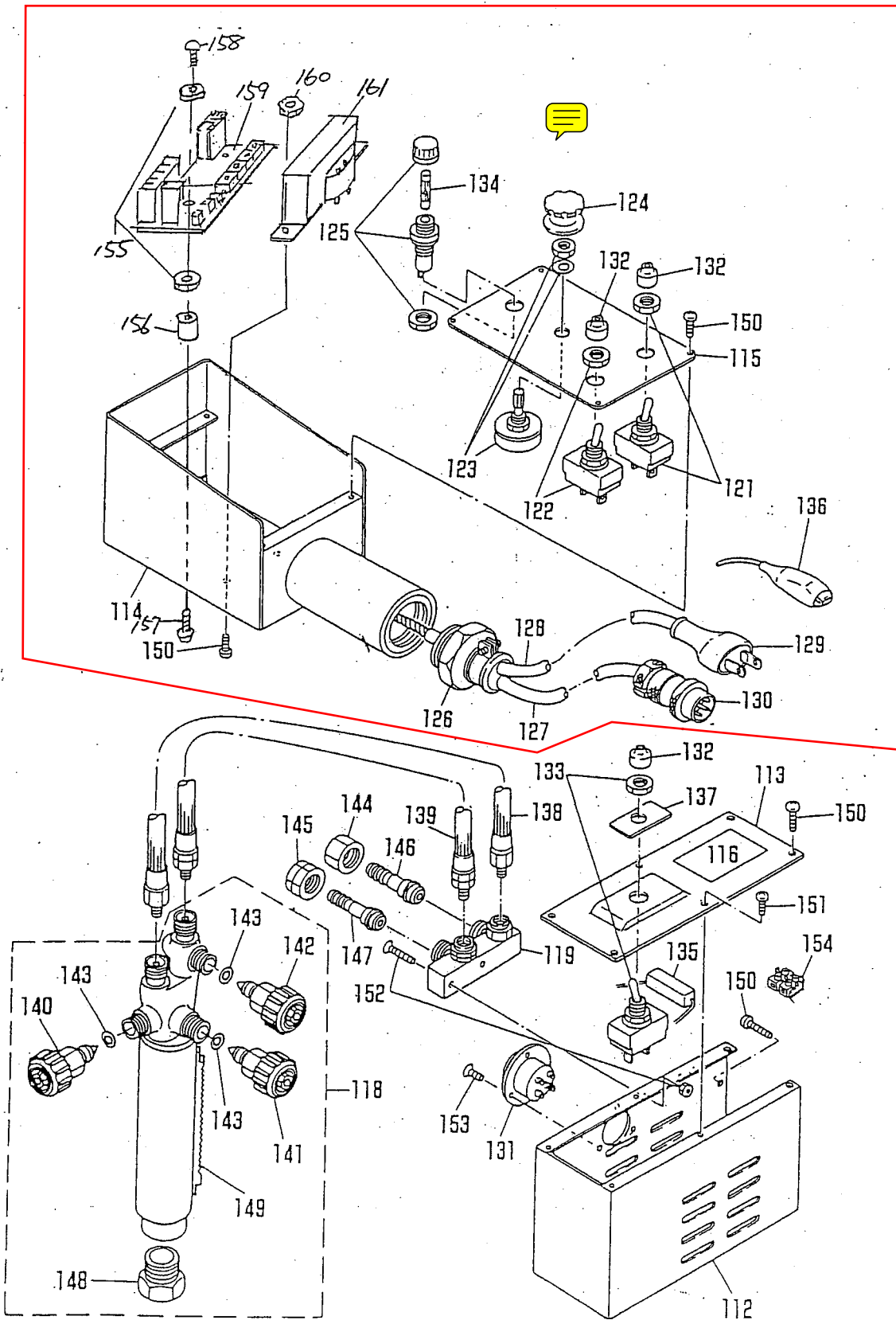


Driving unit

ITEM NO.	PART NAME	QTY	STOCK NO.	REMARKS
59	Reduction gear box	1	60032400	
60	Casing	1	61000887	
61	Gear Ass'y	1	61001127	
62	Screw	3	60520320	
63	Gear (B)	1	60032404	
64	Gear shaft (B)	1	60032405	
65	Collar (B)	1	60032406	
66	Cluth lever	1	60032407	
67	Casing (D)	1	60032408	
68				
69	Pinion	1	60031312	
70	Casing (A)	1	60031310	
71	Collar	1	60031309	
72	Worm wheel assembly	1	60032464	
73	Drive shaft assembly	1	60031318	
74	Bearing retainer	1	60031306	
75	Casing (B)	1	60031305	
76	Clutch lever shaft assembly	1	60031313	
77	Clutch lever metal	1	60031316	
78	No.2 worm	1	60032463	
79	Gear cover	1	60031319	
80	Gear bracket	1	60031320	
81	Bearing retainer	1	60031279	
82	Lever spring	1	60031236	
83	Clutch	1	60031307	
84				
85	Bearing retainer	1	60031014	
86	Motor	1	69000126	DC24V 5000RPM
87				
88	Bearing	2	60030269	608ZZ
89	Bearing	3	60030252	6201ZZ

ITEM NO.	PART NAME	QTY	STOCK NO.	REMARKS
90		1		
91	Screw	6	SP-3×6	M3×6
92	Hex socket head screw	4	BC-6×25	M6×25, with WF,WS
93	Screw	4	SP-6×25	M6×25, with WS
94	Screw	4	SP-6×16	M6×16, with WS
95	Hexagon bolt	1	BH-6×10	M6×10, with WF
96	Spring pin	1	PR-4×20	φ 4×20
97	Screw	11	SP-4×12	M4×12
98	Spring pin	1	PR-2.5×20	φ 2.5×20
99			PR-2.5×14	φ 2.5×14
100				
101	Screw	4	SP-4×16	M4×16, with WS
102				
103	Steel ball	1	TB-1/4	φ 1/4
104				
105				
106				
107				
108				
109	Screw	4	SP-6×15	M6×15, with WS
110	Slider	1	60030265	
111	No.2 worm assembly	1	60032469	Double thred

### 10.3 Electrical and gas unit

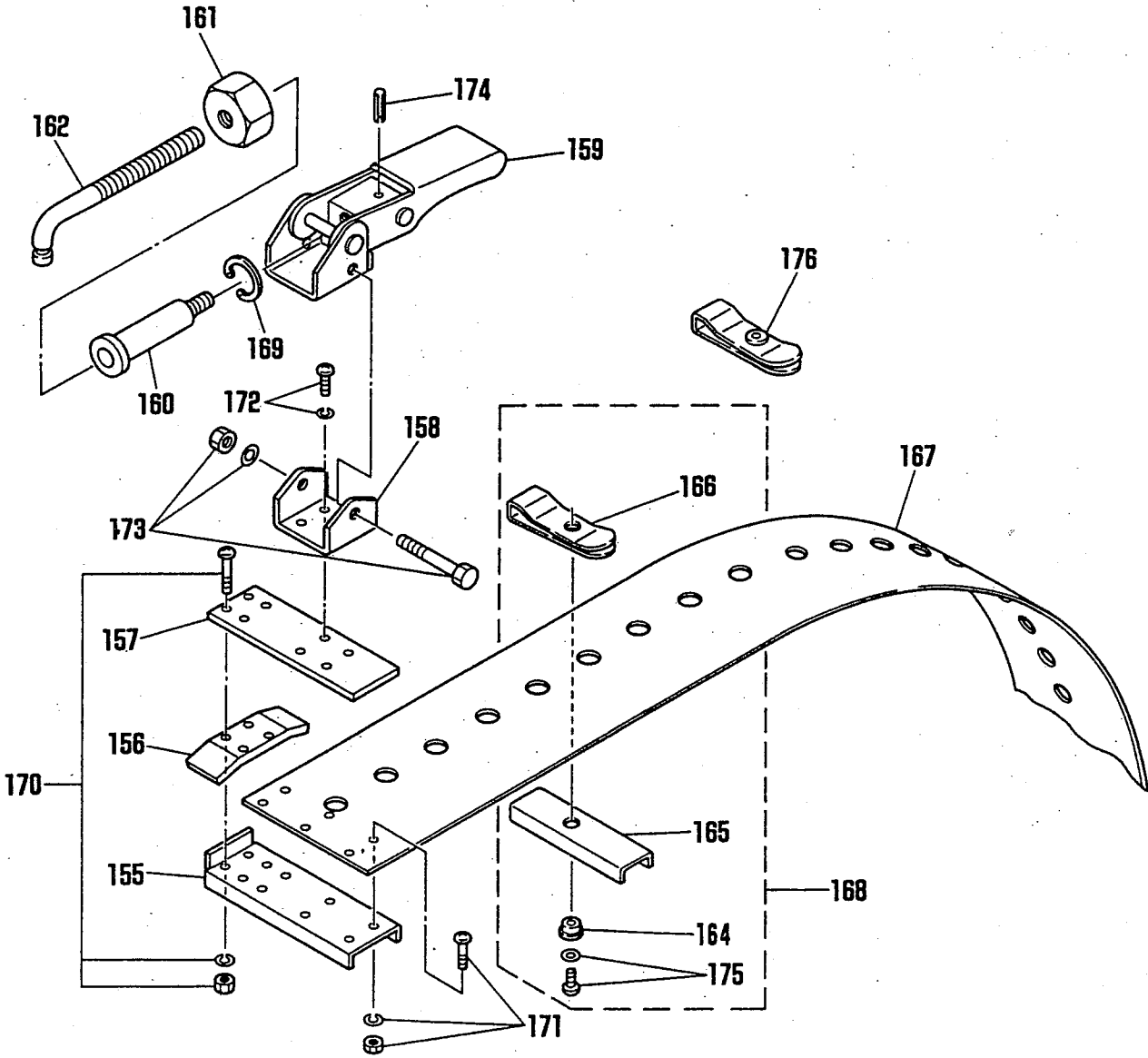


Electrical and gas unit

ITEM NO.	PART NAME	QTY	STOCK NO.	REMARKS
112	Motor cover (A)	1	60032422	
113	Motor cover (B)	1	60032423	
114	Control box	1	61001001	
115	Operation panel	1	60032450	
116	Name plate	1	60032451	
118	Torch	1	60010050	Except USA,KE
	Torch	1	60010051	USA only
	Torch	1	60010055	KE only
119	Distributor	1	60031846	Except USA
	Distributor	1	60031847	USA only
120				
121	Switch	1	60030283	DS-239
122	Switch	1	60032427	S-331
123	Variable resistor	1	60030745	50K Ω
124	Grip	1	60031332	
125	Fuse holder	1	60030749	F-7157
126	Cord rock	1	60032428	NC-2
127	Cable cord	1	60032429	3P×5M
128	Cable cord	1	60030278	3P×5M
129	Rubber plug	1	6N12001	3P
130	Metal concent (plug)	1	61001376	6P×125
131	Metal concent (socket)	1	61001377	6P×125
132	Cap for dust protector	3	60032431	
133	Switch	1	60030822	S-332
134	Fuse	1	6N191010	1A
135	Resistor	1	60031247	RGB-7, 10Ω, 7W
136				
137	Name plate for switch ON-OFF	1	60032433	
138	Hose for oxygen	1	60030322	Except USA,KE
	Hose for oxygen	1	60030323	USA only.
	Hose for oxygen	1	60030324	KE only

ITEM NO.	PART NAME	QTY	STOCK NO.	REMARKS
139	Hose for gas	1	60030326	Except USA
	Hose for gas	1	60030327	USA only
140	Valve for jet oxygen	1	60015354	Except KE
	Valve for jet oxygen	1	60015358	KE only
141	Valve for preheat oxygen	1	60015355	Except KE
	Valve for preheat oxygen	1	60015358	KE only
142	Valve for gas	1	60015356	
143	O-ring	3	60005026	
144	Nut for oxygen	1	60015001	Except USA,KE
	Nut for oxygen	1	60015056	KE only
145	Nut for gas	1	60015002	Except USA,KE
	Nut for gas	1	60015054	KE only
146	Hose connector	1	60015003	Except USA,KE
	Hose connector	1	60015040	KE only
147	Hose connector	1	60015004	Except USA,KE
	Hose connector	1	60015062	KE only
148	Tip fixing nut	1	60005020	
149	Rack for torch	1	60010056	110
150	Screw	10	SP-4×6	M4×6
151	Screw	4	SP-3×10	M3×10
152	Screw	2	SM-5×20	M5×20
153	Screw	3	SM-3×4	M3×4
154	Terminal	1	60031666	2P
155	Isolation washer	4	6003637K	WP-1
156	Spacer	2	60036049	SP-5
157	Screw	2	M3×5	with SW
158	Screw	2	M3×5	
159	Controller	1	69000105	
160	NUT	1		M4
161	Transformer	1	61000472	For 100~220
		1	61000672	For 230~240
		1	61000473	For 42V

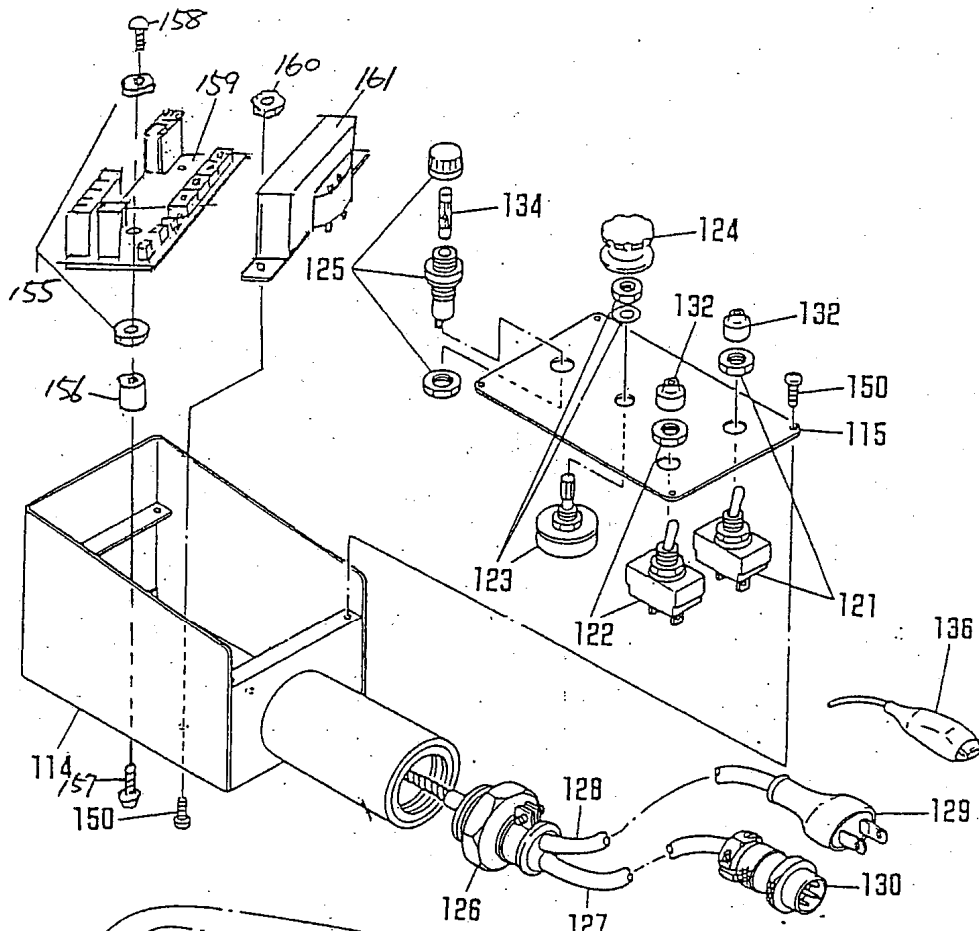
10.4 Guide rail



Guide rail

ITEM NO.	PART NAME	QTY	STOCK NO.	REMARKS
155	Guide rail base	1	60032434	
156	Liner	1	60032435	
157	Hand clamp base plate	1	60032436	
158	Hand clamp bracket	1	60032437	
159	Hand clampper	1	60032438	
160	Adjusting shaft(A)	1	60032439	
161	Adjusting nut	1	60032440	
162	Adjusting shaft(B)	1	60032441	
163	Setting shaft for spring plate(A)	2	60032442	
164	Setting shaft for spring plate(B)	~	60032443	Decide QTY according to the length of rail
165	Sub base	~	60032444	
166	Spring plate for sub base	~	60032445	
167	Guide rail(D-1500)	1	60032446	4974m/m
	Guide rail(D-1200)		60032457	4014m/m
	Guide rail(D-900)		60032458	3094m/m
	Guide rail(D-600)		60032459	2174m/m
168	Sub base assembly	~	60032447	Decide QTY according to the length of rail
169	Stop ring(IRTW-26)	1	6B510260	PR-26
170	Screw(SP-4×18)	6	6C520418	M4×18, with SW,Nut
171	Screw(SP-4×8)	6	6C520408	M4×8, with SW,Nut
172	Screw(SP-4×8)	4	6C520408	M4×8, with SW
173	Hexagon bolt(BH-6×50)	1	6C010650	M6×50, with WF
174	Spring pin(PR-2.5×16)	1	6B022516	φ 2.5×16
175	Screw(SP-4×4)	~	6C520404	M4×4, with WF
176	Band clip	4	60032448	

## Control Box Assembly for Auto Picle S



Parts above included in assembly

**Part# 61001121 Control box assembly 24V motor  
110V input**

**Part# 61001122 Control box assembly 24V motor  
220V input**

**Part# 60032461 Control box assembly 100V  
motor is not available.**

**Customer needs to purchase:**

<b>61001121</b>	<b>Control box assembly</b>
<b>67000036</b>	<b>Gear unit assy with 24V motor</b>
<b>ZS62459</b>	<b>Receptacle Box 6pin NCS-256-R</b>