

CUTTING, POSITIONING & WELDING EQUIPMENT

# PLATE PRO

CNC PLASMA/OXY-FUEL CUTTING MACHINE



# PLATE PRO



Shown: Cutting table optional

## We Make Metal More Profitable

The Koike Aronson, Inc./Ransome's Plate Pro® is the most competitive in its' class. As well as being very affordable, the Plate Pro® is full featured, easy to install, and simple to operate. Plate cutting is now practical for areas with limited space.

The Plate Pro® is a rigid rail, rapid traverse, and multi-tool station cutting system. Available in 5, 6, and 8 foot cutting width and 10, 12, 20, and 24 foot cut lengths. Utilizing a rigid beam and pedestal mounted precision rail system, the Plate Pro® provides movement to maintain critical accuracy at the Plate Pro's high 800IPM rapid traverse speeds.

Offering up to four tool stations, the Plate-Pro® can be outfitted with a minimum of four oxy-fuel cutting stations or a combination of oxy-fuel, a single plasma and/or plate marking system.



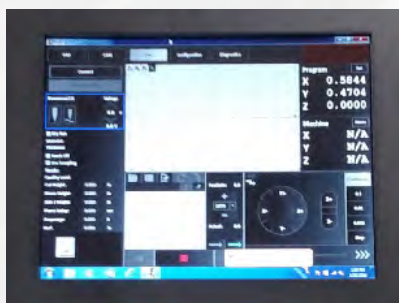
### Operator Console

Hard-wired switches for selecting oxy-fuel station, oxy-fuel processes and gas system control.



### Emergency Stop Button

E-Stop button quickly and safely shuts off machine motion and cutting process, including oxy-fuel gases to the torches.



### Plate Pro Offers FlashCut CAD/CAM/CNC PRO Software

CAD drawing package highlights:

- Simple shape menu
- Manipulate simple shapes into parts you need
- DXF and DWG import
- Fix drawing tool
- CAD layer support
- Centerline image import
- Silhouette image input
- DXF export
- Advanced text true type font support

CAM package highlights:

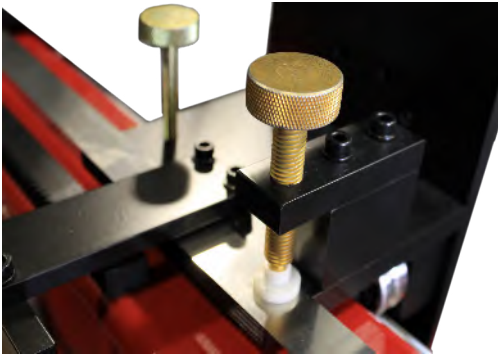
- True shape multipart nesting
- Plasma/Oxy/Marking process support
- Material database (cut chart support)

- Lead-in/Lead-out auto assignment for material thickness
- Customizable lead-in and lead-out
- Advanced small hole processing
- Over burn
- Tabbng
- Graphical editing of lead-in/lead-out
- Curved text around any shape

CNC package highlights:

- Jump to line
- Allows for easy torch placement on large nests or parts
- Dynamic torch height control
- Process parameter manipulation
- Full view of nests or part with real time tracking

# STANDARD EQUIPMENT



**Slave Carriage Band Clamp**  
Allows easy and accurate placement and spacing of tools such as oxy-fuel and plasma torches.



**Rail Axis Cable Carrier**  
Is mounted to the rail pedestal weldment. The cable carrier keeps all of the hoses & cables organized during machine movement.



**Linear Way and Heat Shields**  
Replaceable linear roundway provides for a smooth and accurate cutting motion. Heavy duty heat shields protect machine from heat and sparks.



**Maintenance Free Guide Rollers**  
Sealed bearings for linear roundway

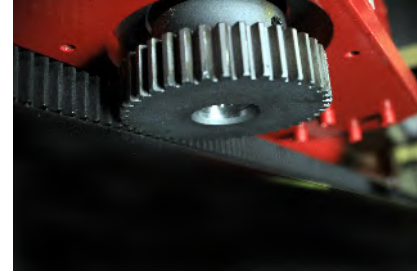
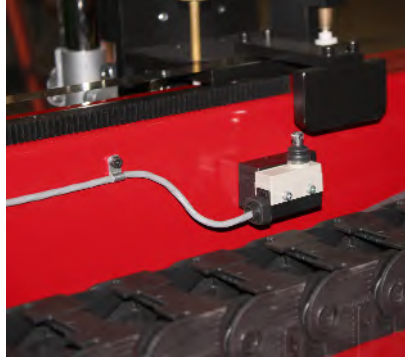


**Rail Axis Drive Rail**  
Precision ground rail and rigid pedestal weldment provides the stability for smooth and accurate machine motion.

# STANDARD EQUIPMENT



**Rail Axis & Cross Axis Limit Switches**  
Used for over-travel as well as homing of the machine.



**Large Diameter Drive Pinions**  
Large diameter pinions offer accurate and smooth machine motion.

# PLASMA SYSTEMS

## **powermax<sup>®</sup> series**



- powermax65- Production Pierce 1/2" Mild Steel
- powermax85- Production Pierce 5/8" Mild Steel
- powermax105- Production Pierce 3/4" Mild Steel
- powermax125- Production Pierce 1" Mild Steel



MAXPRO 200  
Production Pierce 1" Mild  
Steel Liquid Cooled Torch

**Hypertherm<sup>®</sup>**

# OPTIONAL EQUIPMENT



**Manual Plasma Bevel Station**  
Bevel in the rail axis only.  
Non-contour mechanical adjustment  
from +/- 0 - 45°.



**Laser Pointer**  
Allows operator a visual  
indicator for plate alignment  
and torch positioning.



**Pneumatic Dot-Peen Pin Stamp Marker Station**  
Carbide tipped variable speed punch for  
marking bend lines, layout lines, drill  
locations and alphanumeric text as small  
as 1/4" high.

# OXY-FUEL SYSTEMS & OPTIONS



## Oxy-Fuel Torch Stations

(Up to three stations available)

Model "G" motorized lifter, 6-inch (150 mm) stroke at 40 IPM.

All stations are controlled from Operator console. Standard 500L Koike torch with three cutting tips.

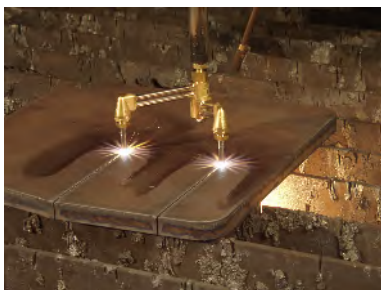


## HI-LO Oxy-Fuel Gas System with Auto Ease-On

Allows HI-LO preheat for fast preheating of plate and superior cutting quality. Features auto ease-on pierce control for cut oxygen. Allows for precise piercing on thicker plate. Maximum 4" (100 mm) thick material with 3 torches.

## Oxy-fuel Manual Bevel Attachment

The bevel attachment is used in place of a Koike cutting tip. It is used for bevel cutting operations, including top and bottom bevel cuts.



## Koike Twin Tip Holder

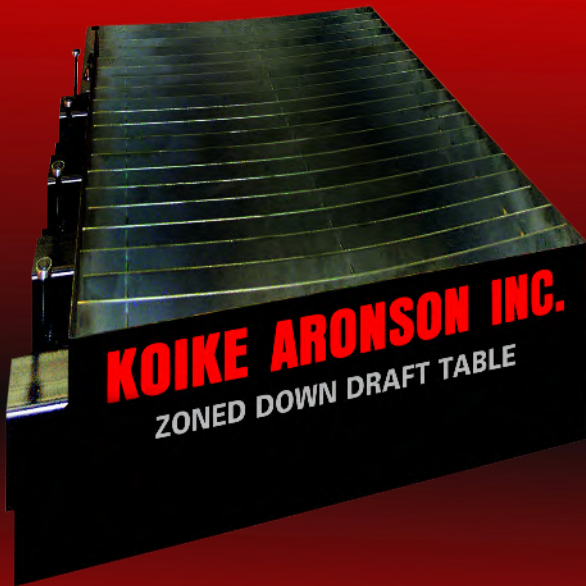
Covers a single oxy-fuel cutting torch into dual cutting torches. Allows strip cutting and a closer distance between small parts.

## Koike D7 Cutting Tips



- Safer Option  
Koike's 100 Series tips are designed to reduce backfires to keep the operator and torch safe
- High Quality  
Each tip is thoroughly tested to ensure consistent high-quality cutting in every tip
- Faster Cutting  
Our high-speed divergent tip increases cutting speed by 20-28% over standard tips
- Gas Savings  
Gas consumption is reduced up to 26%
- Durable  
A stainless steel cutting oxygen liner results in the tip lasting up to five times longer over standard tips

# TABLE OPTIONS



## Koike Zoned Downdraft Cutting Table

The Koike Downdraft table is as big, or as small, as most workpieces you've got. Its modular design lets you add space as you need it, with a maximum material thickness of 6 in.

Operation is simple: there are no electronic components, and slat frames and slag pans remove easily for cleaning. Fume extraction is everything you need, thanks to multiple zones for optimal fume extraction. Downdraft tables are used primarily for plasma cutting and combined with fume extraction units that filter the air back to the factory. Downdraft tables provide the best option for high-quality cutting with high-density plasma systems.



## Koike Water Cutting Table

The Koike water cutting table is an economic solution to reducing smoke, sparks and dust into the environment. It can be used for both oxy-fuel and plasma cutting. While not the most optimized solution for high density plasma systems, it still provides good results in cut quality. Constructed out of 1/4" thick steel the table offers a heavy duty design with re-enforced side walls for extra durability.

The steel tank air bladder allows raising and lowering the water level with air.

The design of the table allows 6" thick plate and under to be leveled to the table for more accurate cutting.

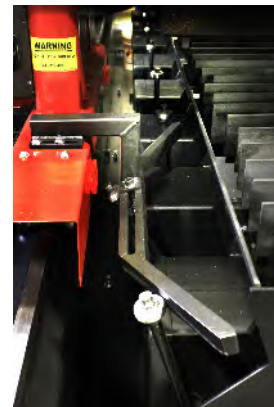
1/8" thick slats are spaced 3" apart and curved to help stop small parts from falling into table and prevent straight line cutting along a slat. This feature reduces slag along the bottom of parts and prolongs the life of the slats.

Easy lift lugs allows you to lift the whole slat and pan assembly or each individual component of this assembly. As an example: it allows for the lifting of slats and the holder for easy access to collector pans.



## Fume Extraction Unit

For downdraft table.



## Downdraft Table Trip Arm

Mechanical trip arm that opens and closes zones in the Koike Downdraft table. No pneumatic or electrical components are required.

# PLATE PRO WORKSHEET

Effective Cutting Width  Effective Cutting Length

Material Types:

## Material Thickness Range

Plasma Thickness

Oxy-Fuel Thickness

## Plasma System

Hypertherm®

## Plasma Bevel

Manual Type

## Plate Marking

Pneumatic Dot Peen

## Offline Software

FlashCut PRO

## CNC Controller/Height Control Package

FlashCut CNC Control with 21" Panel PC and KOIKE Torch Height Control

## Plasma Type

Quantity:   Conventional

Voltage:

## Oxy-Fuel

Quantity  Fuel-Gas Type

Manual Bevel Attachment

## Cutting Tables

Pneumatic Water

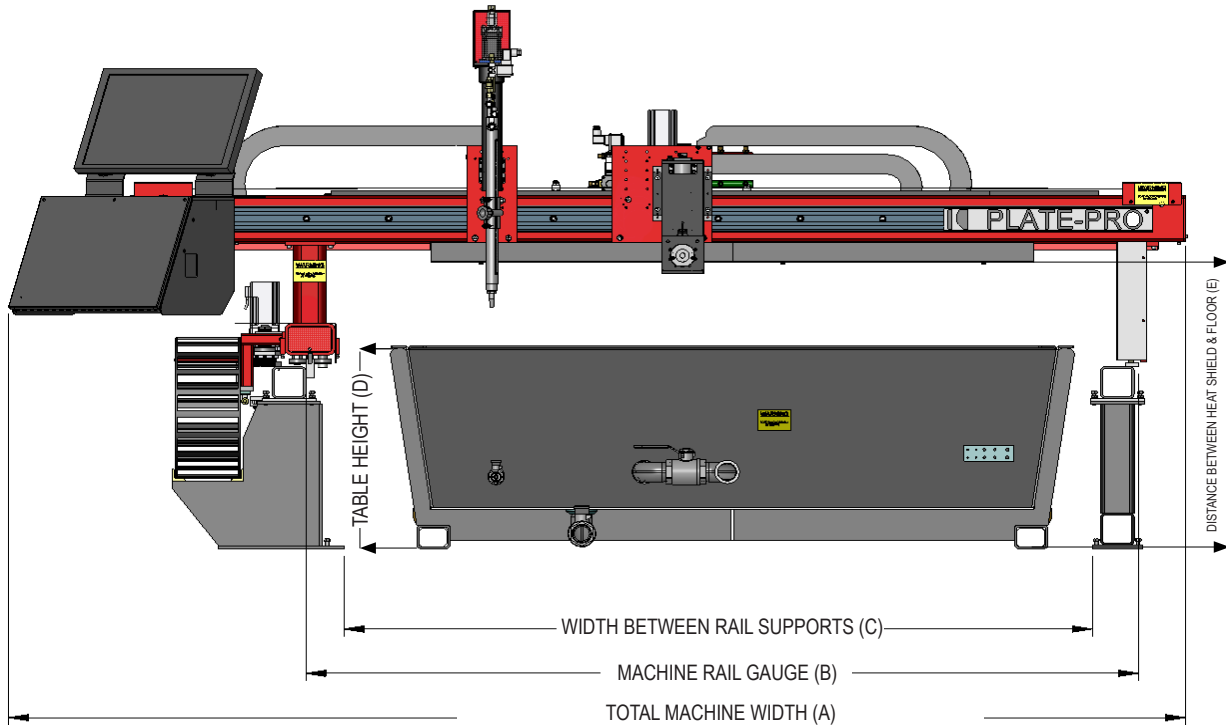
Dry

Downdraft

Fume Collector



# SPECIFICATIONS



MODELS	PLP1500	PLP2000	PLP2500
Effective Cutting Width	60 in	72 in	96 in
Total Machine Width [A]	133 in	145 in	169 in
Machine Rail Gauge [B]	87 ½ in	99 ½ in	123 ½ in
Width Between Rail Support [C]	77 ½ in	89 ½ in	113 ½ in
Table Height [D]	30 in	30 in	30 in
Table Width	64 in	76 in	100 in
Effective Cutting Length	120/144/240/288	120/144/240/288	120/144/240/288
Rail Length	168/192/288/336	168/192/288/336	168/192/288/336
Distance Between Heat Shield & Floor	36 ¾ in	36 ¾ in	36 ¾ in
Rapid Traverse Speed	800 IPM	800 IPM	800 IPM
Contour Speed (Maximum)	400 IPM	400 IPM	400 IPM
Machine CNC (Standard)	FlashCut CNC 21" Panel PC		
Machine Drive System	Stepper	Stepper	Stepper
Maximum Number of Slave Stations	2	2	2
Maximum Plasma or Marker Stations	2	2	2
Number of Tools	Up to 4	Up to 4	Up to 4
Oxy-Fuel Gas System	Hi-Lo/Basic	Hi-Lo/Basic	Hi-Lo/Basic
Machine Voltage	115/1/60		

Specifications are subject to change without notice



Headquarters- Arcade, NY

# COMPANY

Koike Aronson, Inc./ Ransome is headquartered in Arcade, NY. We are a proud supplier of advanced cutting machines, welding positioning

equipment, portable cutting/welding machines, and gas apparatus. Our knowledgeable staff can assist you with virtually all your needs in metal fabrication. Koike Aronson/Ransome cutting machines can be customized to fit most requirements, and our welding and positioning equipment can be made to accept work pieces of nearly any size.



Cutting Machine Assembly

Our manufacturing area consists of a machine shop, saw shop, two assembly shops, a burn shop, and a weld shop. Handling nearly all manufacturing in-house helps us maintain our extremely high quality. Our factory uses 5S, a lean tool directive, that increases productivity through tidiness and improved organizational practices. We have the capacity to run three shifts with approximately 100 employees per shift. Machining capabilities range anywhere from a small nut to a large weldment. Most importantly, we use our own products to build our customers' machines.

The Engineering Department is comprised of mechanical, electrical, and software engineers with over 250 combined years of design, process, and technical experience. Their knowledge allows us to apply proven designs to customer needs and to develop new technology for custom applications. AutoCAD, SolidWorks, and Cosmos software are used to optimize designs for standard products and to create custom solutions for specialized equipment. Our electrical and mechanical systems are designed to industrial standards for strength, reliability, and safety.



World Class Service Support

We have the technicians, training, and engineering support to keep your machine running like new for years to come.

The Business Unit and Customer Service Representatives of Koike Aronson/Ransome offer our customers well over 170 years of combined experience. They work with our many distributors and manufacturer sales representatives to make sure you get quality products and the right equipment for your application. We encourage feedback, and are ready to work with you to keep your machine productive for many years.

The dedicated service technicians of our Field Service Department work as a team to keep machines running at top performance. This starts with sending pre-installation documentation to prepare our customers for machine delivery, installation, and training. Our website is filled with helpful information including the KAR Club, which offers numerous tips on troubleshooting, tuning your machine, and machine maintenance.



For Other Downloads, please scan here with your smartphone

# Made in USA. At Work Worldwide

## Koike Customer Visit Program See How Koike Can Make Metal More Profitable For You

Koike Aronson's Customer Visit Program was introduced to provide those looking to purchase equipment the opportunity to come visit us, meet our people, and tour our complete manufacturing facility. Your visit to our facility is on us. All expenses paid for including: airfare, transportation, room and meals.

**Call a Koike Representative for details  
and schedule your appointment today!**

**Phone: (585) 492-2400**

**Toll Free: (800) 252-5232**

**Fax: (585) 457-3517**

**[www.koike.com](http://www.koike.com)**



### MANUFACTURING PROCESSES



**LOGISTICS**



**SAWING / MACHINING**



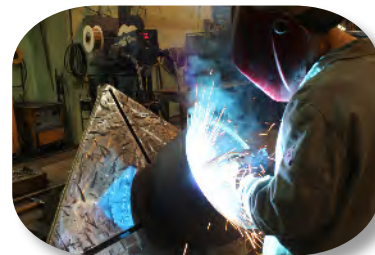
**BURNING**



**ASSEMBLING**



**PAINTING**



**WELDING/FABRICATING**

# CUTTING, POSITIONING & WELDING EQUIPMENT



## Koike Aronson, Inc./Ransome



635 W. Main Street  
P.O. Box 307  
Arcade, NY 14009

Phone: (585) 492-2400  
Toll-free: (800) 252-5232  
Fax: (585) 457-3517

[www.koike.com](http://www.koike.com)



## Koike Aronson Brasil

Estrada dos Romeiros  
6116 - Galpão 97  
Santana de Parnaíba  
CEP 06513-001



Tel/Fax: +55 [11] 4780-7341

[www.koike.com/br](http://www.koike.com/br)

