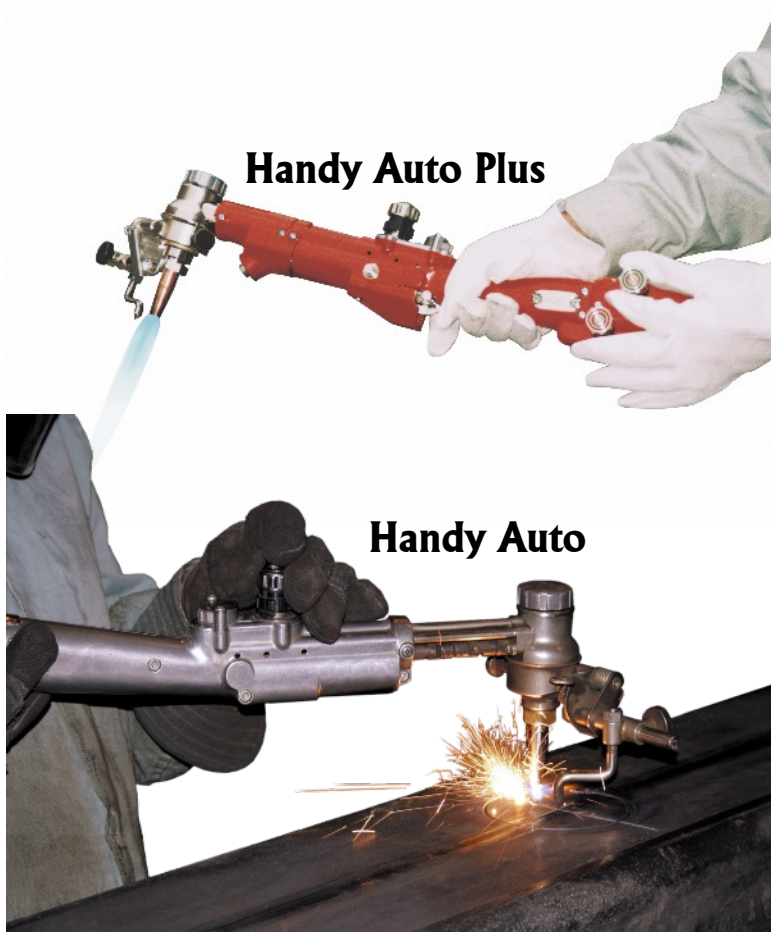


HANDY AUTO Series

Portable Gas Cutting Torch



All Types of Shapes Possible with Handy Cutting Torch

The Handy Auto automatic gas cutting torch can handle straight line, bevel, circle and shape cutting by simply rotating the wheel provided on the side of the torch. This convenient torch with its light weight body is so easy to use that you will want one in every work station!

The latest model in the Handy Auto series is the Handy Auto Plus, which features the added convenience of auto ignition. Valves control pilot gas, cutting gas, preheat oxygen and cutting oxygen. The system utilizes a high-frequency current generator activated by squeezing the ignition lever.

Features & Benefits

- **Two Models Available**
Handy Auto (without auto-ignition) & Handy Auto Plus (with auto-ignition and flame preset valves)
- **Motorized Oxy Fuel Hand Torch**
Performs clean machine quality oxy fuel cuts or multiple applications; drive switch is linked to cutting oxygen valve for simultaneous operation of cutting oxygen and drive power.
- **All Position Drives**
Allows cutting in any position from any direction; positive drive includes universal joints for smooth power transmission and added protection.
- **Quick Change Attachments**
Perform plate beveling, circle cutting and straight line cutting with single hand changeover.
- **Light Weight**
Only 5.9 lb/2.7 kgs (Handy Auto)
7.7 lb/3.5 kgs (Handy Auto Plus) and easy to carry and use.
- **High Quality Tips**
Koike's superior design Series 100 torch tips are included to ensure fast, smooth cuts.



KOIKE ARONSON, INC. / RANSOME



Small circle cutting attachment
 1¼ to 4½ in (30-120mm)
 (Included in all kits)



Straight Cutting
 (Included in all kits)



Beveling Wheel
 (Included in Handy Auto Professional kit)



Handy Auto Professional Kit
 (includes accessories and steel carrying case/box)



Guide Rail
 Part#ZS30104

Enhance Versatility and Efficiency with Various Standard and Optional Attachments

The Handy Auto automatic gas cutting torch is a staple in your shop. With many standard and optional attachments to choose from, hand held torch cutting has never been easier. Let Koike Aronson be your choice for ease and accuracy!

Handy Auto Plus



Flame Adjusting Apparatus

Preheat gas and oxygen valves are equipped with safety apparatus. Valve control knobs are equipped with a pull to set feature. Once preheat flame is set, knobs can be positioned to avoid accidental change in settings.



Attachments are easy to interchange

Varied cutting is possible by simply changing attachments. All attachments including wheels can be removed and replaced with easy one-hand motion. Drive wheels can be turned 360 degrees around the cutting tip to allow cutting in any direction.



Preset Flame Adjusting and Auto Ignition Function

To Ignite:

- Connect all gas hoses and regulators checking for leaks, then open tank valves and set regulator output.
- Open oxygen and fuel gas valves and pull ignition trigger.
- Holding trigger against unit, adjust the flame with the oxygen and fuel gas valves then release lever.
- The lever will return to the midpoint and lock.
- When the trigger is released, the pilot flame will extinguish as the preheat flame continues to burn.

To extinguish:

- After cutting is completed simply press the ignition lever release button and the flame goes out.
- To re-ignite, simply pull the ignition lever.

Portable Automatic Hand Cutting Torch with Multiple Uses

Koike's Handy Auto Plus has been developed for automation of hand-held cutting used in various field operations. The Handy Auto Plus is equipped with an auto ignition system that ensures convenience and flexibility. Additional features include automatic wheel drive running along side cutting tip for wheel rotation to direct the desired cut.

Multiple surface cutting can be achieved including vertical, angled, H-shaped steel bar and pipes. In addition to straight lines, curved lines and surfaces such as, columns are easily done.



Straight lines



Vertical surfaces



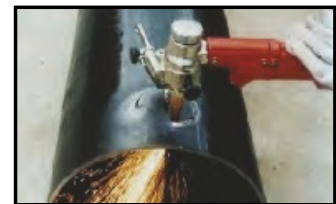
Round surfaces



Arcs, curved lines



Angles



Pipes

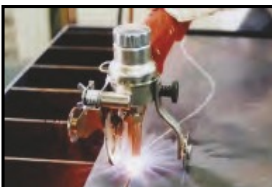
Options to Increase Accuracy and Efficiency



Attachment for small circle cutting
 \varnothing 1¼-8 in (ø30- 200mm)
 Part#61001597



Large circle compass \varnothing 5-19 ¾ in
 (ø125- 500mm)
 Part#ZS30106



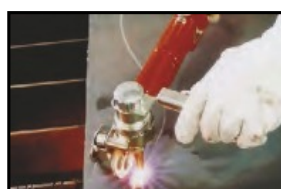
Guide handle (included in
 Professional & Plus Professional)
 Part#ZS30105



Guide rail for straight line cutting
 Part#ZS30104



Wheel set for bevel cutting 22° - 45°
 (included with Handy Auto Plus)
 Part#ZS30102



Auxiliary wheel for perpendicular
 cutting
 Part#ZS30101

**Optimum Performance with a wide
 Range of Options and Accessories**



HANDY AUTO PROFESSIONAL MODEL DESCRIPTIONS	Part#
Handy Auto Professional Kit for Acetylene	ZA4011103
Handy Auto Professional Kit for LPG/NG	ZA4011102
Handy Auto Professional units include: (1) Handy Auto Torch body (1) Standard Drive Wheel (1) Wrench (2) Fuse (1) Support Wheel (1) Bevel Wheel (1) Guide Handle (1) Small Circle Cutting Attachment - 1 1/4 in to 4 1/2 in diameter (1) Steel Carrying Case (1) Safety-Z Coupling Set ZA3232260 (3) Cutting Tips Model 102 or 106 - Size 0, 1, 2	

HANDY AUTO & HANDY AUTO PROFESSIONAL SPECIFICATIONS	
Cutting Thickness	1/8 - 2in (5-30mm)
Cutting Speed	8-28 in/min (200-700mm/min)
Speed Control	Transistor control
Wheel Drive	Friction drive
Motor	DC 12V, 7200 RPM
Power Source	AC 120V; AC 220V, DC 12V
Machine Length	16 5/16 in (430mm)
Weight	5.9 lb (2.7kg)
Cutting Tip - 102 for Acetylene, 106 for LPG	Koike 100 series

Koike 100 series cutting tips are recommended for best performance. Lifetime warranty on torch against a sustained flashback when using genuine Koike cutting tip (damaged tip and torch must be returned).

OPTIONAL EQUIPMENT	
Guide rail	ZS30104 with two magnetic blocks 20 in (500mm)
Large circle cutting attachment	ZS30106 1 set with magnetic block 4 1/2 to 19 1/2 in (120-500mm) diameter
45° Bevel Wheel Fixed Angle	ZS30102 (lowers cutting tip to surface)



HANDY AUTO PLUS PROFESSIONAL DESCRIPTIONS	Part#
Handy Auto Plus Professional Kit for Acetylene	ZA61001963
Handy Auto Plus Professional Kit for LPG/NG	ZA61001951
Handy Auto Plus Professional units include: (1) Handy Auto Torch body with Auto Ignition (1) Standard Drive Wheel (1) Wrench (2) Fuse (1) Support Wheel (1) Bevel Wheel (1) Guide Handle (1) Small Circle Cutting Attachment 1-1/4 in to 4-1/2 in diameter (1) Steel Carrying Case (1) Safety-Z Coupling Set ZA3232260 (3) Cutting Tips Model 102 or 106 - Size 0, 1, 2	

HANDY AUTO PLUS PROFESSIONAL SPECIFICATIONS	
Cutting Thickness	1/4 - 1 1/4 in (5-30mm)
Cutting Speed	6-20 3/4 in/min (150-530mm/min)
Speed Control	Transistor control
Wheel Drive	Friction drive
Motor	DC 12V, 7200 RPM
Power Source	AC 120V- AC 240V
Machine Length	19 3/4 in (500mm)
Weight	7.7 lb (3.5kg)
Standard Wheel	Attaches to machine body
Cutting Tip - 102 for Acetylene, 106 for LPG	Koike 100 series



Koike Techno Center Products

Koike Aronson Inc.
 P.O. Box 307, Arcade, New York 14009
 Phone (585) 492-2400 Fax (585) 457-3517
www.koike.com



HANDY AUTO SERIES 02/17 KENG