


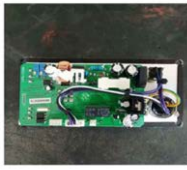
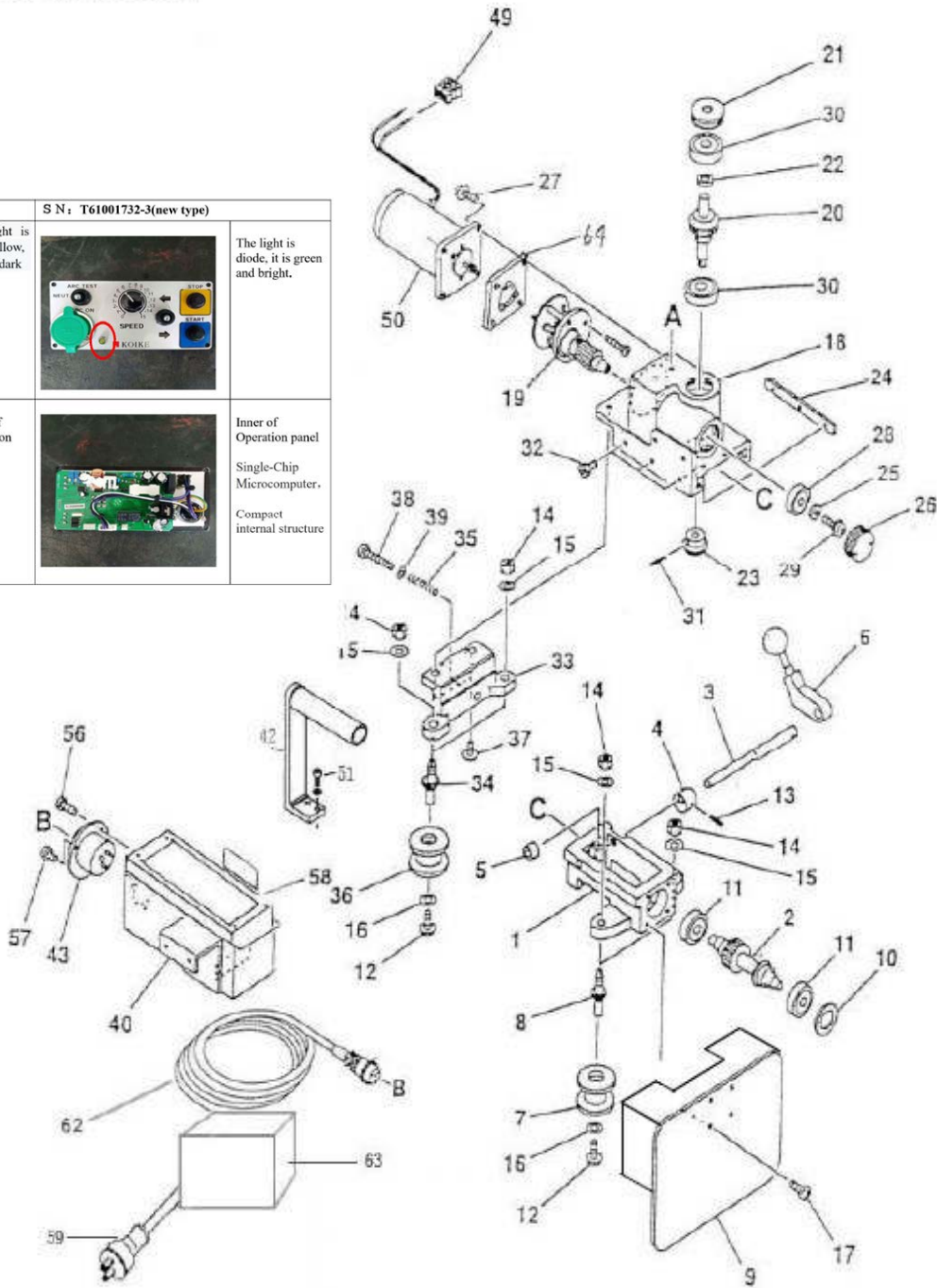


8. Part List

8.1 Main Body and Driving Parts

S N: 61004197 (old type)		S N: T61001732-3(new type)	
	The light is light yellow, A little dark.		The light is diode, it is green and bright.
	Inner of Operation panel		Inner of Operation panel Single-Chip Microcomputer. Compact internal structure



Main Body and Driving Parts

No	Designation	Quantity	Stock No.	Remark
1.	Machine base	1	T60031674	
2.	Driveshaft group	1	T60031606	
3.	Clutch shaft	1	T60031607	
4.	Eccentric collar	1	T60031608	
5.	Stopper	1	T60031609	
6.	Clutch handle (group)	1	T60031610	
7.	Side wheel (Group)	2	T60031611	
8.	Side shaft (A)	2	T60031612	
9.	Heat-resistant plate	1	T89000497	
10.	Linkage	1	T60031684	
11.	Bearings	2	T60031033	
12.	Screws	4	SP-3*6	
13.	Spring pin	1	PR-2*12	
14.	Inner hex nut	4	NH-6	M6
15.	Washer	4	WF-6	M6
16.	Washer	4	WF-3	M3
17.	Screws	8	SP-4*8	M4*8
18.	Gearbox	1	T60031615	
19.	Reducer (group)	1	T61000715	
20.	Turbo (group)	1	T60031617	
21.	Bearing gland	1	T60031618	
22.	Collar (A)	1	T60031619	
23.	Helical gear (B)	1	T60031620	
24.	Side buttons	1	T60031621	
25.	Washer	1	T60031015	
26.	Bearing gland	1	T60031014	
27.	Screws	4	SP-4*16	M4*16
28.	Bearings	1	T60031033	627ZZ
29.	Screws	1	T60031674	M4*4
30.	Bearings	2	T60031034	628ZZ
31.	Spring pin	1	PR-2.5*16	
32.	Butterfly bolt	3	SS-5*5	
33.	Side wheel bracket	1	T60031675	
34.	Side wheel axle (B)	2	T60031613	
35.	Spring	1	T60031676	

No	Designation	Quantity	Stock No.	Remark
36.	Side wheel (group)	2	T60031611	
37.	Screws	2	SP-5*14	
38.	Inner hex bolts	1	BC-5*30	
39.	Washer	1	WF-5	
40.	Control box	1	T89000145	Large New Style
41.	Operation panel	1	T98000068	New Style Requires 41 and item 62 DC power cord. Includes 40
42.	Handle	1	T61000601	
43.	Metal socket	1	6N100062	220V,4P



50.	Motor	1	T89002359	
51.				
52.				
53.				
54.				
55.				
56.				
57.				
58.				
59.	Rubber plug	1	T30002899	STD
	Rubber plug	1	T60030280	KAR
60.				
61.				
62.		1		
	Power cord (group)	1	T98000314	KAR NEW Style 24 V AC. Requires new control panel 41
64.	Motor flange	1	T89002359	
	Heat-proof plate pad	1	T89000612	

Old Style 24V AC power cord
No longer Available

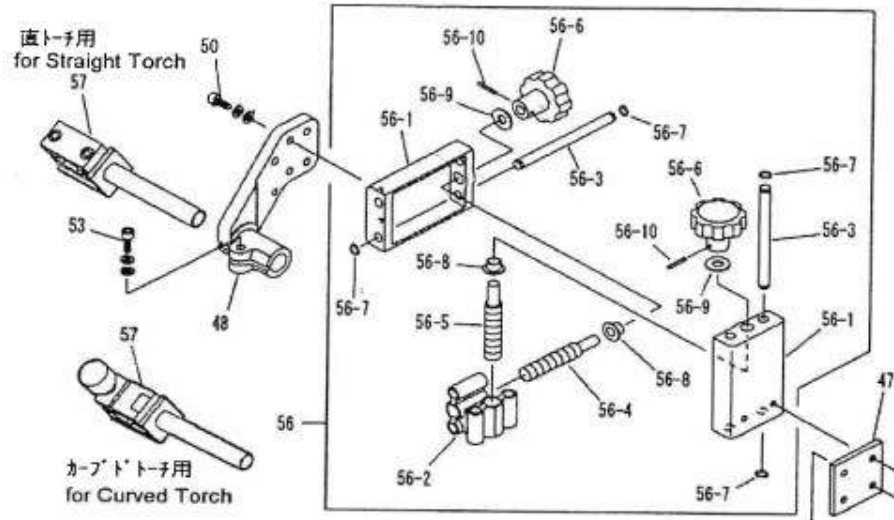


New Style 24V DC power cord

When replacing old style power cord with new DC Style you must change item 41 (control panel) at the same time



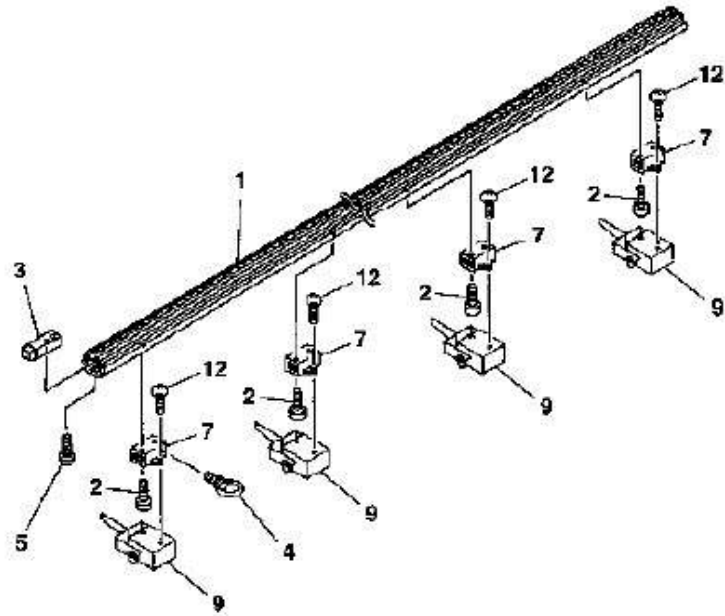
8.2 Torch Holder



56	Slide unit assembly	1	T61000645	
56-1	Slide base	2	T61000595	
56-2	Nut	1	T61000596	
56-3	Shaft	4	T61000598	
56-4	Screw shaft	1	T61000600	
56-5	Screw shaft(left)	1	T61000659	
56-6	Handle	2	T61000061	
56-7	Stop ring	4	T6B520080	STW-8
56-8	DU bush with brim	2	T64000016	MB0808-15FDU
56-9	DU washer	2	T6D520006	WC06DUN
56-10	Spring pin	2	T6B022518	PR-2.5 × 18
57	Torch holder ass'y(for straight torch)	1	T61001643	
57	Torch holder ass'y(for curved torch)		T61000676	

8.3 Track

8.3.1 Linear Guide Track



8.4. Parts of the Track

No.	Designation	Quantity	Stock No.	Remarks
1	Linear Track	1	T60031648	Only applied to guide tracks.
2	Screws	8	SP-5×14	M5×4 with SW
3	Linkage Block	1	T60031694	
4	Ring Bolts	2	60031654	
5	Screws	2	SP-6×20	M6×20
7	Magnet Bracket(A)	4	60031657	
8	Magnet Bracket(B)	1	60031658	Only applied to 2D,3D
9	Magnet	4	60031682	120kg, only applied to 1D
	Magnet	5	60031682	120kg 2D,3D
10	Linkage Pin	1	60031695	only applied to 2D,3D
11	Hex Nuts	10	NH-5	only applied to 2D,3D
12	Screw	10	SP-5×14	M5×14
13	Linkage Plates	1	60031659	only applied to 2D,3D
14	Screw Nut	1	NB-6	M6