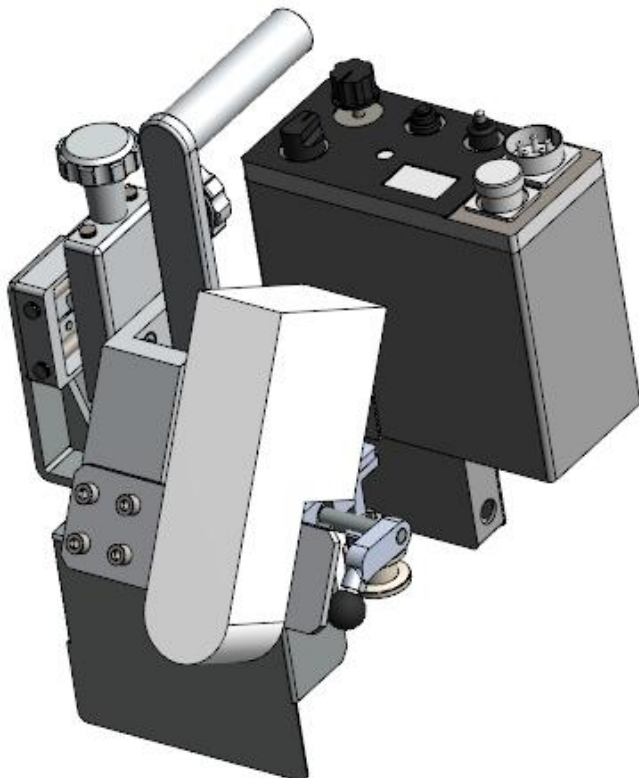
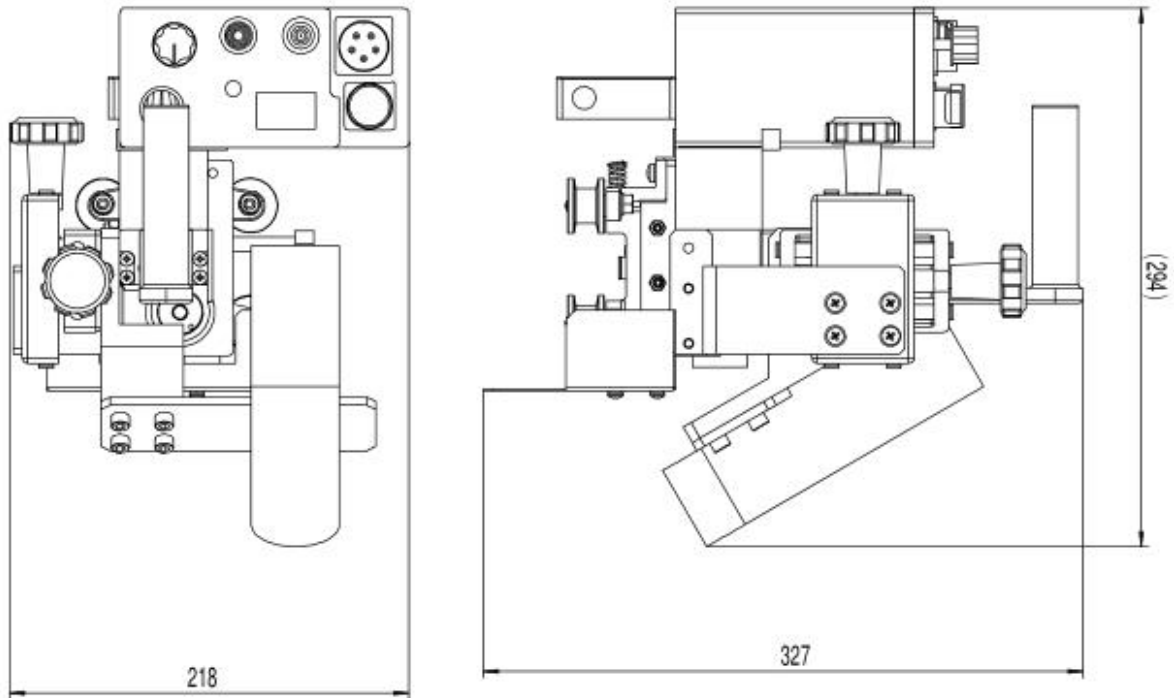
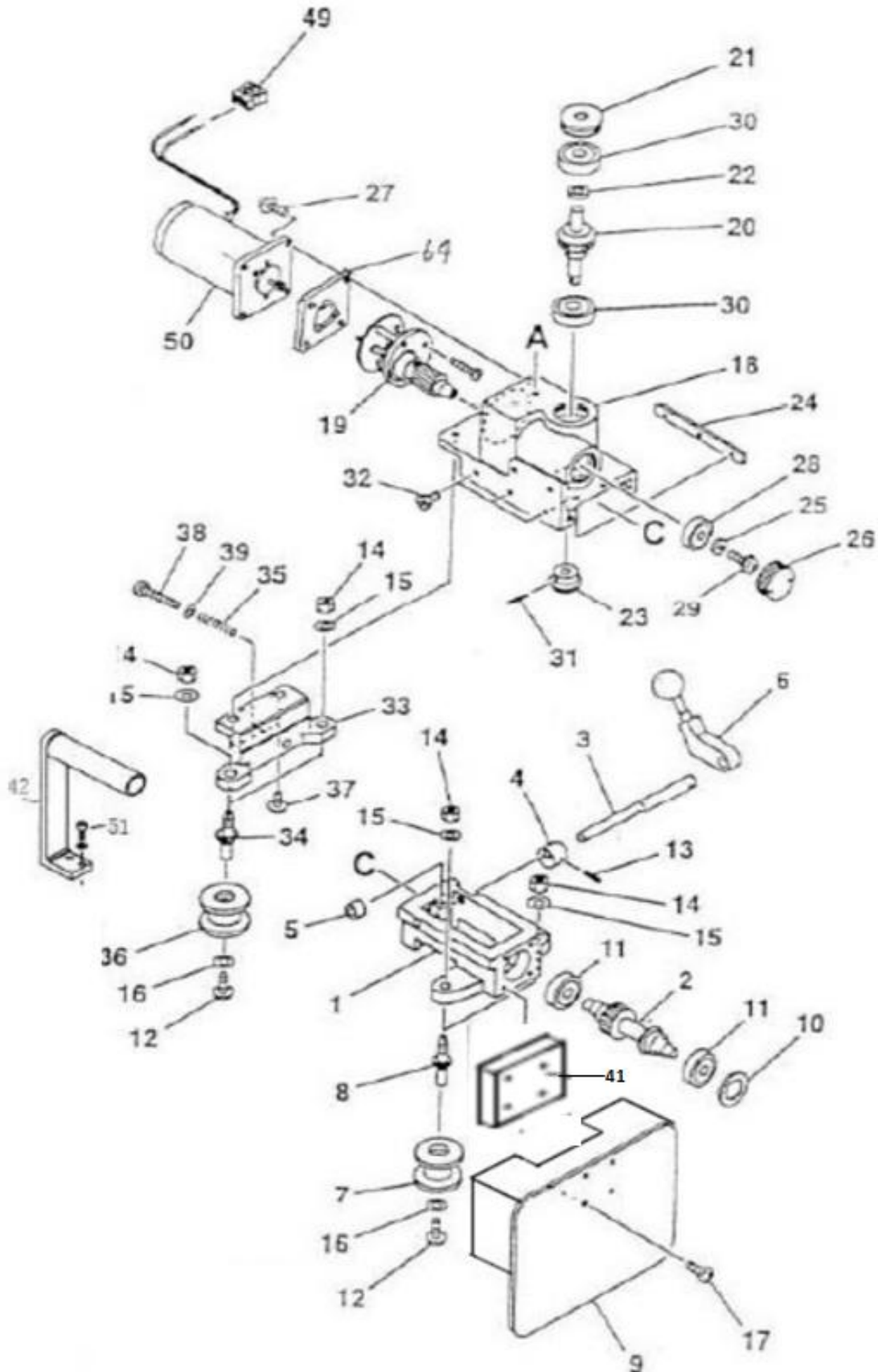


10 Assembly drawing of IK-72T W2



11、 Part List

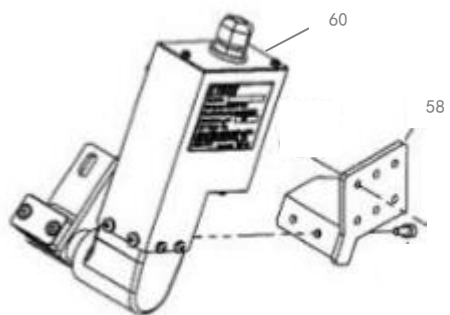
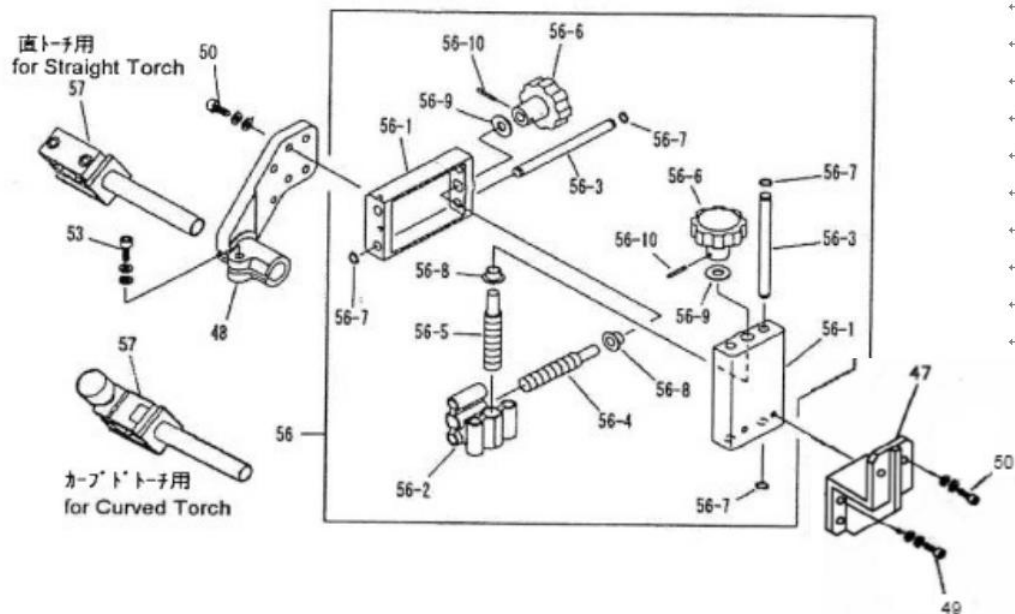
11.1 Main and Driving units



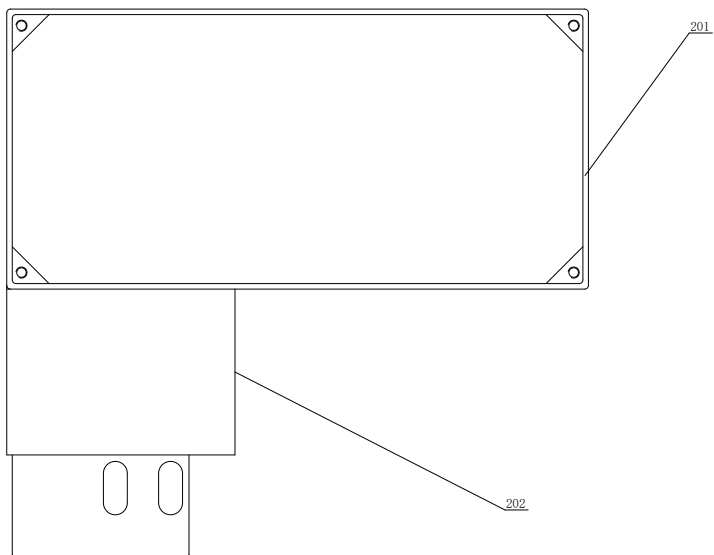
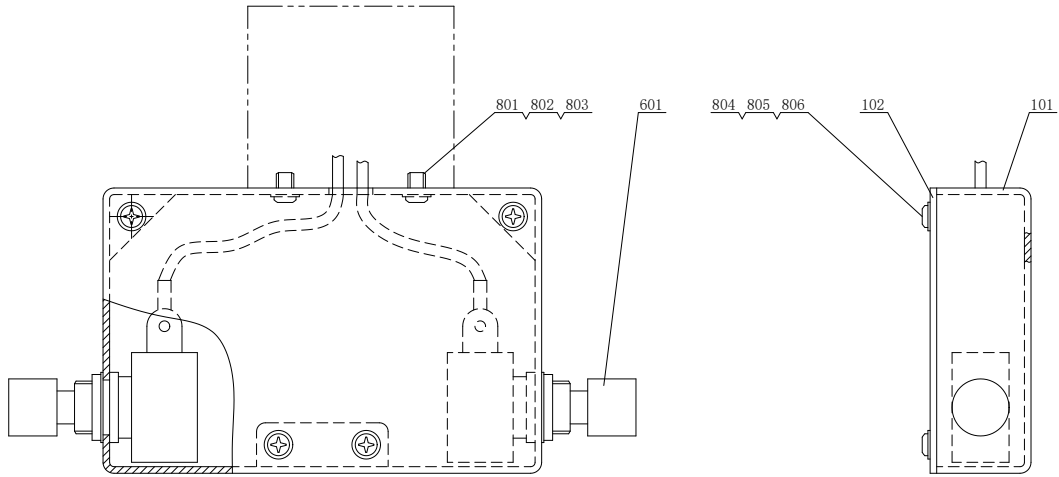
Main and driving units

ITEM NO.	PART NAME	Q'TY	STOCK NO.	REMARKS	ITEM NO.	PART NAME	Q'TY	STOCK NO.	REMARKS
1	Machine base	1	T60031674		36	Side gear assembly	2	T60031611	
2	Drive shaft assembly	1	T60031606		37	Screw	2	T6C530514	SP-5×14
3	Clutch shaft	1	T60038839	102L.	38	Hexagon bolt	1	T6C030530	BC-5×30
4	Eccentric collar	1	T60031608		41	Insulating board just	1	T89000612	
5	Stopper	1	T61000811		42	Handle	1	T61000601	
6	Clutch holder assembly	1	T60031610						
7	Side gear assembly	2	T60031611		50	Motor(with pinion)	1	61001570	
8	Side gear shaft(A)	2	T60031612		51	Hexagon blot	2	T6C440620	BC-6x20(WS)
9	Heat shield	1	T89000497						
10	Liner	1	T89001535		64	Fange	1	30000242	
11	Bearing	2	T6A030627	627ZZ ★					
12	Screw	4	T6C530306	SP-3×6 with WS					
13	Spring pin	1	T6B022012	PR-2×12					
14	Nut	4	T6D010060	NH-6					
15	Washer	4	T6D500060	WF-6					
16	Washer	4	T6D500030	WF-3					
17	Screw	4	T6C520408	SP-4×8					
18	Gear box	1	T60031615						
19	Gear assembly	1	T61000715	With screw					
20	Worm wheel assembly	1	T60031617						
21	Bearing retainer	1	T60031618						
22	Collar(A)	1	T60031619						
23	Bevel gear (B)	1	T60031620						
24	Slide key	1	T60031621						
25	Washer	1	T60031015						
26	Bearing retainer	1	T60031014						
27	Screw	4	T6C520416	SP-4×16					
28	Bearing	1	T6A030627	627ZZ ★					
29	Screw	1	T6C520408	SP-4×8					
30	Bearing	2	T6A030628	628ZZ ★					
31	Spring pin	1	T6B022516	PR-2.5×16					
32	Screw	3	T6C540515	SS-5×15					
33	Side gear bracket	1	T60031675						
34	Side gear shaft(B)	2	T60031613						
35	Spring	1	T60031676						

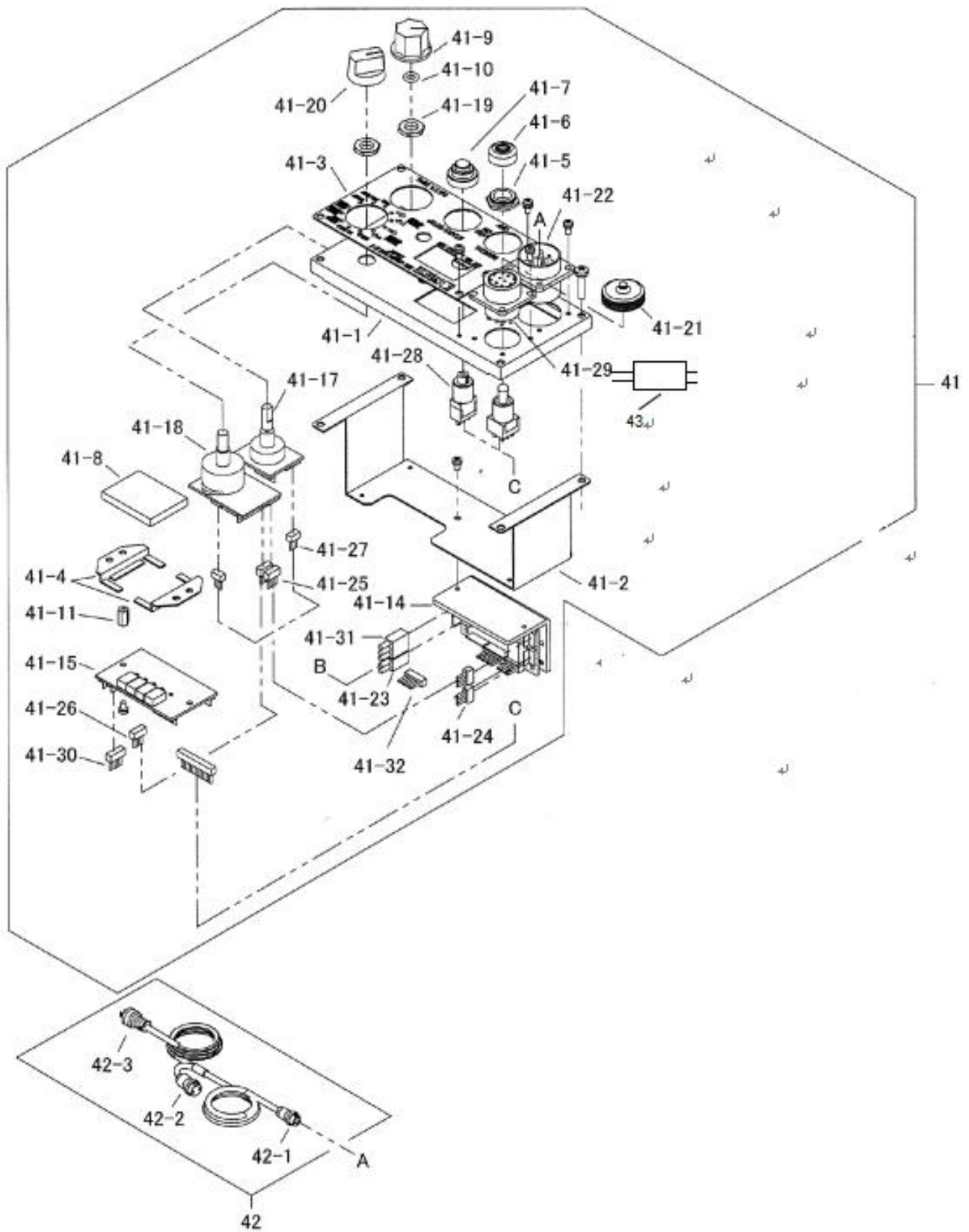
11.2 Torch holder



11.3 Limiting device



11.4 Electrical parts



Electrical parts

ITEM No.	PART NAME	QT	STOCK No.	REMARKS	ITEM No.	PART NAME	QT	STOCK No.	REMARKS
41	Operation panel assembly	1	61007880		41-30	Terminal resistance	1	61006520	DSP-CN5 (5P)
41-1	Panel board	1	61006484		41-31	Extension harness ass' y	1	61006506	Moter line
41-2	Power blacket	1	61006512		41-32	Extension harness ass' y	1	61006507	Encoder
41-3	Name plate	1	61006513		42	Machine connection cable	1	T95D02429	Vietnam
41-4	Glass pressing	2	61006450		42-1	Plug	1	T30001884	Vietnam
41-5	Dust proof nut	1	60032480		42-2	Plug	1	T6N460013	Vietnam
41-6	Water proof cap	1	60032431		42-3	Power plug	1	T95000741	Vietnam
41-7	Water proof cap	1	64000024		43	Filter	1	T95001086	
41-8	Dark gray glass	1	61006298						
41-9	Nob	1	60031249						
41-10	O-ring	1	60036472	P-6					
41-11	Spacer	2	64000497	Hexagon type M3 SP-10					
41-12	Spacer (metal)	1	64000518	Hollow type M3 ER-7					
41-13	Spacer(resin)	1	64000519	Hollow type M3 EP-7					
41-14	L-MD-A circuit board	1	61006243	※1					
41-15	L-DSP-A circuit board	1	61006246	※1					
41-16	Power circuit board	1	64000511	50W					
41-17	L-SW-A(MULTI SWITCH) circuit board	1	61006244						
41-18	L-SW-A(MAIN) circuit board	1	61006245	※1					
41-19	Volume nut	2	6D400001						
41-20	Nob	1	61005744	K-90-S					
41-21	Receptacle cap	1	64000525	NJC-20-Rca 70mm					
41-22	Receptacle assembly	1	61006514						
	Socket	1	T95001733	NCS-256-R (角)					
41-23	Output harness ass' y	1	61006505	CN51~MD-CN1 (4P~2P)					
41-24	Terminal resistance	1	61006519	MD-CN2(4P)					
41-25	Harness ass' y A(4P~4P)	1	61006508	MD-CN3~SW(MAIN)-CN2					
41-26	Harness ass' y B(4P~4P)	1	61006516	DSP-CN2~SW(MAIN)-CN3					
41-27	Harness ass' y C(3P~3P)	1	61006517	SW(MAIN)-CN4~SW(MULTI)-CN4					
41-28	Switch ass' y	1	61006518	DSP-CN9					
	Pushbutton switch	1	60038204	MB2011L/B					
	Toggle switch	1	6N110009	M-2029L/B					
41-29	Receptacle	1	64000523	NJC-2010-RF					